

Little Hartley to Lithgow Upgrade (West section)  
Community Update | October 2022

# Great Western Highway Upgrade Program



Australian Government



NSW  
GOVERNMENT



The updated concept design provides improved connectivity and safer access through separating local traffic and through traffic (visualisation five years after opening, indicative only, final layout to be determined through detailed design)

Together, the Australian Government and the NSW Government have committed more than \$2.5 billion towards the East and West sections of the Great Western Highway Upgrade, between Katoomba and Blackheath, and between Little Hartley and Lithgow, respectively.

Transport for NSW (Transport) will display an updated concept design for the upgrade of the Great Western Highway between the base of Mount Victoria and Coxs River Road, Little Hartley for community feedback until **20 November 2022**.

The updated design provides improved connections to make it easier and safer for drivers to access the upgraded highway, the existing highway and local service roads, including a second overbridge.

Pedestrians and cyclists will also benefit with the shared path to now start at an upgraded Berghofer's Pass carpark and extend to Hartley Historic Village.

Your input is important in helping Transport to design the best upgrade we can between the base of Mount Victoria and Coxs River Road.

We invite you to view the updated concept design, talk to the project team and have your say.

Have  
your  
say

## Updated concept design exhibition

The updated concept design is on exhibition, with your feedback invited, until 20 November 2022.

Further development of the upgrade design between the base of Mount Victoria and Coxs River Road means there have been changes to the concept design that was displayed with the Little Hartley to Lithgow (West Section) Review of Environmental Factors (REF).

During the REF exhibition we received valuable feedback across the whole concept design about how it could be improved and how we could reduce or better manage impacts to the local community.

We would now like to share the updated concept design between the base of Mount Victoria and Coxs River Road and answer any questions you might have.

Sharing the design as we progress will help to provide more certainty about the benefits and potential impacts of the upgrade.

We will use your feedback gathered during the display period to help inform the detailed design for this section.

We welcome your comments at any time and will continue to share how your input is helping us to create a better upgrade for everyone.

### What is a concept design?

The concept design is developed in sufficient detail to allow an assessment of likely environmental, social and economic impacts so stakeholders can provide feedback. The concept design may be further refined based on feedback received. Transport will be encouraging innovation from tenderers to develop a detailed design that provides the best overall outcomes.

## How we've improved the design

We have used your feedback and further investigations to update the concept design between the base of Mount Victoria and Coxs River Road, resulting in:

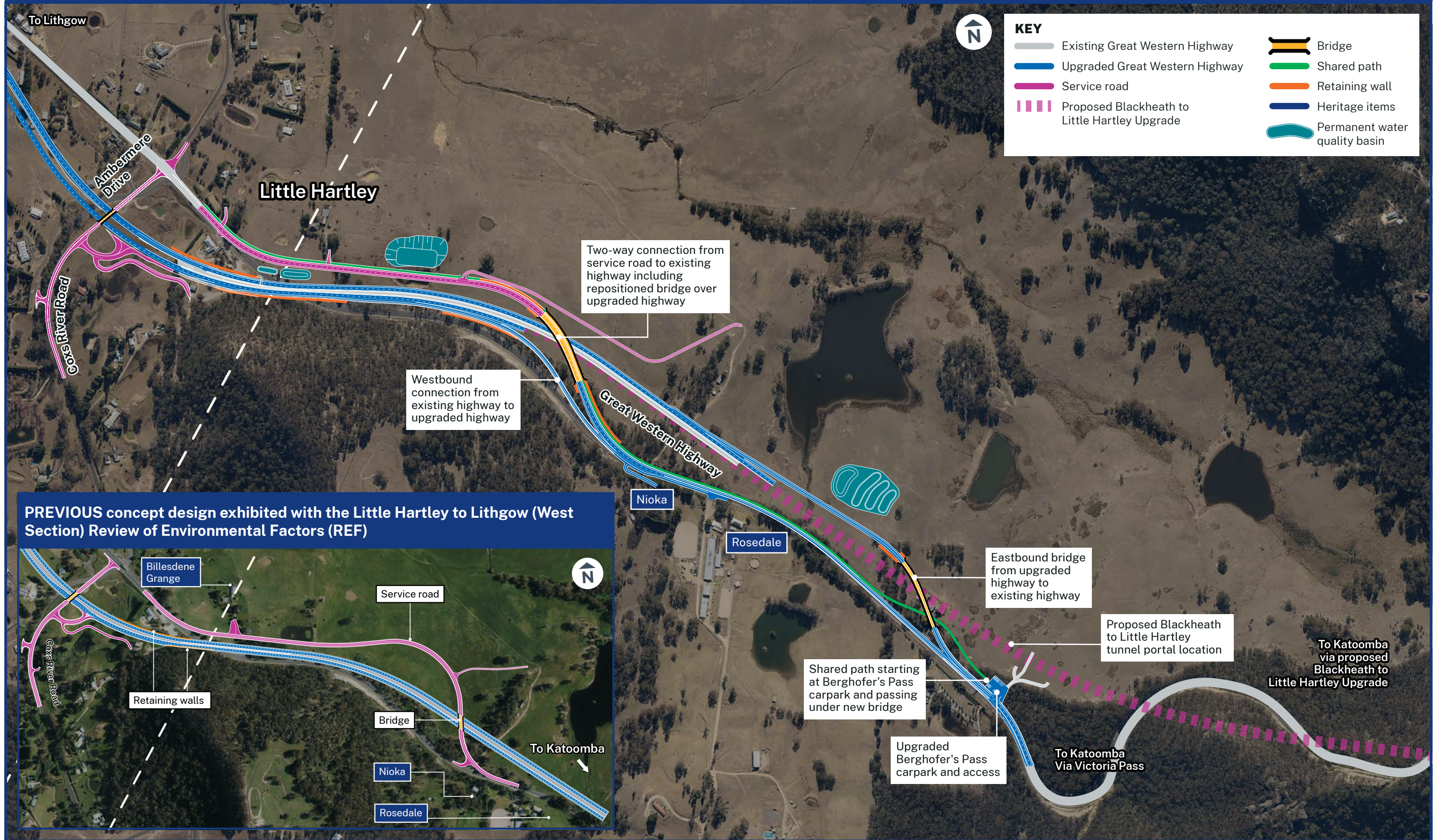
- Improved connectivity and safer access between the upgraded highway and the existing highway via a new eastbound bridge and new westbound connection, so through traffic won't need to access the local service roads
- A more direct two-way connection from the new service road at Little Hartley to the existing highway, so locals travelling to Mount Victoria won't have to access the upgraded highway
- Repositioning of the service road bridge displayed in the REF concept design by around 150m further west, which lessens the requirement for earthworks and allows reduced environmental impacts
- An upgrade of the Berghofer's Pass carpark to provide a formal sealed parking area and safer access from the existing highway
- Extension of the shared path so it begins from Berghofer's Pass carpark
- Additional permanent water quality control basins to maintain or improve current water quality
- Improved access for emergency services vehicles through more direct connections
- Opportunities for better construction staging to reduce potential traffic impacts if connecting to the proposed Blackheath to Little Hartley tunnel.



The existing Coxs River Road intersection, looking to the east towards Mount Victoria



**UPDATED** concept design between the base of Mount Victoria and Coxs River Road, Little Hartley



**PREVIOUS** concept design exhibited with the Little Hartley to Lithgow (West Section) Review of Environmental Factors (REF)



Concept design indicative only, final layout to be determined through detailed design.



## What happens next?

As there have been changes to the concept design that was displayed with the Little Hartley to Lithgow (West Section) REF, Transport is preparing an Addendum REF for this section.

An Addendum REF describes any modifications proposed to the original concept design, assesses the likely impacts of the proposed modifications on the environment, and details mitigation and management measures to be implemented.

As part of the development of the Addendum REF, the design is being placed on public display to seek comment on the proposed changes.

As we finalise the Addendum REF, we will also consult closely with any stakeholders who are identified as potentially experiencing changed impacts as a result of the updated design.

Feedback from the updated concept design exhibition and Addendum REF stakeholder consultation will help inform the detailed design for the upgrade of the Great Western Highway between the base of Mount Victoria and Coxs River Road.

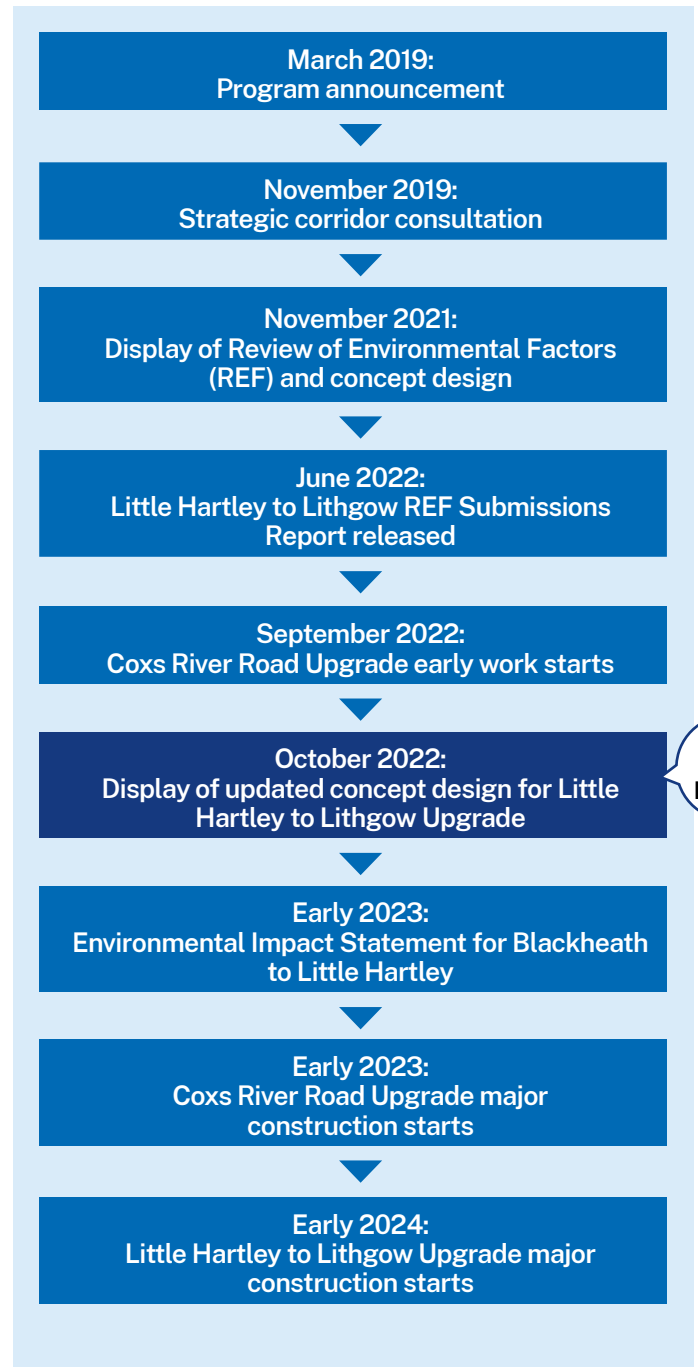
Your feedback provided during the display of the updated concept design will be addressed as part of the Addendum REF process, and responses will be provided in a Community Consultation Report.

The visualisation of the updated concept design we have provided in this Community Update is an early representation of the road design between the base of Mount Victoria and Coxs River Road, for the purposes of updating the community on the design progression.

**The visualisation does not include a full rendering of the urban design or landscaping that will be delivered as part of the project.**

More comprehensive visualisations will be provided as part of the Environmental Impact Statement, on display early in 2023.

## Program update



The Katoomba to Lithgow duplication will provide major economic and safety benefits. It will improve the connection between Central West NSW and Sydney, reduce congestion, improve resilience and freight productivity, and provide a safer and more reliable journey for thousands of residents, commuters, tourists and freight operators who travel in, around and through the Blue Mountains.

## Great Western Highway Upgrade Program

### View the updated concept design

You can view the updated concept design at:

- Our virtual consultation room at [nswroads.work/gwhwestconsult](https://nswroads.work/gwhwestconsult)
- Lithgow City Council Administration Centre
- Lithgow Library Learning Centre
- Hartley Fresh & Cafe

### Speak to the project team

We will hold an online and a face-to-face information session.

#### Online information session

Thursday 3 November 6.00pm–7.30pm

#### Face-to-face information session

Wednesday 9 November 6.00pm–7.30pm

Hartley Community Hall, Corner Great Western Highway and Mid Hartley Road, Hartley

Register for an information session at [nswroads.work/gwhwestconsult](https://nswroads.work/gwhwestconsult)

We ask that you book for the face-to-face session, to help us manage social distancing. QR code sign in will be required.

### Have your say

You can provide feedback

- Online at [nswroads.work/gwhwestconsult](https://nswroads.work/gwhwestconsult)
- By email to [gwhd@transport.nsw.gov.au](mailto:gwhd@transport.nsw.gov.au)
- By mail to Great Western Highway Upgrade Program, PO Box 334, Parkes NSW 2870.

Or you can contact us on 1800 953 777 or [gwhd@transport.nsw.gov.au](mailto:gwhd@transport.nsw.gov.au) to book a personal phone consultation.

### Contact us

Please reach out to us at any time with your questions or suggestions about the Great Western Highway Upgrade Program.



[nswroads.work/gwh](https://nswroads.work/gwh)



[gwhd@transport.nsw.gov.au](mailto:gwhd@transport.nsw.gov.au)



1800 953 777



Great Western Highway Upgrade Program  
PO Box 334, Parkes NSW 2870



If you need help understanding this information, please contact the Translating and Interpreting Service on **131 450** and ask them to call us on **1800 953 777**.



Artist's representation of new eastbound bridge five years after opening, viewed from existing Great Western Highway approximately 1.6 kilometres east of Coxs River Road, looking east (indicative only, final layout to be determined through detailed design)

October 2022  
22.251

Privacy Transport for NSW ("TfNSW") is subject to the Privacy and Personal Information Protection Act 1998 ("PPIP Act") which requires that we comply with the Information Privacy Principles set out in the PPIP Act. All information in correspondence is collected for the sole purpose of assisting in the delivery of this project. The information received, including names and addresses of respondents, may be published in subsequent documents unless a clear indication is given in the correspondence that all or part of that information is not to be published. Otherwise TfNSW will only disclose your personal information, without your consent, if authorised by the law. Your personal information will be held by TfNSW at 51-55 Currajong Street Parkes NSW 2870. You have the right to access and correct the information if you believe that it is incorrect.