

# Vegetation removal and nightworks at Little Hartley from 29 May 2023

## Coxs River Road Upgrade

May 2023



Australian Government



Transport for NSW acknowledges the Wiradjuri Nation peoples as the Traditional Custodians of the lands on which we work and pays respects to Elders past and present.

The Coxs River Road upgrade of the Great Western Highway will reduce congestion and improve safety and accessibility for all local and highway road users, commuters and pedestrians.

Contractors for Transport for NSW (Transport) will be carrying out vegetation removal at Little Hartley for the Coxs River Road upgrade. To facilitate this work, the contractor will also install barriers and fences along the Great Western Highway and Coxs River Road.

### What work are we doing?

Vegetation removal will take place during daylight hours and will include:

- Removing vegetation
- Grubbing
- Clearing of vegetation
- General earthworks.

We will also be working at night to install barriers and fences along the Great Western Highway and Coxs River Road.

### When and where we'll be working

We'll be working from **29 May up to 30 June 2023**, weather permitting.

Working hours are **7am to 6pm, Monday to Friday and 8am to 1pm, Saturday.**

Nightworks will occur from **12 June to 17 June**, weather permitting.

Working hours for nightworks are **6pm to 7am, Monday to Friday.**

### What will this mean for you?

Most of this work will have minimal impact on residents. However, you will notice:

- Temporary traffic changes
- Traffic control in place during night work with a reduced speed limit of 40km/h on the Great Western Highway and Coxs River Road with intermittent traffic stops
- Noise from machinery and equipment.
- Please allow an additional approx. 10 minutes to your travel time.

### Managing our impacts

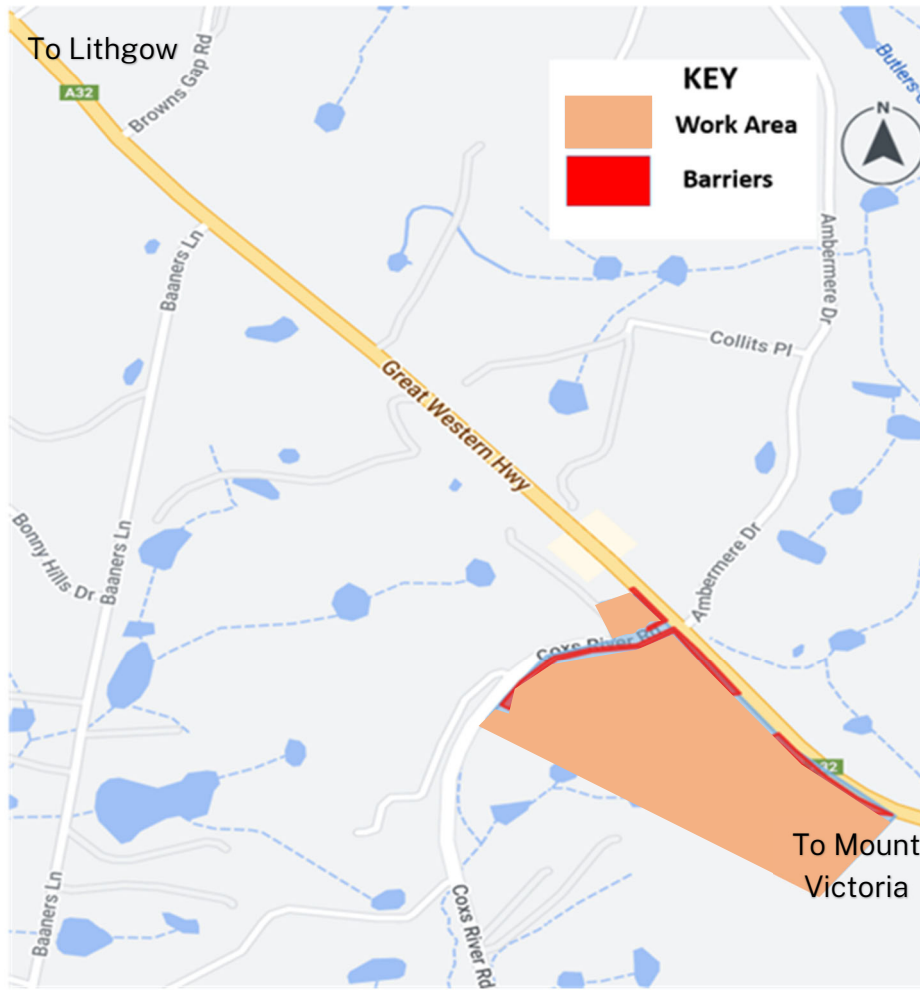
We aim to manage our work to avoid impacts to the community and the environment.

This includes:

- Fencing for safety and security
- Reducing our noise as much as possible
- Working in stages and turning off machinery when not in use
- Targeted lighting during night works to minimise light spill.



## Location of work area



## Traffic changes

A reduced speed limit of 40 km and traffic control will be in place.

All road users are advised to follow the directions of signs and traffic control and slow down on approach.

We understand that this work may generate some inconvenience and we thank you for your patience.

For the latest traffic updates, call 132 701, visit [livetraffic.com](http://livetraffic.com) or download the Live Traffic NSW App.

## Contact us



Project Infoline **1800 953 777**



**[gwhcrr@ertech.com.au](mailto:gwhcrr@ertech.com.au)**



51-55 Currajong Street  
Parkes, NSW 2870

For more information on our projects,  
visit [nswroads.work/gwh](http://nswroads.work/gwh)



Scan the QR code to visit our project  
website.



## Interpreter service

For languages other than English call 131 450  
Arabic • Cantonese • Hindi • Mandarin • Vietnamese

لطلب خدمة الترجمة الشفهية للغات غير الإنجليزية اتصل بالرقم  
**131 450**

獲取英語以外的其他語言傳譯協助服務可以致電**131 450**  
अंग्रेज़ी के अतिरिक्त अन्य भाषाओं के लिए दुभाषिया सेवा **131 450**  
पर कॉल करें

获取英语以外的其他语言口译协助服务可以致电**131 450**

Để có dịch vụ thông ngôn cho các ngôn ngữ khác tiếng Anh,  
gọi số **131 450**