

Sydney Harbour Bridge Cycleway Northern Access Project

Review of Environmental Factors determination and Submissions Report released



August 2023

Transport for New South Wales (Transport) is progressing with plans to upgrade the existing cycleway connection between the Sydney Harbour Bridge cycleway and the bike network in Milsons Point.



Artist's impression of Sydney Harbour Bridge Cycleway

The project consists of an elevated bike ramp from Bradfield Park to Sydney Harbour Bridge Cycleway.

The ramp will connect to a new cycle path along Alfred Street South (between Middlemiss and Burton Street) and include a new street crossing on Alfred Street South.

The two-way cycle path will be shared by pedestrians and cyclists and connect to the existing bike network in Milsons Point.

The project has now been determined to proceed following review of submissions made during the Review of Environmental Factors (REF) display period in November and December 2022.

Construction is anticipated to commence in early 2024.



Pop up stall at Kiribilli Markets during REF display

Review of Environmental Factors (REF)

Transport prepared a REF to assess potential environmental impacts of the proposed project.

Community information sessions were held by Transport and subject matter experts throughout December 2022 to provide further information, answer questions and encourage the community to provide submissions on the REF. Locations included Kirribilli Markets and Burton Street cycleway.

Local businesses were contacted and encouraged to provide feedback about the proposed plans and potential impacts during construction.

The REF was on display between 28 November and 19 December 2022. Community and stakeholders were able to make submissions via online, email or phone.

Public display of the REF resulted in 1,042 submissions—two from government agencies, five from community groups and 1,035 from the community.

What we heard

The main issues raised were:

- The need for the cycleway and its design
- The level of consideration given to alternative options to a linear ramp, including lifts and a looped ramp design over Bradfield Park South
- Business impacts, particularly impacts to parking along Alfred Street South
- Heritage impacts to the Sydney Harbour Bridge and Milsons Point Station
- Changes to traffic flow along Alfred Street South due to the shared cycle path
- Proposed tree removal and replacement planting

Transport values feedback received from the community and stakeholders and has incorporated refinements to address concerns.

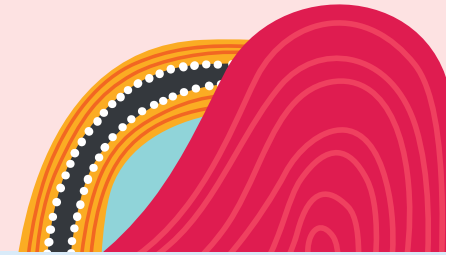
Design changes

Following exhibition of the REF, the project has been refined in response to stakeholder feedback and further progression of the design, particularly to minimise impacts to the Sydney Harbour Bridge and to reduce conflict between pedestrians and cyclists.

Transport has updated the design based on your feedback, including:

- Refinements to the size and position of ramp to minimise visual impacts of the Sydney Harbour Bridge
- Reduction in ramp length of approximately three metres
- Retaining and resurfacing the existing Lavender Street roundabout and introducing a shared path between Lavender Street and Middlemiss Street
- Removing the proposed in-lane bus stop on Alfred Street South near Lavender Street and replacing it with a kerb-side bus stop
- Additional lighting to enhance safety
- Amend path route to slow down bike riders exiting the ramp at Bradfield Park to minimise conflict between pedestrians and cyclists.
- Additional bike rider wayfinding signage at key bike rider journey points
- An updated assessment of direct and indirect impacts to listed heritage items due to detailed design refinements.

Throughout the design process Transport for NSW has met with Aboriginal knowledge holders to listen to their stories and incorporated their feedback into the design. These stories, as well as ongoing guidance from Aboriginal design experts, has informed the development of a large-scale Aboriginal artwork on the ramp deck. This important engagement process with elders will continue until the design is finalised and a suitable Aboriginal name is selected for the ramp.



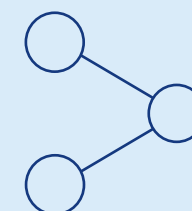
Artist's impression of view of Milsons Point Station as seen from Alfred Street South

The Heritage NSW S60 Application was on display April 2023 and approved with conditions on 7 June 2023.

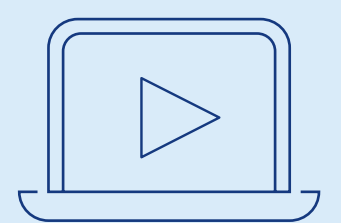
Consultation fast facts



Community update and reminder postcard to make a submission
28,346

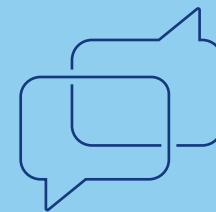


Social media reach
34,838

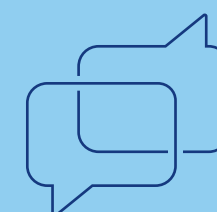


Visits to the engagement portal
3,206

Community pop ups



Kirribilli Markets
4 and 11 Dec 2022
72 interactions



Greenway Apartments
15 Dec 2022
7 interactions



Harbour Bridge cycleway stairs
6 and 7 Dec 2022
45 interactions



Thank you

Thank you to everyone who took the time to respond and make submissions during the REF consultation.

Following consultation on the REF, Transport for NSW has prepared a Submissions Report. We have reviewed and considered every submission, and the report details our response, including key changes made to the project as a result of your feedback. It also provides answers to the questions you asked us, and an update on the outcomes of additional investigations conducted in the past months.

The Submissions Report is now available on the project website at nswroads.work/cycleway



Feasibility studies and consultation about linear and looped ramp options

Linear ramp concept selected

Competitive design process, Design Jury and public consultation

Stakeholder consultation

Winning design team progresses concept design

Environmental planning and heritage assessments prepared for public consultation

Geotechnical investigation work starts

Public display of REF

We are
HERE

Submissions Report published and REF determined

Detailed design continues

Cycleway delivery contractor awarded

Cycleway construction starts

Cycleway open to the public, and construction compound and other impacted areas restored

Next steps

The construction of the Sydney Harbour Bridge ramp and Alfred Street South cycle path is anticipated to commence in early 2024. Site investigations will soon be conducted in Bradfield Park North and the surrounding area to inform the detailed design ahead of major construction starting. Throughout 2023, the project team have worked on the detailed design with some elements of the approved design remaining subject to further investigations and development.

Transport will continue to consult with the community and stakeholders prior to and during the construction phase.

Get in touch

If you have any questions or would like more information please contact our project team:



1800 581 595



sydneyharbourbridgeprojects@transport.nsw.gov.au



nswroads.work/cycleway



Translating and interpreting service

If you need help understanding this information, please contact the Translating and Interpreting Service on **131 450** and ask them to call us on **1800 581 595**.

www.transport.nsw.gov.au/privacy-statement#Your_Privacy