



# Commuter Car Park Program

## Emu Plains

### Community Notification | February 2023

#### Project overview

Transport for NSW is constructing a new commuter car park at Emu Plains Station to provide the community with more convenient access to public transport and reduce congestion on our roads. The project is jointly funded by the Australian and NSW Governments. The car park, which will be accessed via a new roundabout at the intersection of Old Bathurst Road and Smith Street, will provide approximately 750 additional commuter parking spaces.

As part of this project, a new 220-metre footpath with lighting and fencing will be built between the new commuter car park and the Great Western Highway. This will provide an improved pedestrian connection between the Nepean Creative and Performing Arts High School and the railway station, without the need for students to cross the road at the intersection of Old Bathurst Road and the Great Western Highway.

#### Progress update and upcoming work

Work to enable the construction of the new roundabout at the intersection of Old Bathurst Road and Smith Street is progressing well.

The following work is planned to occur in February:

- staged construction of the roundabout on Old Bathurst Road
- work on water mains on Old Bathurst Road requiring temporary road closures (details below)
- construction of new footpaths including some vegetation removal and management.

Minor traffic flow changes will be made as required, and traffic controllers and signage will be in place for the safety of motorists and workers. Some short periods of daytime contra-flow (one lane at a time under traffic control) may be necessary. Please observe signage and the directions of traffic controllers.

#### Night work in January and February

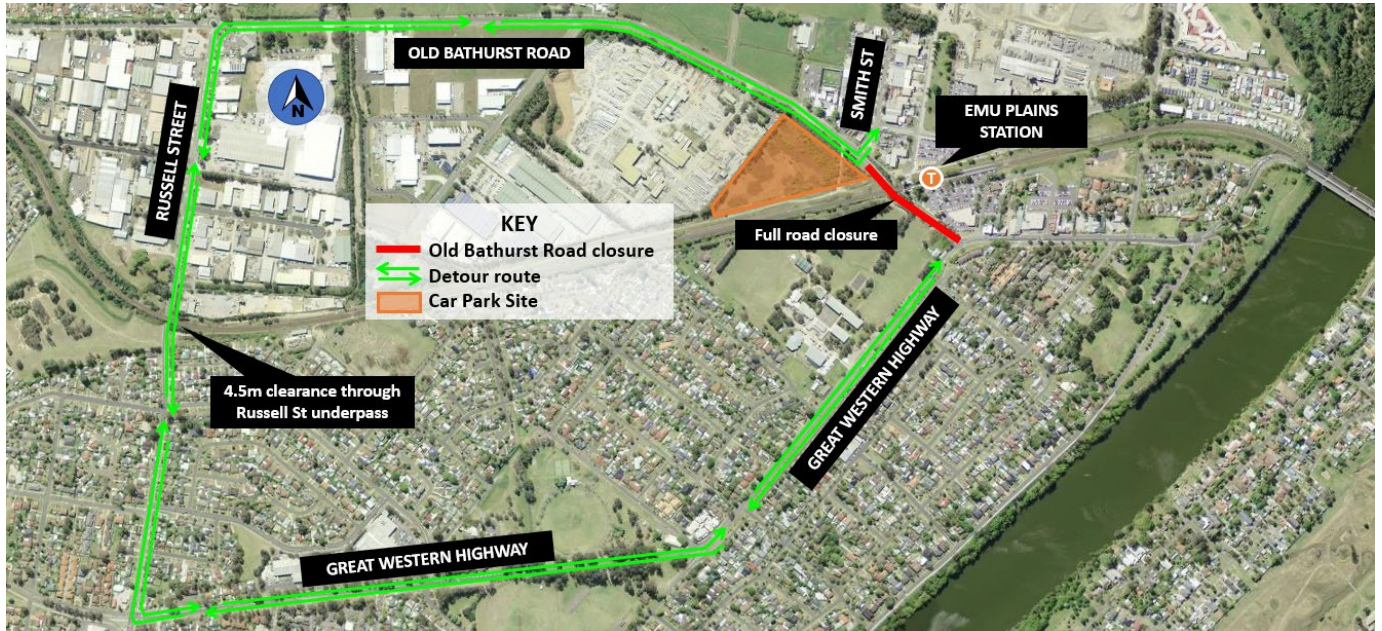
Subject to approval, a section of **Old Bathurst Road between Great Western Highway and Smith Street will be closed for night work between 9pm and 5am Monday night to Thursday night for up to three weeks starting from Monday 30 January 2023**. This is to allow relocation of a large water main from under the roundabout. Vegetation removal and construction of the roundabout will also proceed. The map on the next page shows the detour route for access to/from Smith Street.

Workers will be on site from 6pm each night. Traffic control will be in place. Construction equipment will include lighting towers, excavator, bobcat, mobile crane, tip truck, concrete mixer, chainsaw, service and delivery vehicles, compactor, and hand tools.

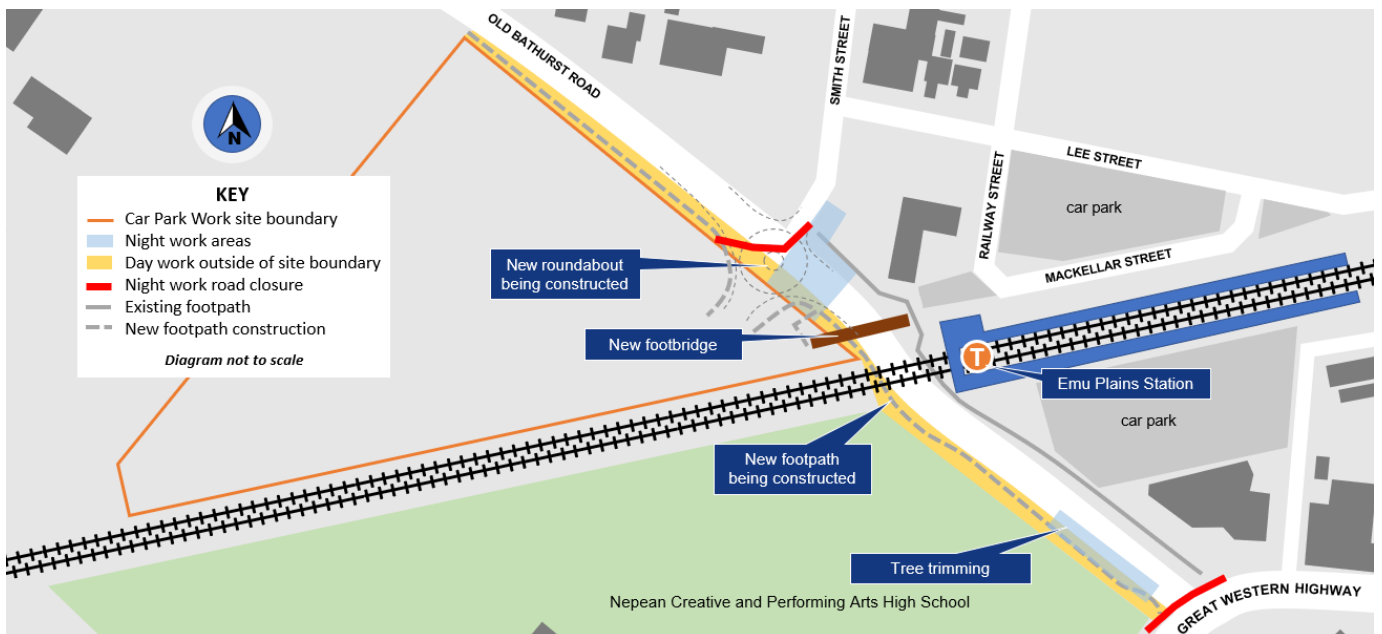
#### Keeping you up to date

More information is available on our website [transport.nsw.gov.au/emuplains](https://transport.nsw.gov.au/emuplains). If you would like to sign up to our project distribution list, please contact us on 1800 684 490 or email [projects@transport.nsw.gov.au](mailto:projects@transport.nsw.gov.au) and we will email you regular updates. For all urgent enquiries or complaints regarding construction activities, please call our 24-hour Construction Response Line on 1800 775 465.

## Map of detour route during night time road closure of Old Bathurst Road from 30 January



## Map of work areas in late January and February 2023



## Construction hours

Apart from planned night work, standard construction hours are 7am to 6pm Monday to Friday and 8am to 1pm Saturdays. All work is dependent on weather and site conditions, and may be varied without additional notice.



Translating and interpreting service

If you need help understanding this information, please contact the Translating and Interpreting Service on 131 450 and ask them to call us on 1800 684 490.