

# Off-site investigation work at the Goulburn Railway Precinct

## Goulburn Wheat Yards Land Management Project

June 2023



Transport for NSW acknowledges the Traditional Custodians of the lands on which we work and pay our respects to Elders past, present, and emerging.

We are focused on managing contaminated land along rail lines in regional NSW to ensure health and safety of our communities.

Transport for NSW (**Transport**) and the Australian Rail Track Corporation (**ARTC**) will carry out off-site investigations in June 2023 as a part of our ongoing investigations into the contamination identified within the Goulburn Wheat Yards Sidings (**Site**).

### What work are we doing?

The scope of this important work will include an x-ray fluorescence (**XRF**) survey using a field portable XRF spectrometer and collecting of soil samples to be sent for laboratory analysis.

An XRF spectrometer is an instrument used for routine, non-destructive chemical analyses of soils, rocks, minerals, sediments and fluids.

### When and where we'll be working

We'll be carrying out this work from **Monday, 19 June to Friday, 23 June 2023** during standard business hours.

The work will take place within the road verges and land extending down Sloane Street, Ottiwell Street, Lansdowne Street, Dossie Street, Finlay Road, King Street and Cooma Avenue (if required). A map of the work area is available on the next page.

### Why are we doing this work

Transport and ARTC have identified elevated levels of lead, asbestos containing materials and other contamination in soils at this Site as a result of historical industrial activities associated with use of the Goulburn railway precinct.

As such we are continuing their investigations to assess the extent of the contamination and determine whether the lead has migrated offsite.

The upcoming investigation will help us understand if additional investigations and/or safety measures are required to manage the Site.

### What will this work mean for you?

You may notice workers and vehicles within the work area conducting the investigation.

The work however is not expected to result in any disruption to the community.

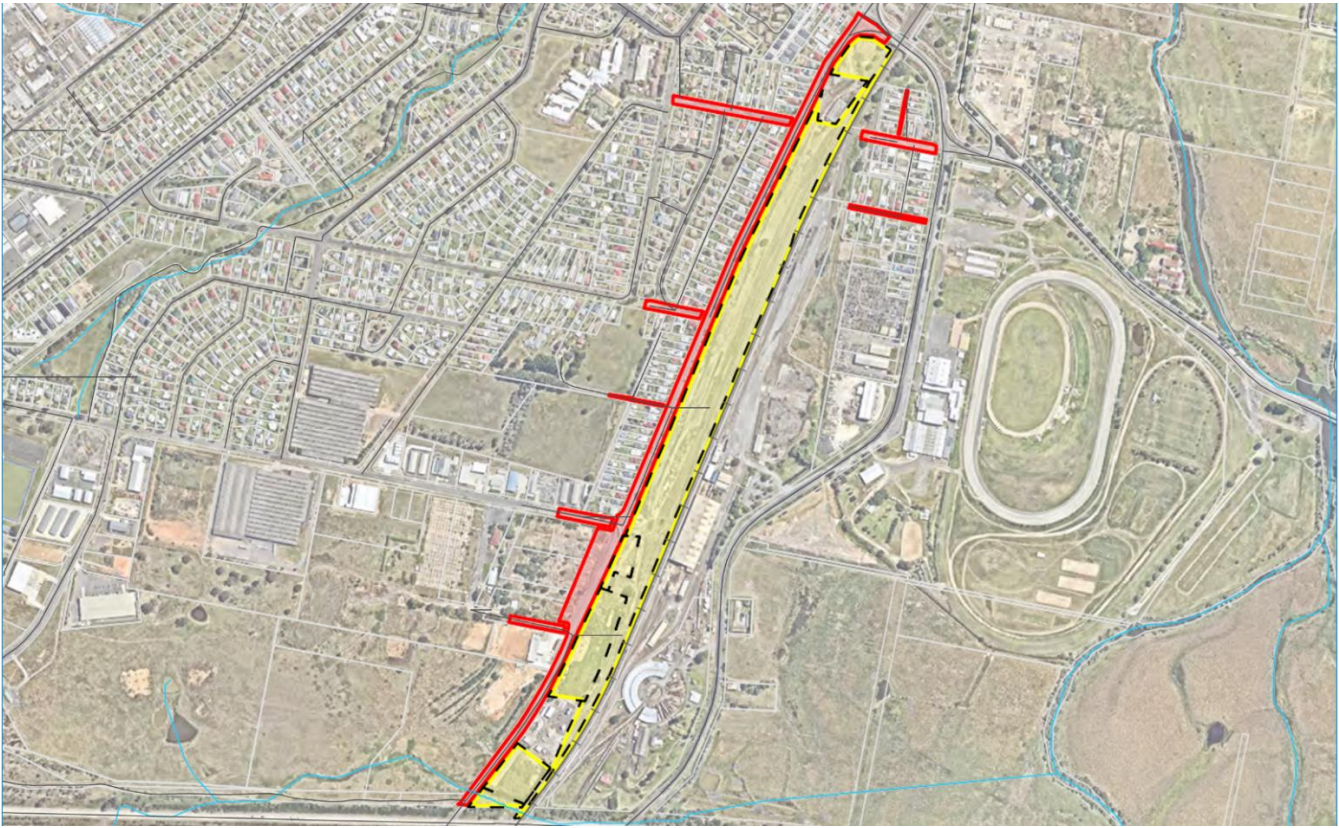
### Meet the project team

Transport staff will be in Goulburn on **Monday, 19 June 2023** from **13.00** to **17.00** and **Tuesday, 20 June 2023** from **09.00** to **12.00** to answer questions from the community.

If you would like to meet one of our friendly staff and find out more about this project, the team will be located on the corner of **Sloane Street and Finlay Road** during the dates and times mentioned above.



## Location of work area



## Next steps

Once the investigation is completed and result finalised, we will share the report on this work with the community via our website at <https://www.transport.nsw.gov.au/projects/current-projects/goulburn-rail-corridor-contamination>

We will keep the community updated on the progress of our work. If you would like to register for alerts and updates on this Site, please email [landassessment@transport.nsw.gov.au](mailto:landassessment@transport.nsw.gov.au)

## Further information

For more information about lead exposure, please see advice on the NSW Health website at <https://www.health.nsw.gov.au/environment/factsheets/Pages/lead-exposure-children.aspx>

For more information about managing lead in the environment see the EPA website at <https://www.epa.nsw.gov.au/your-environment/household-building-and-renovation/lead-safety>

## Contact us



Project Infoline **1800 491 566**



[landassessment@transport.nsw.gov.au](mailto:landassessment@transport.nsw.gov.au)



[transport.nsw.gov.au/projects/current-projects/goulburn-rail-corridor-contamination](https://www.transport.nsw.gov.au/projects/current-projects/goulburn-rail-corridor-contamination)



18 Lee Street, Chippendale NSW 2008  
PO Box K659, Haymarket NSW 1240



### Interpreter service

For languages other than English call 131 450  
Arabic • Cantonese • Hindi • Mandarin • Vietnamese  
لطلب خدمة الترجمة الشفهية للغات غير الإنجليزية اتصل بالرقم  
**131 450**

獲取英語以外的其他語言傳譯協助服務可以致電**131 450**  
अंग्रेज़ी के अतिरिक्त अन्य भाषाओं के लिए दुभाषिया सेवा **131 450**  
पर कॉल करें

獲取英語以外的其他語言口譯協助服務可以致電**131 450**  
Để có dịch vụ thông ngôn cho các ngôn ngữ khác tiếng Anh,  
gọi số **131 450**