

Transport for NSW

Goulburn Railway Precinct

Information session

13 December 2022

transport.nsw.gov.au



OFFICIAL



Acknowledgement of Country

I acknowledge and pay my respects to the Traditional Custodians of the lands on which we meet, especially Elders, past and present and acknowledge other Aboriginal people here and their respective cultures and nations.

Introductions

Tom Grosskopf, Executive Director, Network & Assets

Melanie Stewart, Director, Strategic and Statewide Engagement

Jo McLoughlin, Project Manager, Land Management

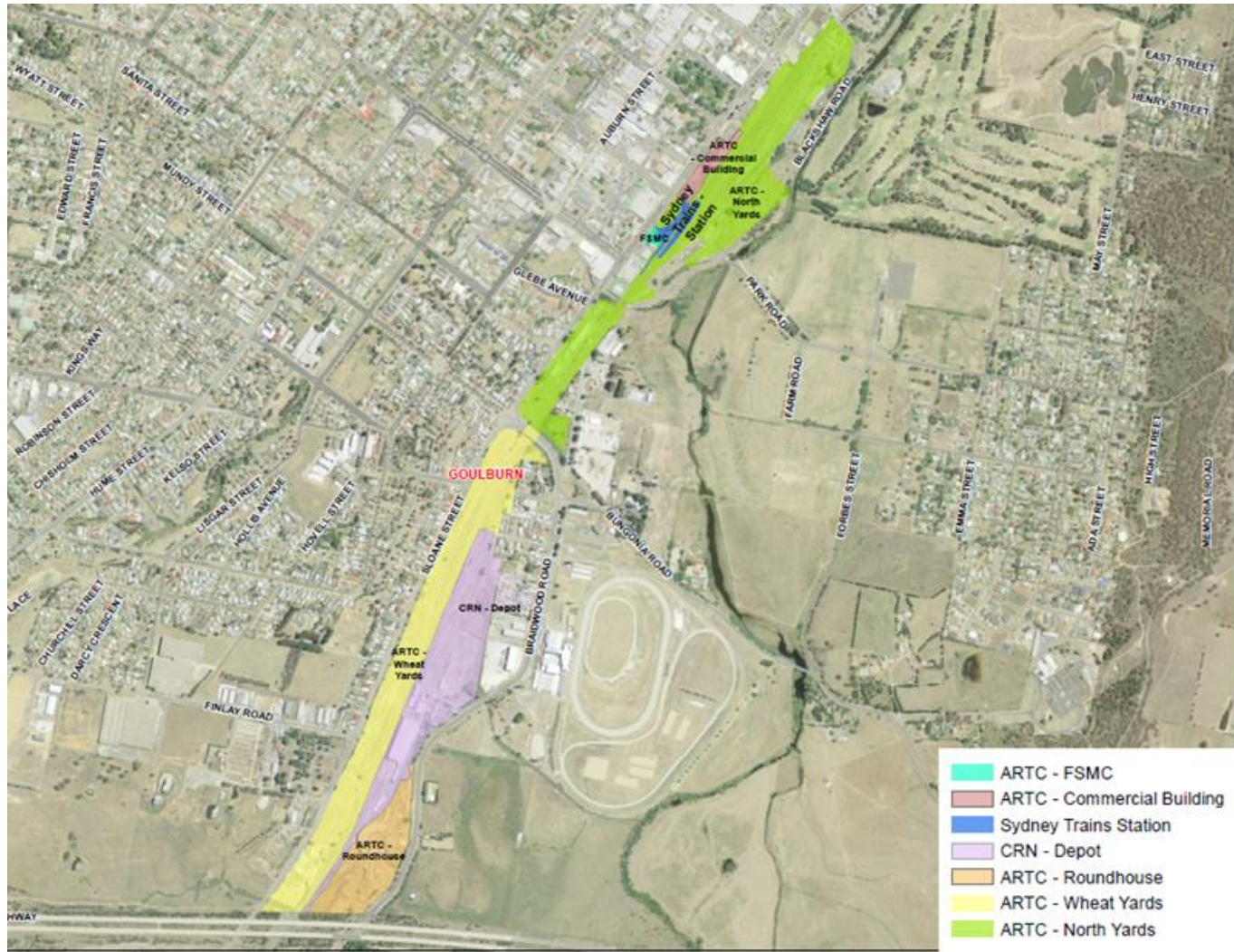
Lisa Cahill, Community Engagement Manager

Martin Cocca, Senior Manager Transport Technical Solution, South

Agenda

- Site background
- Investigation and Remediation Timeframe
- Testing Wheat Yards
- Detailed Site Investigation
- Notification and Information
- Role of the Site Auditor
- Areas outside of the rail corridor
- Next steps
- Questions
- Keeping the community safe and informed

Background



- Goulburn Railway Precinct is one of the oldest major railway centres in NSW, and has been operating since the 1860's
- The precinct consists of:
 - Operational railway yard and sidings
 - Operational maintenance facilities
 - Commercial businesses
 - Museum
 - Residential property
 - Railway Station

Investigation and Remediation Timeframe

Project Timeline



NSW EPA Engagement

Community Engagement



Testing Wheat Yards

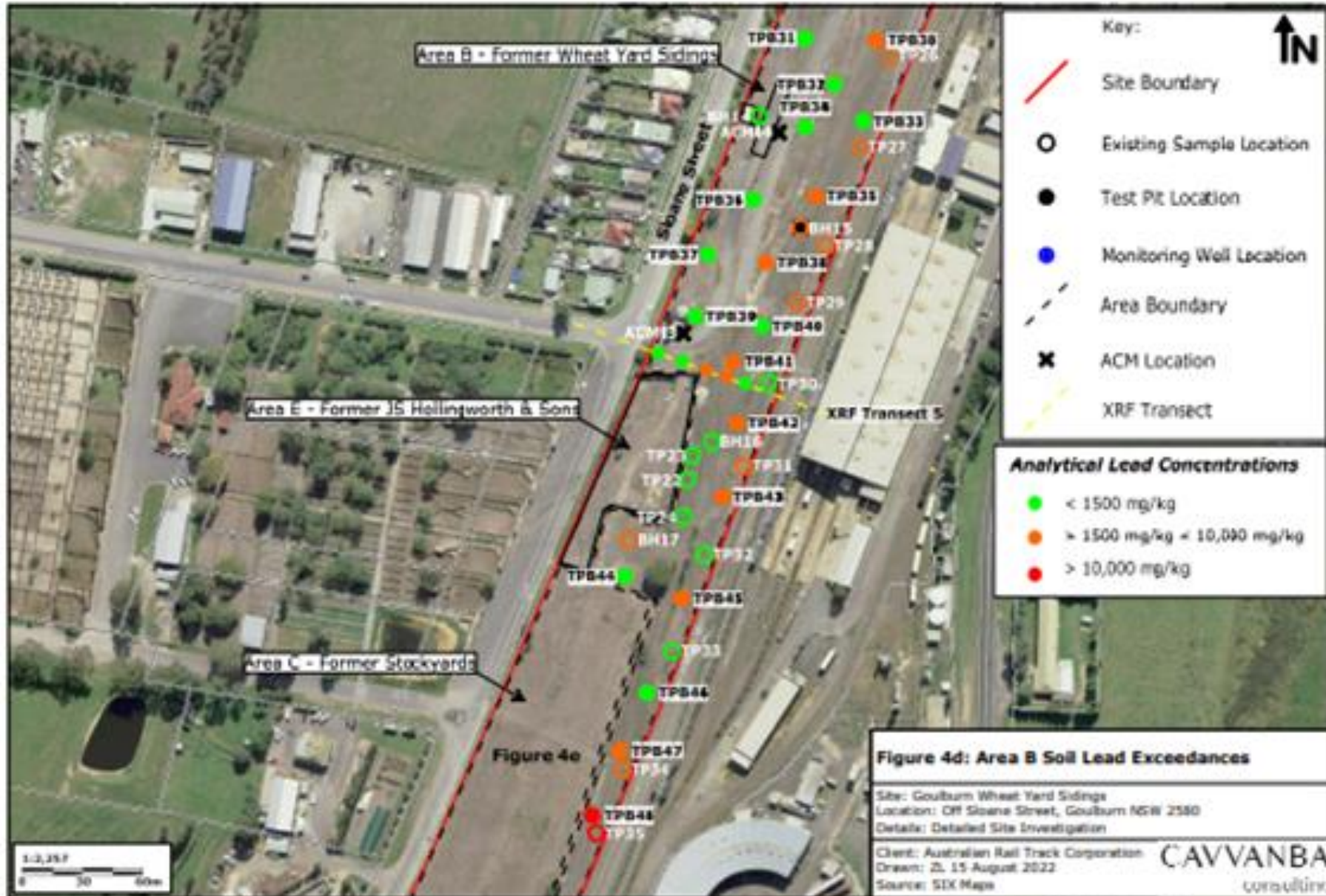
A Detail Site Investigation (DSI) was completed in October 2022.

The testing was undertaken across the whole area and included 73 test pits and 12 boreholes across the site

The investigation indicates that there are elevated levels of lead in the area. Some of these exceed the commercial / industrial land use criteria

To keep the site safe we have a plan in place to manage the contaminated area and ARTC has controls in place during any critical work required at the site

Detailed Site Investigation - Wheat Yards



Notifications & Information

- Part of the investigation and remediation process is to report findings to the NSW Environmental Protection Authority (EPA) where there is a statutory requirement.
- We reported the contamination to the EPA
 - October 2021 – Wheat Yards
 - June 2021 - Roundhouse
- We will update the community through email, web updates and community information sessions

Role of the Site Auditor

- TfNSW has elected to appoint an NSW EPA accredited Site Auditor
- The Auditor is engaged to ensure the methods and interpretation of data are consistent with the requirements of the NSW EPA.
- The Site Auditor has recommended further specific assessment is conducted.



Areas outside of the rail corridor

- We need to understand if contamination has moved off site
- We will work with landowners and Council to undertake testing
- Testing involves soil sampling, air monitoring and water sampling
- We will keep the community informed in the new year before and after testing



Information about lead

- For more information about lead exposure, please see the [NSW Health website](#).

- For more information about managing lead in the environment see the [EPA website](#).

NSW Health

Our role is to assist in the identification, prevention and minimisation of public health risks within the community

Specifically, NSW Health provides advice on potential public health risks in response to the presence of lead in the environment, particularly in children

Blood lead levels exceeding 5 micrograms per decilitre are notified to NSW Health. Investigation can take place to identify the source of the lead, any broader risks that exist to the community, and to assist GPs in medical management of cases where required

Elevated blood lead levels reported in the Goulburn community are generally related to occupational exposure



Drinking Water

NSW Health provides guidance on the provisions of public and private drinking water supplies to ensure they comply with the Australian Drinking Water Guidelines (ADWG), and that risks to the public are managed where there is a non-compliance

Goulburn Mulwaree Council carries out verification water quality monitoring required by the NSW Health Drinking Water Monitoring Program, which requires the weekly collection of samples for microbial analysis and monthly sampling for chemical and physical analysis.

Dating back to 2000, there have only been two (2) minor elevated levels of lead detected in the Goulburn water supply under the NSW Health Drinking Water Monitoring Program (2005/2006). These were likely as a result of a sampling error.

NSW recommends that groundwater is not used for drinking (potable) purposes unless it is treated and monitored for compliance with ADWG



How likely is it that I or someone in my family has been exposed to lead?

The likelihood that a person has been exposed to lead is dependent on several factors including the level of lead in the immediate environment and activities that could increase exposure, the length of exposure and the person's age and general health.

How can I be tested?

If you are concerned about possible exposure to high levels of lead, please see your local GP to request a blood test. You can request this test to be bulk billed.

Additional Information

Contact: Tabitha Holliday, Environmental Health Officer

Phone: 1300 066 055

Email: MLHD-EH-PHU@health.nsw.gov.au



Next steps

2023

Community and Council engagement prior to offsite (investigations along Sloane street) surveys
Offsite surveys
Air monitoring
Surface water monitoring
Ground water monitoring
Additional onsite soil investigations
Community and Council engagement
Negotiate and enter into VMP with NSW EPA

2024

Remediation Options Assessment and preferred remediation option identified
Community engagement
Develop detailed design and engineering
Prepare review of environmental factors
Prepare statement of heritage impact
Statutory approvals
Community engagement
Planning for the implementation of the remediation action plan

2025- 2026

Community engagement throughout the process
Contractor Engagement
Remediation
Site Validation
Site Audit Statement & Reporting

Questions?



Keeping the community safe and informed



Our primary focus is to ensure the safety of the community.



The reports submitted to the NSW EPA are in the Reports section of our website transport.nsw.gov.au



We will continue to keep the community informed using a range of tools including our website, emails, community information sessions.



We can be contacted via email landassessment@transport.nsw.gov.au or 1800 491 566