

# Transport access program

## Grafton Train Station upgrade

### Project update February 2023

#### The NSW Government is improving accessibility at Grafton Train Station

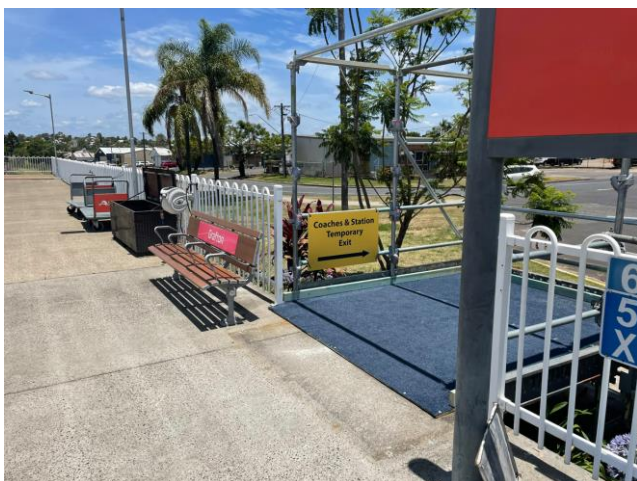
Transport for NSW is upgrading the Grafton train station as part of the transport access program. The upgrade will provide a station that is accessible to those with a disability or limited mobility, parents/carers with prams and customers with luggage.

#### Completed work

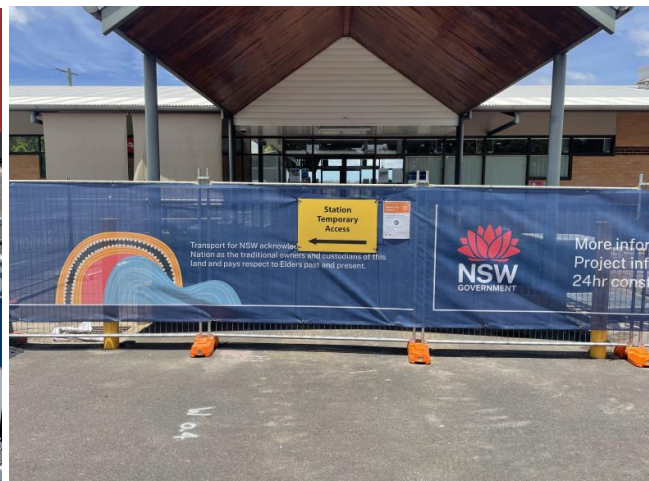
Site establishment and demolition work near the station entry and parking area is complete.

As part of this work, there are temporary changes to pedestrian access. Access to the station is now via the northern station entrance or the temporary access ramp installed at the southern end of the platform.

Areas will remain fenced off and temporary access arrangements will remain in place as work progresses.



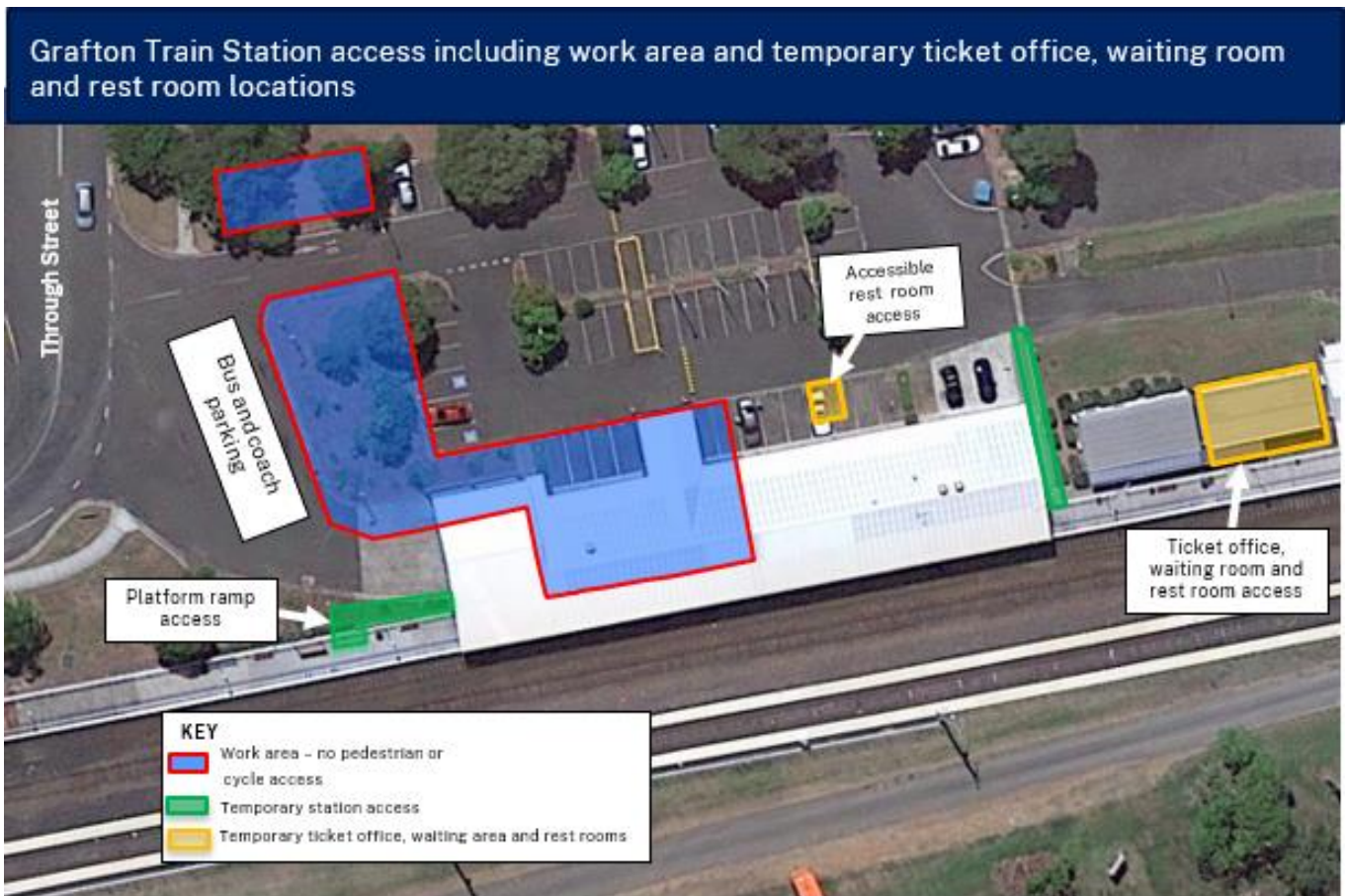
*Temporary ramp access to platform*



*Demolition near the station entry*

#### Upcoming work

From February 2023, the ticket office, waiting room and rest rooms will be temporarily relocated. Access will be via the northern end of the train station platform. Access to the accessible rest room will be via the car park. This work is expected to be complete mid-May.



There will be no impact to bus and train timetables while we carry out this work, however further access changes may be required. Please plan your journey and follow the direction of station staff and signage.

## Construction hours

Working hours are from 7am to 6pm Monday to Friday, and 8am to 1pm Saturdays. No work will be carried out on Sundays or on public holidays. We will notify nearby residents and businesses in advance if we need to work outside these times. All work is dependent on weather and site conditions and subject to change.

## How will this work affect you?

This work will involve use of machinery which generate noise and vibration. We will make every effort to minimise these impacts by turning off machinery and vehicles when not in use.

## Traffic changes

There will be temporary traffic changes to ensure the safety of pedestrians and motorists and to accommodate temporary bus access. Traffic control and signage will be in place to help pedestrians and motorists. Please follow the direction of traffic control and signs.

## **Contact us**

If you have any questions or would like more information, please contact our project team:

1800 684 490 (or 1800 775 465 for urgent enquiries)

[projects@transport.nsw.gov.au](mailto:projects@transport.nsw.gov.au)

[www.transport.nsw.gov.au-grafton](http://www.transport.nsw.gov.au-grafton)

## **Translating and interpreting service**

If you need help understanding this information, please contact the Translating and Interpreting Service on 131 450 and ask them to call us on 1800 684 490.

