

# Henry Lawson Drive Upgrade Stage 1A

## Work Notice

October 2023



Transport for NSW acknowledges the Traditional Custodians of the lands on which we work and pay respects to Elders past and present.

Transport for NSW is upgrading Henry Lawson Drive, between Tower Road, Bankstown Aerodrome and Auld Avenue.

### Changes to shared pedestrian and cycle path

We will be installing power poles in the existing shared pedestrian cycle path on the **western side of Henry Lawson Drive between Auld Avenue and Newbridge Road, Milperra**. This requires us to temporarily narrow the existing path from 2.5 meters to 1.2 meters.

#### What this means for cyclists

- Cyclist will be required to dismount for approximately a 70-meter section of the path, to safely pass the location where the new power poles are being installed.
- The path will remain open, and cyclist can still use the path, however, they will be required to dismount.
- Signage will be in place at various locations along the path notifying cyclists to dismount.

### Duration of impacts

**Changes to the shared path will begin 15 October 2023 and will remain constrained for 12 to 18 months** during the installation of power poles and whilst associated roadworks continues along the alignment.

At the completion of works, the existing path will be restored to 2.5 meters.

Our normal work hours will be between **7am and 6pm** from **Monday to Friday** and between **8am and 1pm** on

Saturday. We will not work on Sunday and during public holidays.

Our night work hours will be **Sunday to Thursday** from **8pm to 5am** the next day to minimise traffic disruptions and reduce safety risks to workers and road users.

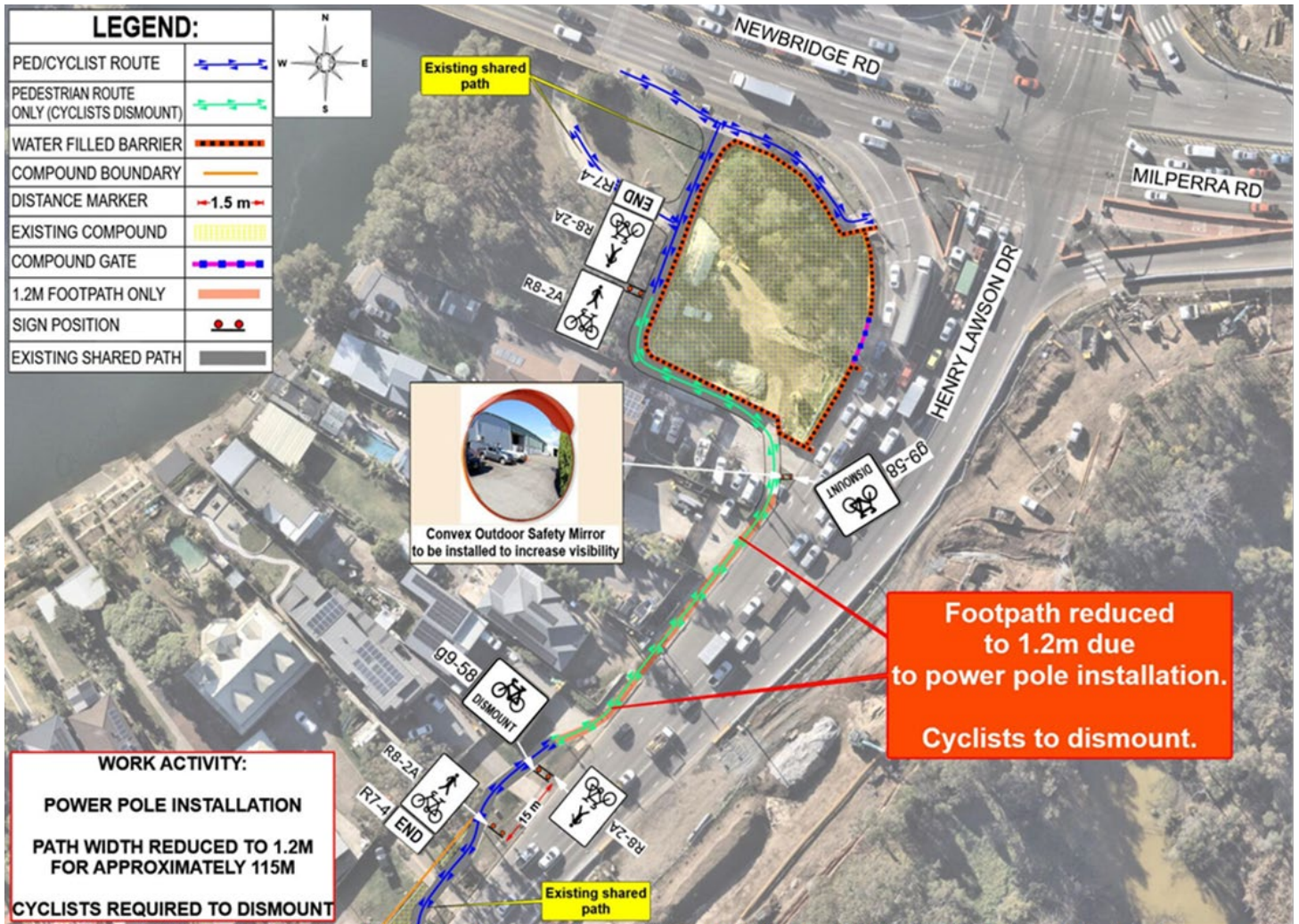
When required, we will work up to five nights a week, weather permitting, and excluding public holidays. We will contact those directly impacted by night works in advance.

### Managing our impacts

We will make every effort to minimise impacts to the local community and motorists in the area by keeping noise to a minimum and directing lights away from residential areas, wherever possible.

For the latest traffic updates, call 132 701, visit [livetraffic.com](http://livetraffic.com) or download the Live Traffic NSW app.





Map shows location of the location of the 70-meter section of shared path where cyclists are required to dismount.

## Contact us



Project Infoline **1800 953 560**



**HLDcommunity@quickway.com.au**



**nswroads.work/hld1a**



### Interpreter service

For languages other than English call 131 450  
 Arabic • Cantonese • Hindi • Mandarin • Vietnamese  
 لطلب خدمة الترجمة الشفهية للغات غير الإنجليزية اتصل بالرقم  
**131 450**

獲取英語以外的其他語言傳譯協助服務可以致電**131 450**  
 अंग्रेज़ी के अतिरिक्त अन्य भाषाओं के लिए दुभाषिया सेवा **131 450**  
 पर कॉल करें

获取英语以外的其他语言口译协助服务可以致电**131 450**  
 Để có dịch vụ thông ngôn cho các ngôn ngữ khác tiếng Anh,  
 gọi số **131 450**



Subscribe for updates at [projects@transport.nsw.gov.au](mailto:projects@transport.nsw.gov.au)

[www.transport.nsw.gov.au/privacy-statement#Your\\_Privacy](http://www.transport.nsw.gov.au/privacy-statement#Your_Privacy)