

More Trains, More Services

Hurstville Crossover Project



To contribute to an improved rail network, track work will be completed near Hurstville Station to install a rail crossover.

A crossover is a section of rail that connects two parallel tracks, allowing trains to cross over from one track to another. This will mean that local services travelling away from the city can end their journey at Platform 4, and then using the crossover tracks, can start their return service to the city from Platform 3.

What's been happening?

During February, we installed new drainage, overhead wiring structures, and cable routes. The project team additionally completed archaeological testing on excess material and signalling works.

What's planned next?

During June, we will carry out the following activities:

- removal and installation of drainage
- overhead wiring structure support
- signalling installations.

Changes to construction hours

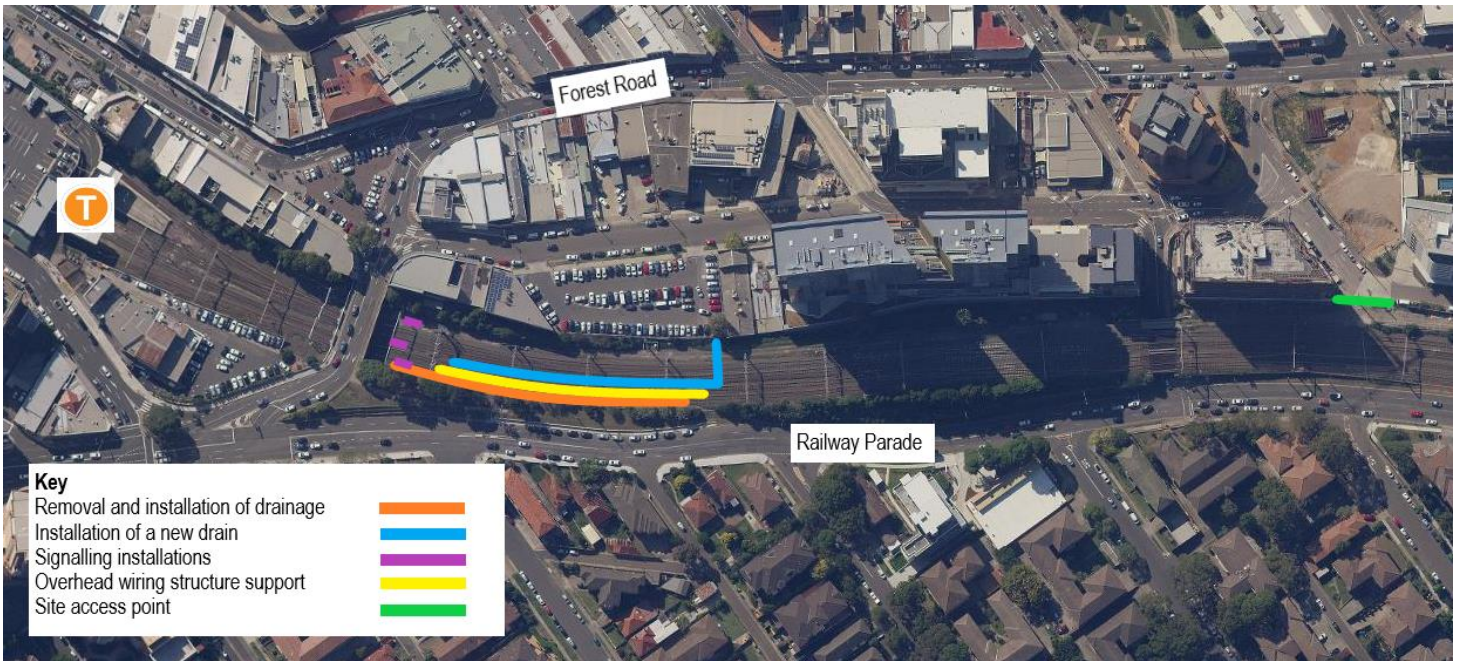
To support the construction industry through Coronavirus, the NSW Government has extended an amendment to the legislation regarding standard construction hours. This amendment enables activities to be carried out between 7am and 6pm on weekdays, weekends, and public holidays. We will always be mindful of the community when planning construction activities to reduce the impact where possible.

Are there activities planned outside of standard construction hours?

Work has been scheduled to occur from:

- 11pm, Friday 25 June to 8pm, Sunday 27 June

Scheduling construction work outside of standard construction hours enables our construction team to complete essential activities safely inside the rail corridor. It is expected this work will generate noticeable noise for some residents. We will contact residents directly impacted by these construction activities.



Where will work take place?

The above map shows the project area inside the rail corridor in Hurstville. The site access points are from Hurstville Station and Jack Brabham Drive.

How do we consider the community?

The project team understands construction activities may cause disruption for the community and we thank you for your patience as we carry out this work. We will adhere to strict environmental conditions relating to noise, vibration and dust management.

Will alternative transport services be running during scheduled track work weekends?

For up to date information about replacement services during this scheduled trackwork period please visit transportnsw.info or call 131 500. The work is dependent on weather and site conditions and is subject to change.

About More Trains, More Services

Over the next ten years the More Trains, More Services program will simplify and modernise the rail network so that customers can expect more frequent train services, with less wait times, less crowding and more seats on a simpler, more reliable network.

There's a lot of work happening

Currently there are multiple project teams, transport agencies and contractors working within the Hurstville rail corridor.

For more information on work completed by Sydney Trains, please contact 1300 656 999, or visit www.transport.nsw.gov.au/sydtraincommunity

Contact us

For more information or to subscribe for project updates:

- project information line: 1800 684 490**
- 24/7 construction response line: 1800 775 465**
- projects@transport.nsw.gov.au**
- www.transport.nsw.gov.au/mtms**

Translation

If you require the services of an interpreter, please contact the Translating and Interpreting Service on **131 450** and ask them to contact Transport for NSW on **1800 684 490**.

An interpreter will assist you with translation.

