

# More Trains, More Services

## Hurstville Crossover Project



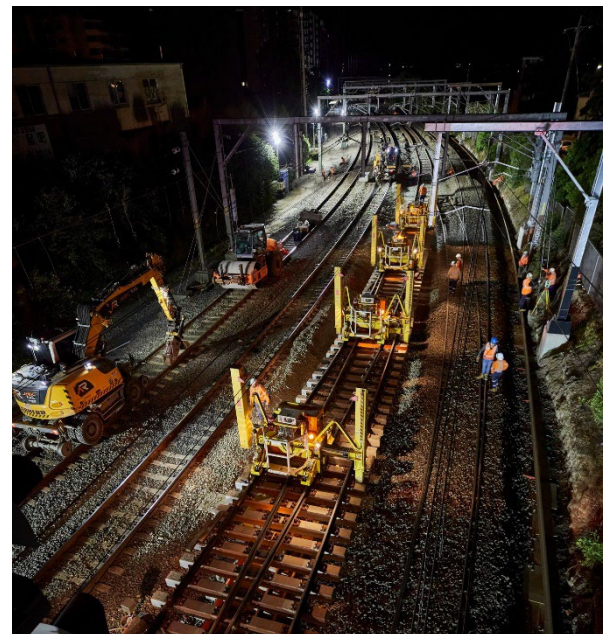
### What are we doing at Hurstville?

We are upgrading the rail infrastructure near Hurstville Station to allow trains to cross over from one track to another. This will mean that local services travelling away from the city can end their journey at Hurstville Station on Platform 4 and then start their return service to the city from Platform 3.

### What's been happening?

In September the project team reached a major milestone with the successful installation of a brand new crossover that connects two parallel tracks.

The photo on the right shows the new crossover being installed using remote-controlled transportation trolleys.





### What's planned next?

In November the project team will install new signalling, overhead wiring and drainage infrastructure inside the rail corridor.

We will also utilise the site compounds at Forest Road and Woniara Road for storage of materials and equipment, pre-start work meetings and worker parking.

### When will construction take place?

To support the construction industry through the COVID-19 pandemic, the NSW Government has extended an amendment to the legislation regarding standard construction hours. This amendment enables activities to be carried out between **7am and 6pm Monday to Sunday and public holidays**.

Some construction work will take place outside of these hours between **5am Saturday 13 November through to 10pm Sunday 14 November**. This work will take place during a scheduled Sydney Trains trackwork period when no trains will be running. Scheduling work during Sydney Trains trackwork periods enables our construction team to complete essential activities safely inside the rail corridor.

This work is dependent on weather and site conditions and is subject to change.

### Where will work take place?

The above map shows the project area inside the rail corridor in Hurstville. The site access point is via Hill Street and Jack Brabham Drive.

Please refer to the map overleaf for the site compounds at Forest Road and Woniara Road.

### How are we staying safe?

In line with current Australian Government guidelines around slowing the spread of Coronavirus the site will have a dedicated Covid Marshall as per current NSW Health guidelines and all necessary hygiene practices will be observed.

### How do we consider the community?

The project team understands construction activities may cause disruption for the community and we thank you for your patience as we carry out this work. We will adhere to strict environmental conditions relating to noise, vibration and dust management.

### About More Trains, More Services

Over the next ten years the More Trains, More Services program will simplify and modernise the rail network so that customers can expect more frequent train services, with less wait times, less crowding and more seats on a simpler, more reliable network.

## Forest Road and Woniara Road compounds



### Will alternative transport services be running during scheduled track work weekends?

For up to date information about replacement services during this scheduled trackwork period please visit [transportnsw.info](http://transportnsw.info) or call 131 500. The work is dependent on weather and site conditions and is subject to change.

### Community Engagement Survey

The project team would like your feedback on the way we keep you informed about construction activities relating to the projects we are delivering. This survey will take no more than five minutes to complete and will be used to inform and improve the way we communicate with our stakeholders and the community.

As part of our survey and in appreciation of your time the project team will be donating \$5 to a charity of your choice for each individual survey completed. The survey can be accessed via the QR code below:



### There's a lot of work happening

Currently there are multiple project teams, transport agencies and contractors working within the Hurstville rail corridor. For more information on work completed by Sydney Trains, please contact **1300 656 999**, or visit [www.transport.nsw.gov.au/sydtraincommunity](http://www.transport.nsw.gov.au/sydtraincommunity).

### Contact us

For more information or to subscribe for project updates:

 project information line: 1800 684 490

 24/7 construction response line:  
1800 775 465

 [projects@transport.nsw.gov.au](mailto:projects@transport.nsw.gov.au)

 [www.transport.nsw.gov.au/mtms](http://www.transport.nsw.gov.au/mtms)

### Translation



If you require the services of an interpreter, please contact the Translating and Interpreting Service on 131 450 and ask them to contact Transport for NSW on 1800 684 490.

An interpreter will assist you with translation.