

More Trains, More Services

Hurstville Crossover project



What happened in September?

During September, we continued with preliminary site investigations at Hurstville in preparation for construction of the crossover.

What's planned next?

During October, excess material excavated at Sydney Terminal, near Central Station, will be transported to the Hurstville project site. This is required for a team of archeologists to sift through the material and ensure that we can conserve any heritage items that may be found.

When will day work occur?

During October, it will be necessary to undertake **day works** from 7am to 6pm Monday to Friday, and 8am to 1pm on Saturday.

Are there activities planned out of hours?

To minimise disruption to customers, and to improve the safety of workers and the community, **oversize deliveries** will take place on the following evenings:

- 10pm, Friday 2, to 2am, Tuesday 6 October.

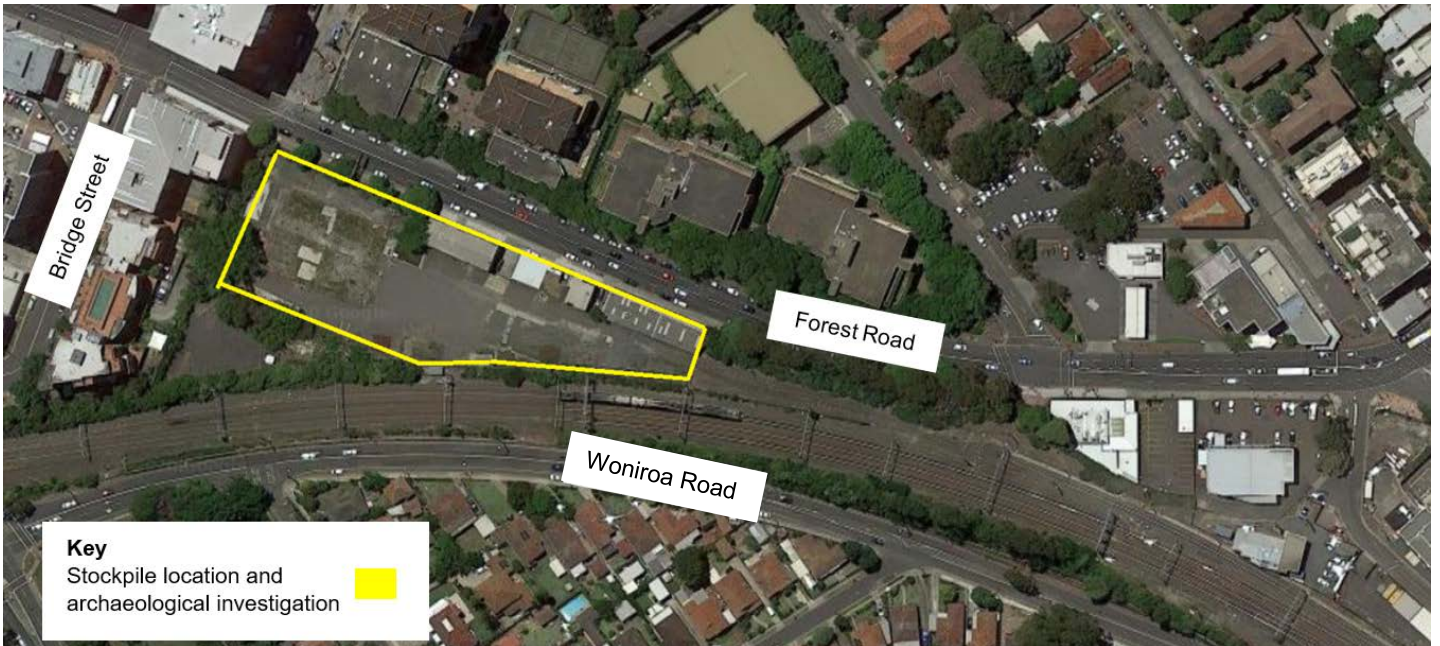
One truck will travel from Sydney Terminal to stockpile the excavated material at the Hurstville project site. The material will be unloaded by a front end loader.

Residential parking and side streets will remain open during this time.

These works are not expected to be noisy but every effort will be made to ensure that measures are in place to minimise noise as much as possible such as turning machinery and vehicles off when not in use and using non-tonal reversing beepers.

We will also have traffic control and signage for vehicles and cyclists travelling in the vicinity of the site location to reduce any disruption to the local community.

These works are dependent on weather and site conditions and are subject to change.



How do we consider the community?

The project team understands construction activities may cause disruption for the community and we will seek to minimise impacts as much as possible.

We will also ensure we adhere to strict environmental conditions relating to noise, vibration and dust management.

How are we staying safe?

We continue to deliver projects across NSW while ensuring the safety of all staff and the community. In line with current Australian Government guidelines around slowing the spread of Coronavirus and social distancing, all work will be carried out at a safe physical distance where possible and necessary hygiene practices will be observed.

About More Trains, More Services

Over the next ten years the More Trains, More Services program will simplify and modernise the rail network so that customers can expect more frequent train services, with less wait times, less crowding and more seats on a simple, more reliable network.

Where will the work take place?

The above map shows the location of work is inside the rail corridor on Forest Road, Hurstville.

Contact us

For more information or to subscribe for project updates:

 **project information line: 1800 684 490**

 **24/7 construction response line: 1800 775 465**

 **projects@transport.nsw.gov.au**

 **www.transport.nsw.gov.au/mtms**

Translation



If you require the services of an interpreter, please contact the Translating and Interpreting Service on **131 450** and ask them to contact Transport for NSW on **(02) 9200 0200**.

An interpreter will assist you with translation.