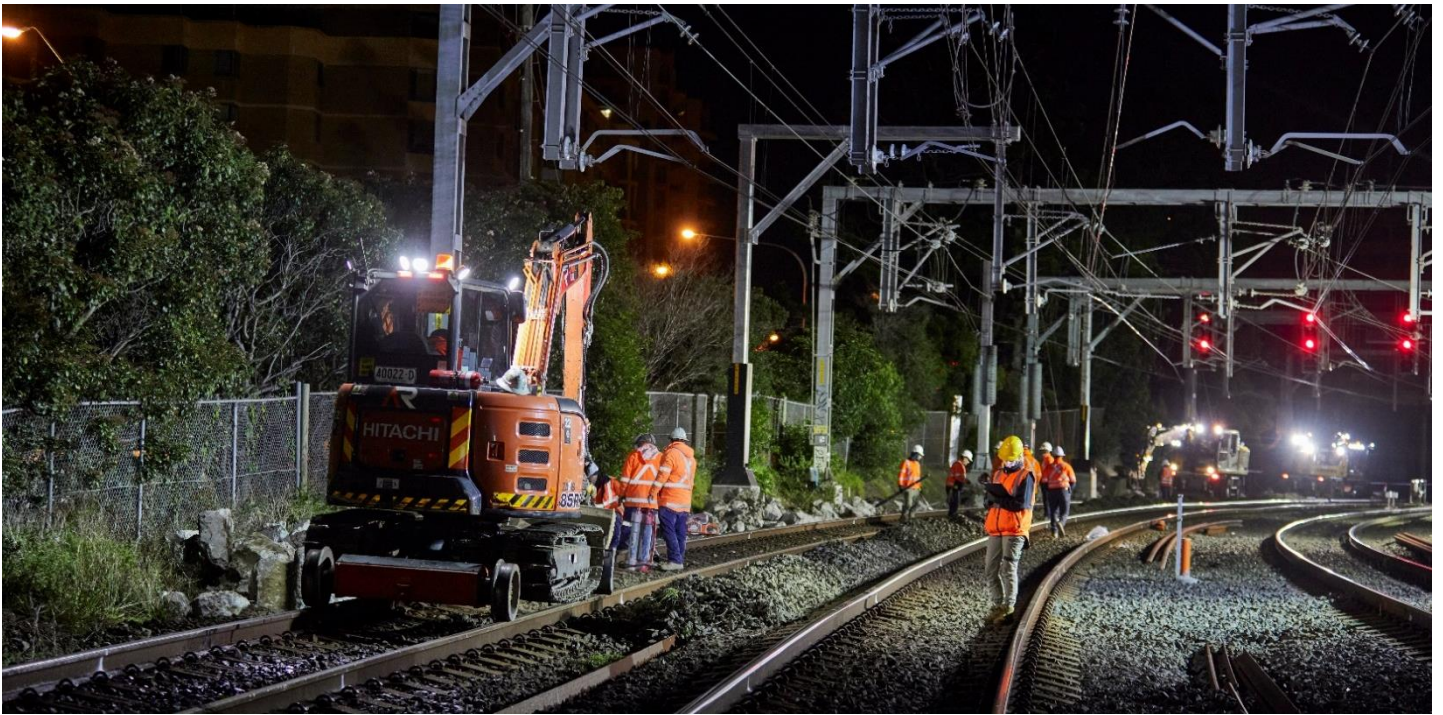


More Trains, More Services

Hurstville Crossover Project



What are we doing at Hurstville?

To contribute to an improved rail network, track work will be completed near Hurstville Station to install a rail crossover.

A crossover is a section of rail that connects two parallel tracks, allowing trains to cross over from one track to another. This will mean that local services travelling away from the city can end their journey at Hurstville Station on Platform 4, and then using the crossover tracks, can start their return service to the city from Platform 3.

What's been happening?

Since June we have removed and installed new drainage, installed overhead wiring support structures, and upgraded signalling configurations.

What's planned next?

In September, the project team will carry out the installation of the track crossover and signalling installations inside the rail corridor. We will also

continue to utilise the site compounds at Forest Road, Woniara Road and Allawah Station for storage of materials and equipment, pre-start work meetings, worker parking and to assemble the rail tracks before they are installed inside the rail corridor.

When will construction take place?

Standard construction hours are 7am to 6pm Monday to Friday and 8am to 1pm on Saturdays.

The NSW Government has allowed construction sites to work extended hours across weekends and public holidays (to 6pm on Saturdays and 7am-6pm on Sundays and public holidays) throughout the COVID-19 pandemic. These extended work hours enable the construction industry to practice appropriate social distancing with fewer workers on site on any given day by allowing work to be spread across more days in the week.



Are there activities planned outside of standard construction hours?

Work has been scheduled to occur outside of standard construction hours inside the rail corridor from **11pm Friday 10 September to 10pm Sunday 12 September**. This work will take place during a scheduled Sydney Trains trackwork period when no trains will be running.

Scheduling construction work outside of standard construction hours enables our construction team to complete essential activities safely inside the rail corridor.

This work is dependent on weather and site conditions and is subject to change.

Should this work be impacted based on advice by the NSW Government, the community will be notified.

Where will work take place?

The above map shows the project area inside the rail corridor in Hurstville. The site access points are Jack Brabham Drive, Forest Road, Woniara Road, and Railway Parade near Allawah Station.

Please refer to the maps overleaf for the location of the site compounds at Forest Road, Woniara Road and Allawah Station.

How are we staying safe?

We continue to deliver projects across NSW while ensuring the safety of all staff and the community.

In line with current Australian Government guidelines around slowing the spread of Coronavirus the site will have a dedicated Covid Marshall to ensure all people entering the site

have been tested for Covid-19 and are safe to enter the site (19 (as per current NSW Health guidelines), masks will be worn at all times, and where possible all work will be carried out at with a 1.5m physical distance and all necessary hygiene practices will be observed.

How do we consider the community?

The project team understands construction activities may cause disruption for the community and we thank you for your patience as we carry out this work. We will adhere to strict environmental conditions relating to noise, vibration and dust management.

Contact us

For more information or to subscribe for project updates:

 **project information line: 1800 684 490**

 **24/7 construction response line: 1800 775 465**

 **projects@transport.nsw.gov.au**

 **www.transport.nsw.gov.au/mtms**

Translation



If you require the services of an interpreter, please contact the Translating and Interpreting Service on **131 450** and ask them to contact Transport for NSW on **1800 684 490**.

An interpreter will assist you with translation.

Forest Road and Wonoira Road site compound locations



Allawah Station site compound location



Will alternative transport services be running during scheduled track work weekends?

For up to date information about replacement services during this scheduled trackwork period please visit transport.nsw.info or call 131 500. The work is dependent on weather and site conditions and is subject to change.

There's a lot of work happening

Currently there are multiple project teams, transport agencies and contractors working within the Hurstville rail corridor. For more information on work completed by Sydney Trains, please visit www.transport.nsw.gov.au/sydraincommunity or contact 1300 656 999.