

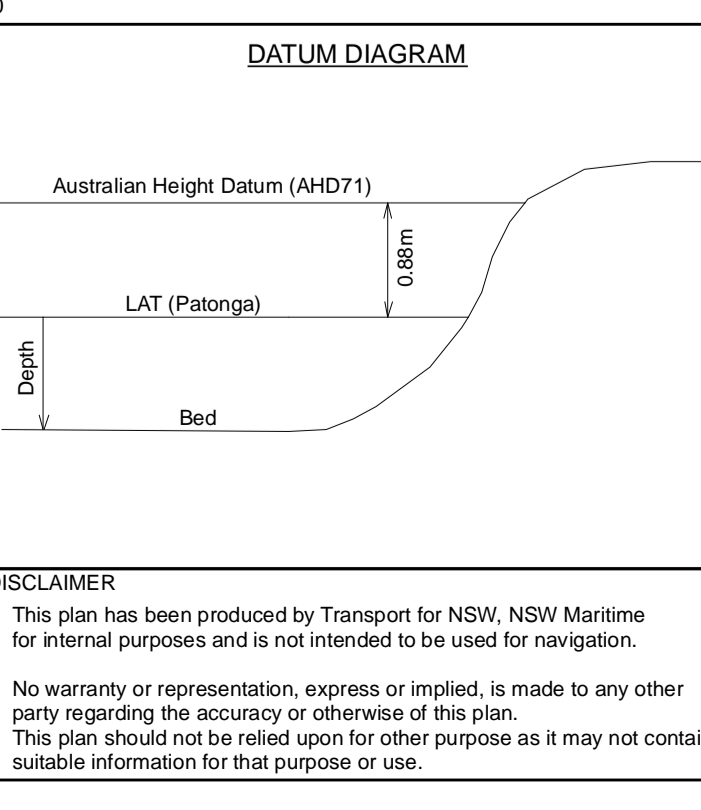
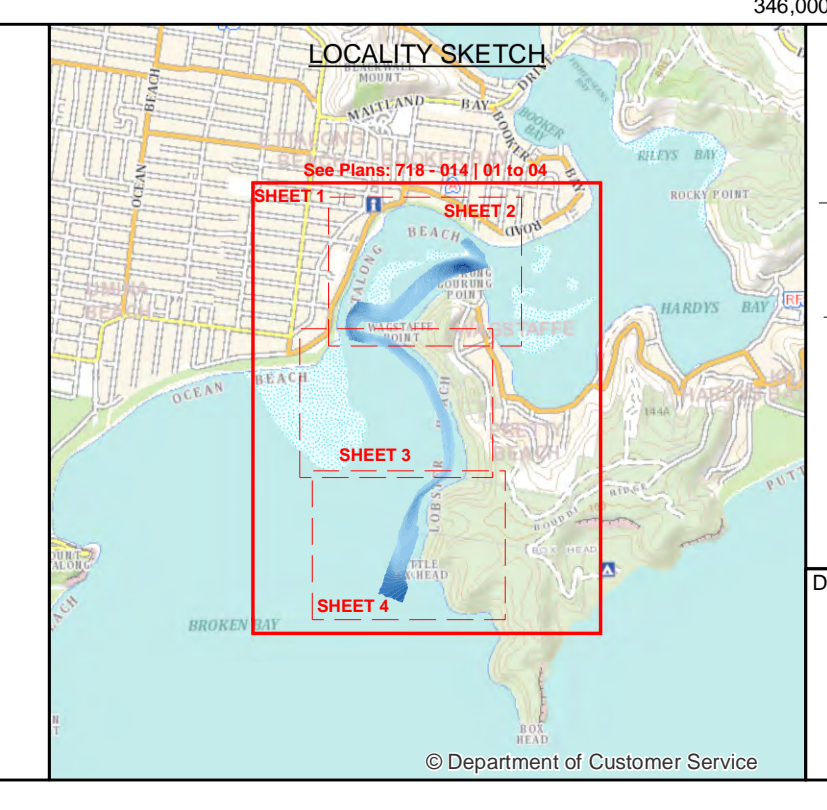


NOTE:
Please be advised that the aids to navigation (AtoN) shown on this plan may not have been verified as part of this hydrographic survey. The positions of AtoN shown hereon are plotted from coordinates held in the Maritime spatial database.
Due to the dynamic nature of the waterways the AtoN may be relocated at any time to maintain the best possible channel.
Contours have been derived from filtered soundings and have been smoothed for the purpose of clarity and presentation on the plan.
In some areas the location of the smoothed contours may not agree with the adjacent soundings.
The actual soundings should always be used for any subsequent analysis.

Contour interval: 0.5m
Soundings: Shown based in true position
Aerial Image © Neamap Date: 29th October 2023

LEGEND

	Aid To Navigation	6.5 to 7 metres
	East Cardinal - Beacon with TM	7 to 7.5 metres
	Li Port Buoy - No Top Mark	0 to 0.5 metres
	Li Port Buoy - Aqua Buoy	0.5 to 1 metres
	Li Starboard - Beacon with TM	1 to 1.5 metres
	Li Starboard - No Top Mark	1.5 to 2 metres
	Li Starboard - Aqua Buoy	2 to 2.5 metres
	Li Starboard - Beacon with TM	2.5 to 3 metres
	Li Starboard - No Top Mark	3 to 3.5 metres
	Li Starboard - Aqua Buoy	3.5 to 4 metres
	North cardinal - pile beacon	4 to 4.5 metres
	Special - pile beacon	4.5 to 5 metres
	Special Mark - Can Buoy NTM	5 to 5.5 metres
	Special Mark - Conical Buoy NTM	5.5 to 6 metres
		6 to 6.5 metres
		6.5 to 7 metres
		7 to 7.5 metres
		7.5 to 8 metres
		8 to 8.5 metres
		8.5 to 9 metres
		9 to 9.5 metres
		9.5 to 10 metres
		10 to 10.5 metres
		10.5 to 11 metres
		11 to 11.5 metres
		11.5 to 12 metres
		12 to 12.5 metres
		12.5 to 13 metres
		13 to 13.5 metres
		Greater than 13.5 metres



DATUM: Soundings are in metres and decimetres reduced to the Lowest Astronomical Tide (LAT).
This datum is adopted as 0.88 metres below Australian Height Datum 1971 (AHD71).
Title: Geopac - Patong - Station No.212440
Source: Many Hydraulics Laboratory
Report: MHL212440 April 2023
Undertaken figures are drying heights in metres and decimetres above LAT.
This plan is produced on the Geocentric Datum of Australia 2020 (GDA2020).
The map projection is Map Grid of Australia (MGA) zone 56.

SURVEY INFORMATION:
Sounded by: Echo Sounder
Date of Survey: 12/11/2023
Navigation & Processing System: Position & Tides by Hypack
Field Book: 718-014

DISCLAIMER:
This plan has been produced by Transport for NSW, NSW Maritime for internal purposes and is not intended to be used for navigation.
No warranty or representation, express or implied, is made to any other party regarding the accuracy or otherwise of this plan.
This plan should not be relied upon for other purpose as it may not contain suitable information for that purpose or use.

NSW HYDROGRAPHIC SURVEY
BROKEN BAY
ETTALONG CHANNEL - POST DREDGE
NOVEMBER 2023

Scale 1:2,000
0 25 50 75 100 125 Metres

Previous Plan: 718 - 057 | 01 to 04 Date printed: 10/11/2023

718 - 014 | 01

OFFICIAL SHEET 1 OF 4 SHEETS

ETTALONG BEACH

BOOKER BAY

Ettalong Beach

Kourung Gourung Point

Wagstaffe Point

BOUDDI NATIONAL PARK

WAGSTAFFE

SEE SHEET 3

NSW
HYDROGRAPHIC SURVEY
 BROKEN BAY
 ETTALONG CHANNEL - POST DREDGE
 NOVEMBER 2023

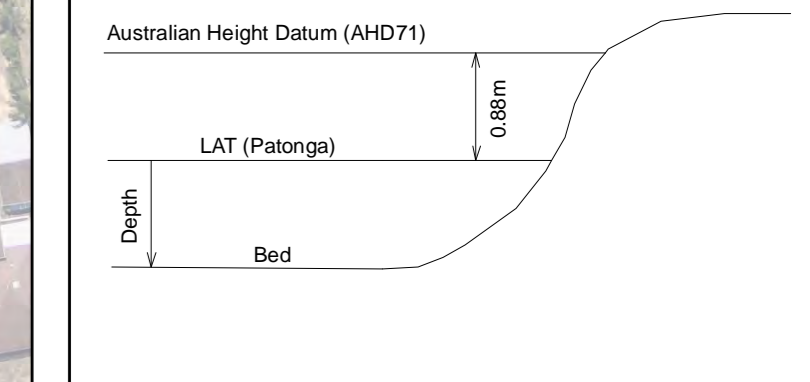
1:1,200
 @ A4 sheet size
 0 50 100
 Metres

DATUM:
 Soundings are in metres and decimetres reduced to the Lowest Astronomical Tide (LAT).
 This datum is adopted as 0.88 metres below Australian Height Datum 1971 (AHD71).
 Tide Gauge: Patonga - Station No.212440
 Source: Manly Hydraulics Laboratory
 Report: MHL2786 April 2023
 Underlined figures are drying heights in metres and decimetres above LAT.
 This plan is produced on the Geocentric Datum of Australia 2020 (GDA2020).
 The map projection is Map Grid of Australia (MGA) zone 56.

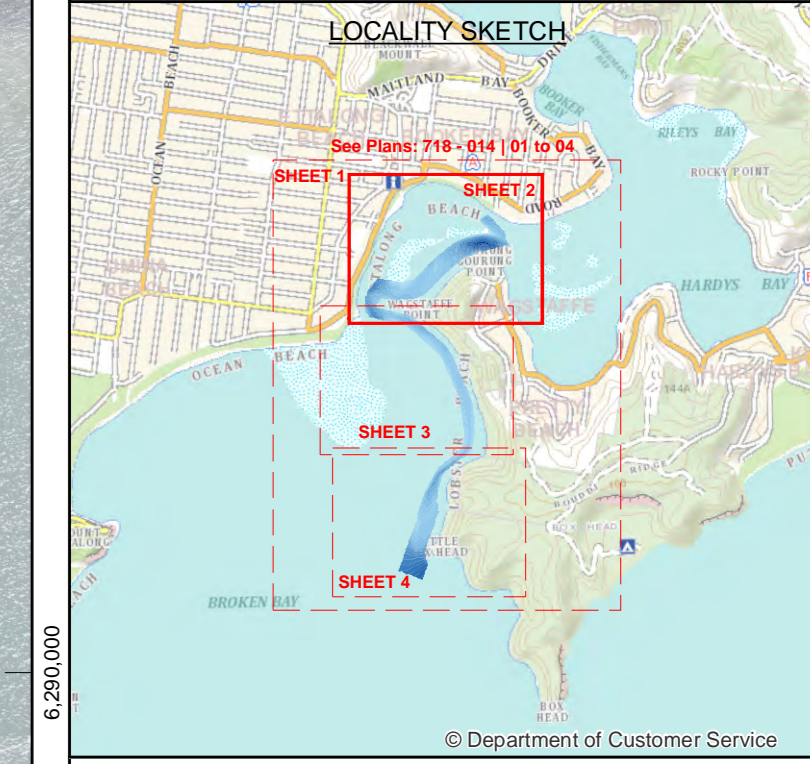
SURVEY INFORMATION:
 Sounded by: Echo Sounder Date of Survey: 1-10/2023
 CESSORE Navigation & Processing System Position & Tides by: HUGO SmartNet RTK GNSS
 Hypack Field Book: 718-014

GIS SPECIALIST
HYDROGRAPHIC SURVEYOR

A/SURVEY MANAGER
DATUM DIAGRAM



DISCLAIMER:
 This plan has been produced by Transport for NSW, NSW Maritime for internal purposes and is not intended to be used for navigation.
 No warranty or representation, express or implied, is made to any other party regarding the accuracy or otherwise of this plan.
 This plan should not be relied upon for other purposes as it may not contain suitable information for that purpose or use.



LEGEND

Depth	6.5 to 7 metres
-0.5 to 0 metres	7 to 7.5 metres
0 to 0.5 metres	7.5 to 8 metres
0.5 to 1 metres	8 to 8.5 metres
1 to 1.5 metres	8.5 to 9 metres
1.5 to 2 metres	9 to 9.5 metres
2 to 2.5 metres	9.5 to 10 metres
2.5 to 3 metres	10 to 10.5 metres
3 to 3.5 metres	10.5 to 11 metres
3.5 to 4 metres	11 to 11.5 metres
4 to 4.5 metres	11.5 to 12 metres
4.5 to 5 metres	12 to 12.5 metres
5 to 5.5 metres	12.5 to 13 metres
5.5 to 6 metres	13 to 13.5 metres
6 to 6.5 metres	Greater than 13.5 metres

- Aid To Navigation**
- East Cardinal - Aqua Buoy
 - Lit Port - Beacon with TM
 - Lit Port Buoy - No Top Mark
 - Lit Stbd Buoy - No Top Mark
 - Lit stbd. beacon - no top mark
 - Special Mark - Can Buoy NTM
 - Special Mark - Conical Buoy NTM

NOTE:
 Please be advised that the aids to navigation (AtoN) shown on this plan may not have been verified as part of this hydrographic survey.
 The positions of AtoN shown herein are plotted from coordinates held in the Maritime spatial database.
 Due to the dynamic nature of the waterways the AtoN may be relocated at any time to maintain the best possible channel.
 Contours have been derived from filtered soundings and have been smoothed for the purpose of clarity and presentation on the plan.
 In some areas the location of the smoothed contours may not agree with the adjacent soundings.
 The actual soundings should always be used for any subsequent analysis.

Contour Interval: 0.5m
 Soundings: Shoal based in true position
 Aerial Image © Neamap Date: 29th October 2023



SEE SHEET 2

Wagstaffe Point

BOUDDI NATIONAL PARK

WAGSTAFFE

Lobster Beach

SEE SHEET 4

NSW
HYDROGRAPHIC SURVEY
 BROKEN BAY
 ETALONG CHANNEL - POST DREDGE
 NOVEMBER 2023

1:1,200
 @ A4 sheet size
 0 50 100
 Metres

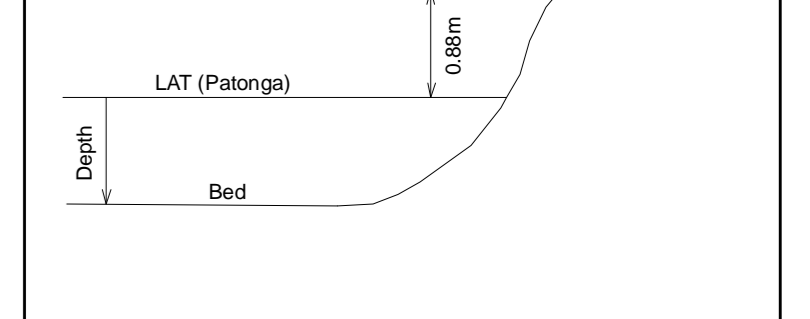
DATUM:
 Soundings are in metres and decimetres reduced to the Lowest Astronomical Tide (LAT).
 This datum is adopted as 0.88 metres below Australian Height Datum 1971 (AHD71).
 Tide Gauge: Patonga - Station No 212440
 Source: Manly Hydrographic Laboratory
 Report: MHL2786 April 2023
 Undrafted figures are drying heights in metres and decimetres above LAT.
 This plan is produced on the Geospatial Datum of Australia 2020 (GDA2020).
 The map projection is Map Grid of Australia (MGA) zone 56.

SURVEY INFORMATION:
 Sounded by: Echo Sounder Date of Survey: 1-2/11/2023
 GEOSCOPE Navigation & Processing System: Position & Tides by: HxGN SmartNet RTK GNSS
 Hipack Field Book: 718-014

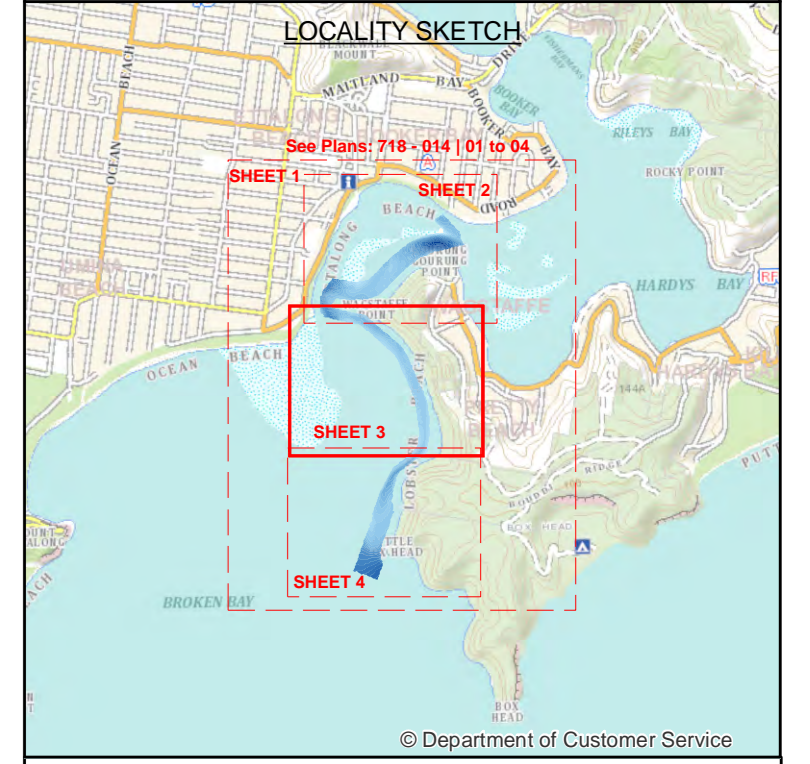
GIS SPECIALIST HYDROGRAPHIC SURVEYOR

A SURVEY MANAGER

DATUM DIAGRAM



DISCLAIMER:
 This plan has been produced by Transport for NSW, NSW Maritime for internal purposes and is not intended to be used for navigation.
 No warranty or representation, express or implied, is made to any other party regarding the accuracy or otherwise of this plan.
 This plan should not be relied upon for other purposes as it may not contain suitable information for that purpose or use.



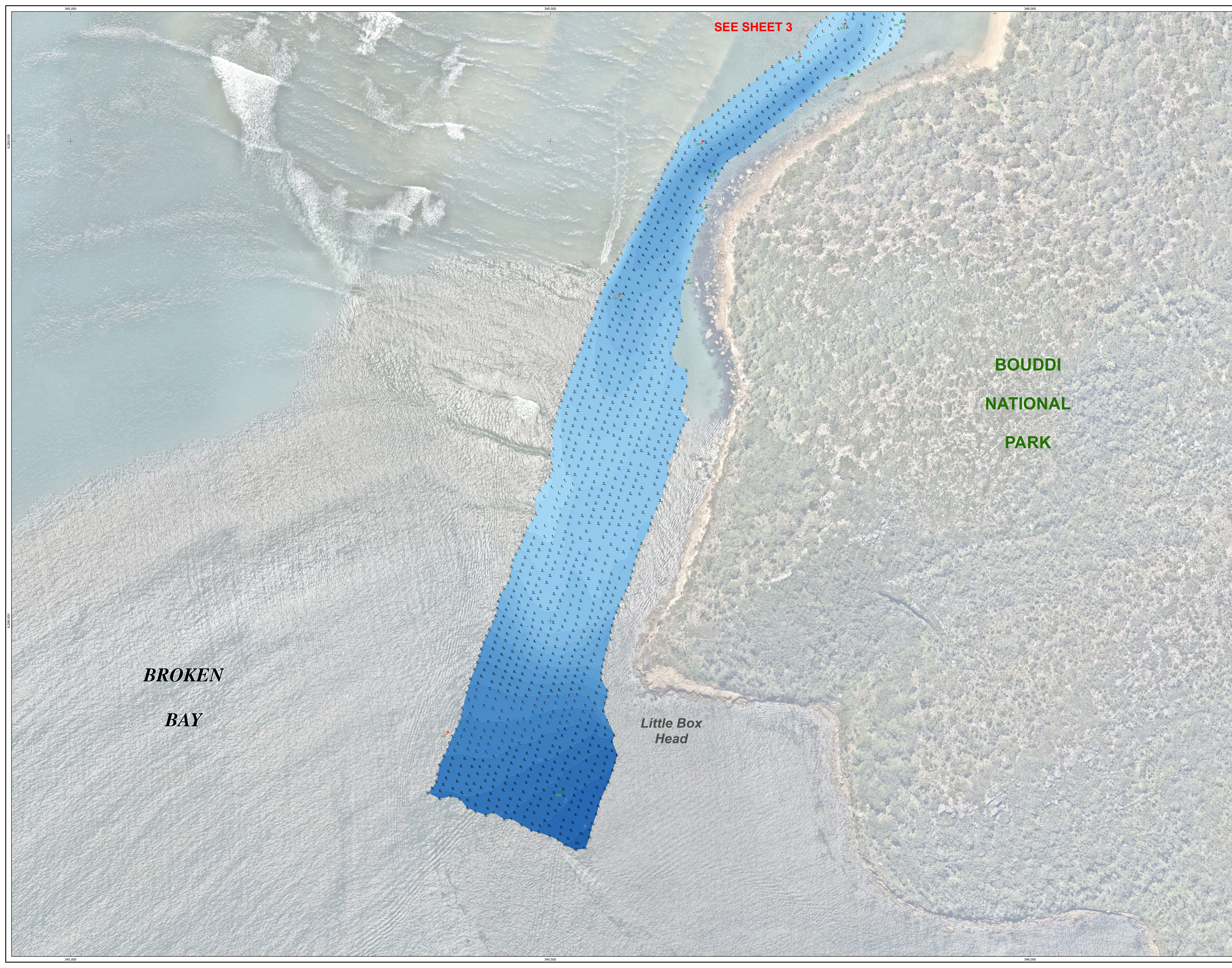
LEGEND

Depth	Color
-0.5 to 0 metres	Lightest Blue
0 to 0.5 metres	Light Blue
0.5 to 1 metres	Medium-Light Blue
1 to 1.5 metres	Medium Blue
1.5 to 2 metres	Dark-Medium Blue
2 to 2.5 metres	Dark Blue
2.5 to 3 metres	Very Dark Blue
3 to 3.5 metres	Dark Navy Blue
3.5 to 4 metres	Black-Blue
4 to 4.5 metres	Black
4.5 to 5 metres	Black
5 to 5.5 metres	Black
5.5 to 6 metres	Black
6 to 6.5 metres	Black
6.5 to 7 metres	Black
7 to 7.5 metres	Black
7.5 to 8 metres	Black
8 to 8.5 metres	Black
8.5 to 9 metres	Black
9 to 9.5 metres	Black
9.5 to 10 metres	Black
10 to 10.5 metres	Black
10.5 to 11 metres	Black
11 to 11.5 metres	Black
11.5 to 12 metres	Black
12 to 12.5 metres	Black
12.5 to 13 metres	Black
13 to 13.5 metres	Black
13.5 to 14 metres	Black
Greater than 13.5 metres	Black

- Aid To Navigation**
- Lit Port Buoy - No Top Mark
 - Lit Starboard - Aqua Buoy
 - Lit Stbd Buoy - No Top Mark
 - Lit stbd beacon - no top mark

NOTE:
 Please be advised that the aids to navigation (AtoN) shown on this plan may not have been verified as part of this hydrographic survey.
 The positions of AtoN shown herein are plotted from coordinates held in the Maritime spatial database.
 Due to the dynamic nature of the waterways the AtoN may be relocated at any time to maintain the best possible channel.
 Contours have been derived from filtered soundings and have been smoothed for the purpose of clarity and presentation on the plan.
 In some areas the location of the smoothed contours may not agree with the adjacent soundings.
 The actual soundings should always be used for any subsequent analysis.

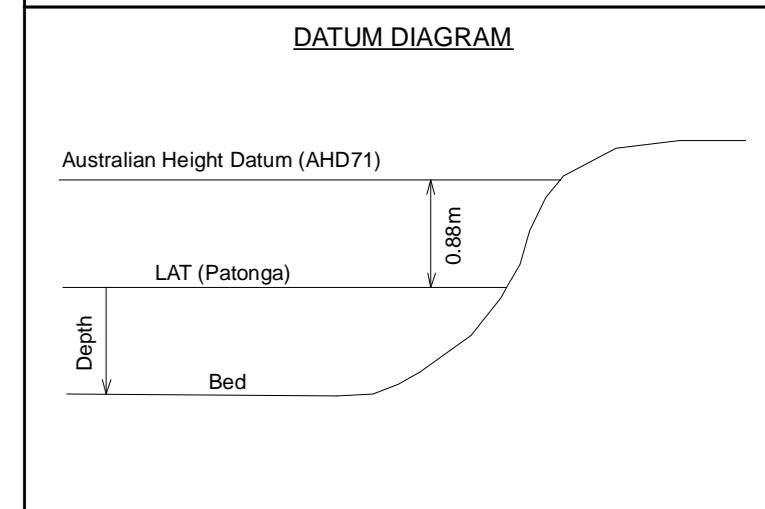
Contour Interval: 0.5m
 Soundings: Shoal based in true position
 Aerial Image © Nearemap Date: 29th October 2023
 Previous Plan: 719-007 | 01 to 04 Date printed: 10/11/2023



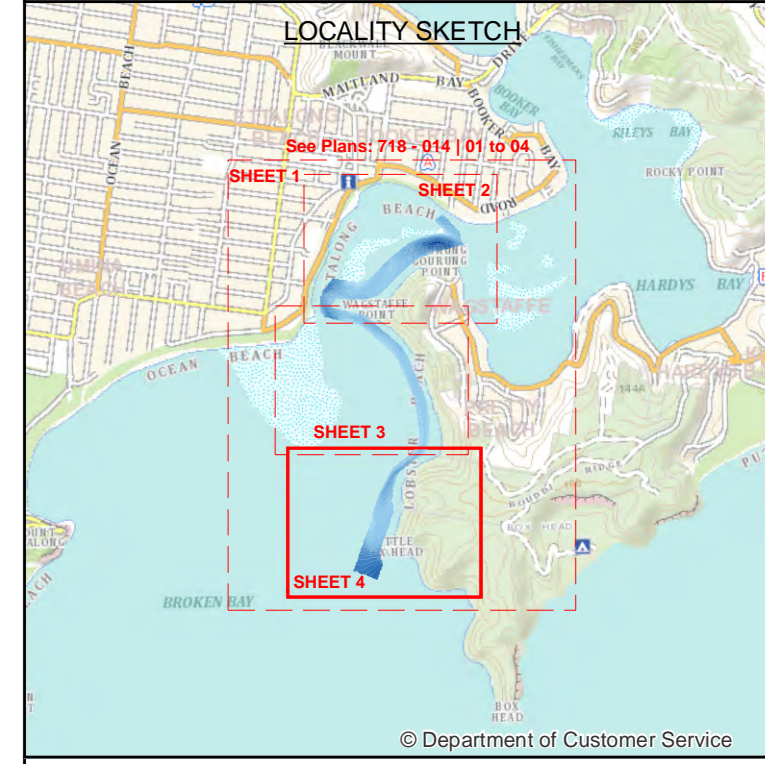
DATUM:
 Soundings are in metres and decimetres reduced to the Lowest Astronomical Tide (LAT).
 This datum is adopted as 0.88 metres below Australian Height Datum 1971 (AHD71).
 Tide Gauge: Patonga - Station No 212440
 Source: Many Hydrographic Laboratory
 Report: MHL2786 April 2023
 Underlined figures are drying heights in metres and decimetres above LAT.
 This plan is produced on the Geospatial Datum of Australia 2020 (GDA2020).
 The map projection is Map Grid of Australia (MGA) zone 56.

SURVEY INFORMATION:
 Sounded by Echo Sounder: Date of Survey: 12/11/2023
 GEOSCOPE: Navigation & Processing System: Position & Tides by: HydG SmartNet RTK GNSS
 Hippos: Field Book: 718-014

GIS SPECIALIST: [Signature]
 HYDROGRAPHIC SURVEYOR: [Signature]



DISCLAIMER
 This plan has been produced by Transport for NSW, NSW Maritime for internal purposes and is not intended to be used for navigation.
 No warranty or representation, express or implied, is made to any other party regarding the accuracy or otherwise of this plan.
 This plan should not be relied upon for other purpose as it may not contain suitable information for that purpose of use.



LEGEND

Depth	Color
-0.5 to 0 metres	Lightest Blue
0 to 0.5 metres	Light Blue
0.5 to 1 metres	Medium-Light Blue
1 to 1.5 metres	Medium Blue
1.5 to 2 metres	Dark-Medium Blue
2 to 2.5 metres	Dark Blue
2.5 to 3 metres	Very Dark Blue
3 to 3.5 metres	Dark Navy Blue
3.5 to 4 metres	Very Dark Navy Blue
4 to 4.5 metres	Blackish Blue
4.5 to 5 metres	Black
5 to 5.5 metres	Black
5.5 to 6 metres	Black
6 to 6.5 metres	Black
6.5 to 7 metres	Black
7 to 7.5 metres	Black
7.5 to 8 metres	Black
8 to 8.5 metres	Black
8.5 to 9 metres	Black
9 to 9.5 metres	Black
9.5 to 10 metres	Black
10 to 10.5 metres	Black
10.5 to 11 metres	Black
11 to 11.5 metres	Black
11.5 to 12 metres	Black
12 to 12.5 metres	Black
12.5 to 13 metres	Black
13 to 13.5 metres	Black
Greater than 13.5 metres	Black

- Aid to Navigation
- Lit Port Buoy - No Top Mark
 - Lit Starboard - Aqua Buoy
 - Lit Sbd Buoy - No Top Mark
 - Lit stbd. beacon - no top mark

NOTE:
 Please be advised that the aids to navigation (AtoN) shown on this plan may not have been verified as part of this hydrographic survey.
 The positions of AtoN shown herein are plotted from coordinates held in the Maritime spatial database.
 Due to the dynamic nature of the waterways the AtoN may be relocated at any time to maintain the best possible channel.
 Contours have been derived from filtered soundings and have been smoothed for the purpose of clarity and presentation on the plan.
 In some areas the location of the smoothed contours may not agree with the adjacent soundings.
 The actual soundings should always be used for any subsequent analysis.