



Kamay Ferry Wharves

Causeway and access road construction and service investigations at La Perouse

July 2023



Transport for NSW acknowledges the Gweagal and Bidjigal people as the Traditional Custodians of the lands on which we work and pays respect to Elders past and present.

What work are we doing?

From **Monday 17 July 2023** the key upcoming work activities at La Perouse includes:

- Installation of the crane pad and access road (within the construction site).
- Construction of the temporary access structure (called a causeway). These works are expected to take place until the end of September.
- Service investigation works to confirm existing utilities in the area. This work will take up to five days.

All work activities and dates provided are subject to weather and site conditions.

The works will take place during our normal daytime hours **7am to 6pm, Monday to Friday and 8am to 1pm, Saturday**.

What will this mean for you?

During the causeway and crane pad construction work you may notice:

- Machinery such as excavators, vibration rollers and heavy vehicle deliveries to the construction site. There may be noise associated with this type of activity.
- You may also notice some vibration while the causeway construction works are carried out. Vibration is a normal occurrence for this type of work and should not be a cause for concern.

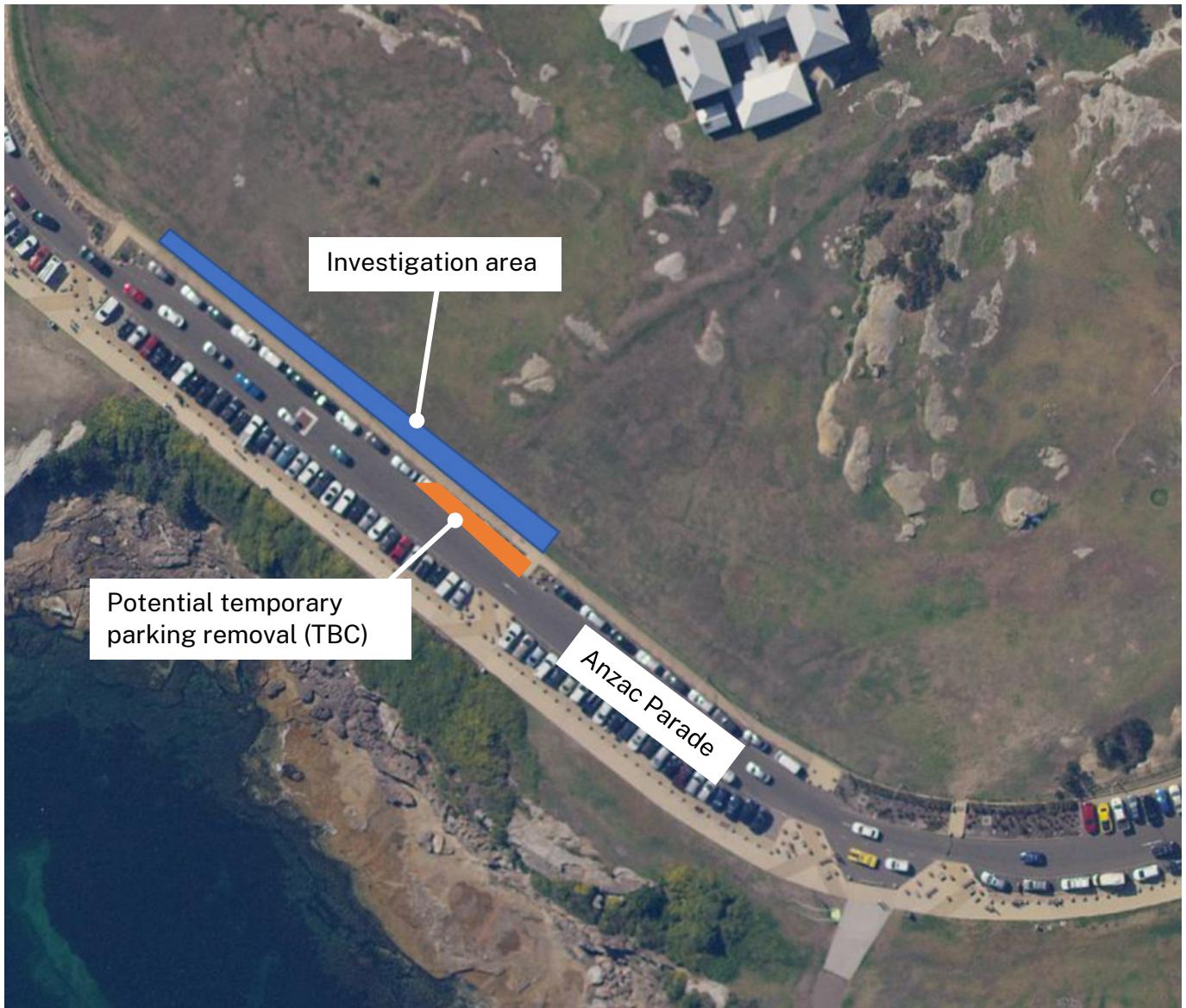
Vibration and noise monitoring will be carried out during the works and in accordance with the approved Noise and Vibration Management Plan.

There is more information about the causeway work on our website.

During our service investigation work on Anzac Parade, you may notice:

- Workers with hand tools conducting investigations.
- If we are unable to locate certain services, we may need to use non-destructive digging (NDD) / sucker truck – this would mean temporarily removing around five parking spaces while we work (refer to map overleaf). We will provide signs to let visitors know of any impacts.
- Traffic control will be in place, please follow signage and directions.
- Pedestrian access will be maintained, with work areas fully secured.

Image showing service investigation area



Contact us



24-hour Project Infoline **1800 718 556**



kamaywharves@mcdgroup.com



nswroads.work/kamayferrywharves



Kamay Ferry Wharves Project,
Transport for NSW, Community and Place
PO Box K659, Haymarket NSW 1240



Scan to visit the project webpage

www.transport.nsw.gov.au/privacy-statement#Your_Privacy



Interpreter service

For languages other than English call 131 450
Mandarin • Greek • Cantonese • Spanish • French • Arabic

获取英语以外的其他语言口译协助服务可以致电 131 450

Για υπηρεσίες διερμηνείας σε άλλες γλώσσες εκτός από
τα Αγγλικά καλέστε το 131 450

獲取英語以外的其他語言傳譯協助服務可以致電 131 450

Servicio de intérpretes para personas cuyo idioma no es el
inglés, por favor, llame al número 131 450

Pour obtenir les services d'un(e) interprète pour les
langues autres que l'anglais, appelez le 131 450

لطلب خدمة الترجمة الشفهية للغات غير الإنجليزية اتصل
بالرقم 131 450