

More Trains More Services

March 2022

Kiama

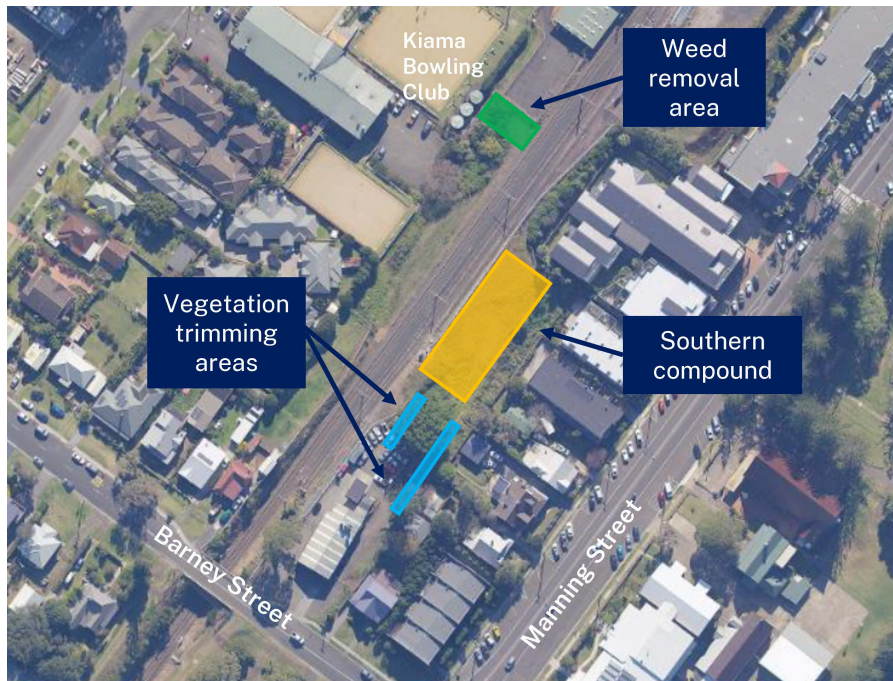
Upcoming work

In our recent community notification, we notified that some vegetation pruning will be required on Sydney Trains land behind the Kiama Smash and Mechanical Repair to facilitate operational requirements.

From **Thursday 17 March**, we will be required to use chainsaws and chipping machines to complete some vegetation trimming (map overleaf). This work will take place within standard construction hours (7am–6pm) and be completed by a qualified arborist over one day. Some minor weed removal will also be required adjacent to the Kiama Bowling Club. Vegetation removal will be undertaken in accordance with Transport for NSW's Vegetation Offset Guide.

We acknowledge residents may notice an increase in noise as a result of these trimming and mulching activities.

This work is required to provide additional access points into the rail corridor and compound, enabling safe movement of plant and vehicles, minimising traffic on local roads and reducing construction noise impacts to residents.



We would like to thank you, our closest neighbours, for your ongoing support as we work to deliver an improved rail network. We apologise for any inconvenience and thank you for your patience while we carry out this important work.

For more information

For more information about our project, please visit yoursay.transport.nsw.gov.au/mtms-kiama, call **1800 684 490** or email projects@transport.nsw.gov.au.

For urgent enquiries or complaints 24 hours please call **1800 775 465**.



Translating and interpreting service

If you need help understanding this information, please contact the Translating and Interpreting Service on **131 450** and ask them to call us on **1800 931**