

## Kingsford to Centennial Park Walking and Cycling Project

### Upcoming work in March and April 2023

Transport for NSW | February 2023

We are continuing the construction work along the project alignment to build the new cycleway. Work includes upgrading the stormwater and drainage system and building new footpaths, kerbs, gutters, pram ramps and driveways.

This notice outlines our work over the next two months between **1 March and 30 April 2023**. The project is expected to be completed by the end of 2023.

#### Upcoming work – standard hours

Our standard construction hours are Monday to Friday, 7am to 6pm and Saturday, 7.30am to 3.30pm. Work is dependant on weather and site conditions and is subject to change.

Please refer to the maps overleaf for detailed locations of upcoming work.

- Complete footpath and roadworks on Doncaster Avenue between Alison Road and Todman Avenue – **up to two weeks work**
- Continue pavement reconstruction, driveway reconstruction and installation of stormwater drainage and kerb and gutters on Doncaster Avenue between Koorinda Avenue and Day Avenue – **up to six weeks work**
- Commence pavement reconstruction, driveway reconstruction and installation of stormwater drainage and kerb and gutters on Doncaster Avenue adjacent to Koorinda Avenue – **up to two months work**
- Constructing new medians on Day Avenue at the intersection of Doncaster Avenue – **up to five days work**
- Continue pavement reconstruction, driveway reconstruction and installation of stormwater drainage and kerb and gutters on Houston Road between Barker Street and Day Avenue – **up to eight weeks work.**

#### Upcoming work – out of hours

Most work will be completed during the day, however, to maintain safety for road users and workers, and to keep people moving on local roads, we need to carry out some of our work outside normal construction hours.

This work will occur up to five nights a week between 7pm and 5am, Sunday to Thursday dependant on weather and site conditions. We do not work public holidays.

The construction activities below will occur outside of standard work hours.

- Commence asphaltting and kerb works on Doncaster Avenue between Abbotford Street and Anzac Parade – **up to 20 nights work**
- Commence standing permanent traffic signals and connections works on Doncaster Avenue at the intersection of Todman Avenue – **up to three nights work**
- Continuing electrical installation work on Doncaster Avenue between Alison Road and Anzac Parade. This will involve switching the overhead power across new telegraph poles as well as private connections. Residents will be notified individually for specific dates and times – **up to ten nights work**
- Constructing new medians on Day Avenue at the intersection of Doncaster Avenue – **up to seven nights work**
- Continue potholing on Bunnerong Road at the intersection of General Bridges Crescent and Sturt Street – **up to ten nights work**
- Implement temporary traffic changes on Houston Road between Barker Street and Strachan Street – **up to two nights of work**
- Start electrical work on Houston Road between Day Avenue and Barker Street – **up to ten nights work**
- Switching Doncaster Avenue to its final traffic alignment – **up to two nights work.**

## Minimising community impact

Our work activities will require the use of machinery that generates noise and vibration. Equipment used for these activities include saw-cutter, excavator, concrete truck, compaction equipment, vacuum truck and excavators.

If work is required out of hours, we will also use mobile lighting towers.

To minimise the impact of this work we will:

- monitor noise periodically so we can manage any potential impacts and adjust our work as required
- fit equipment with devices to minimise noise, particularly non-tonal reversing beepers.

In addition, at night we will also:

- complete the noisiest activities such as saw-cutting and jackhammering by midnight
- direct temporary lighting down and away from houses
- turn off machinery when not in use
- use noise blankets to minimise noise, where feasible.

We will work with residents near this work to minimise impacts.

All work will be carried out in line with project environmental approvals.

## Site compounds

Site compounds were established in 2022 and will continue to be used throughout the project for the storage of materials and equipment, site offices and work amenities.

Our site compounds may be used during our standard and out of hours work and plant and machinery may be in operation during this time.

Currently, our two site compounds are located on Bass Street at the intersection of Anzac Parade and on Houston Road near the intersection of Strachan Street

Scan the QR code to visit the project webpage



## Traffic and pedestrian path changes

There will be temporary lane closures to ensure the safety of road users and workers and temporary changes to parking.


There may be partial footpath closures near our work area and alternative path and signs will be in place.


We may also have detours in place for some of our work. Properties affected by these detours will be notified directly.

Please allow extra travel time, keep to speed limits and follow signs and traffic controller directions. For the latest traffic updates, call 132 701, visit [livetraffic.com](http://livetraffic.com) or download the Live Traffic NSW app.

### Contact us

If you have any questions or would like to sign up for regular email construction updates, please contact our delivery partner, Burton Contractors:

 1800 650 031

 [K2CP-community@burtoncontractors.com.au](mailto:K2CP-community@burtoncontractors.com.au)

 [nswroads.work/k2cp](http://nswroads.work/k2cp)

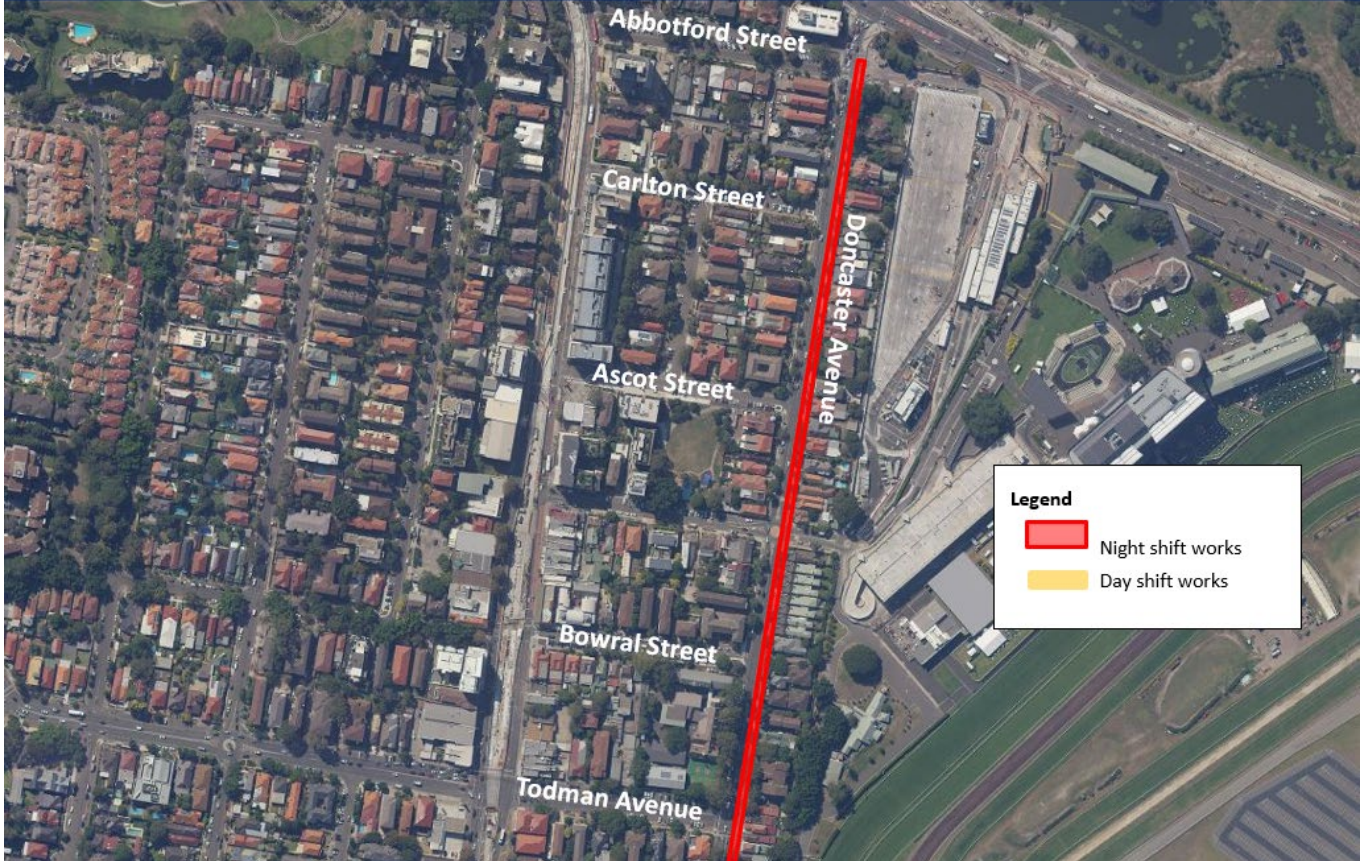
### Translation



If you require the services of an interpreter, please contact the Translating and Interpreting Service on **131 450** and ask them to contact us on 1800 650 031.

We acknowledge the Traditional Custodians of this land, the Bidjigal and Gadigal people, and pay our respect to Elders past and present.

Location of works in Kensington



Location of works in Kensington



Location of works in Kensington and Kingsford



Location of works in Kingsford

