

Lidcombe Infrastructure Upgrade

Transport for NSW | September 2022



Transport for NSW acknowledges the Burramattagal people of the Darug Nation as the Traditional Custodians of the lands on which we work and pay respects to Elders past and present. We recognise & celebrate the diversity of Aboriginal peoples and their ongoing cultures & connections to the lands and waters of NSW.



The More Trains, More Services program will simplify and modernise the rail network creating high capacity, turn up and go services for many customers. The next stages of the program include integrating Sydney Metro City and Southwest into Sydney's train network.

Lidcombe Infrastructure Upgrade

Electrical infrastructure upgrades and track modifications are required to improve train movements through Lidcombe. We will be working within and adjacent to the rail corridor to:

- remove, relocate and reconfigure track and signalling infrastructure
- modify electrical assets and combined service routes, including the removal of high-voltage cables
- upgrade overhead wiring and structures
- improve drainage systems
- complete civil and structural activities to support corridor upgrades.

Upcoming work

A contract has been awarded to Transport for Tomorrow an alliance between Transport for NSW, Laing O'Rourke and KBR, to start early work for the Lidcombe Infrastructure Upgrade project.

Early investigation work will start this month and include:

- environment and safety site walks
- 3D scanning to identify underground services
- underline road crossing (ULX) identification
- identifying existing service routes
- temporary site establishment.

Site compound establishment

In the coming weeks, we will start preparing land within the rail corridor for the installation of site sheds. This work will be carried out during standard construction hours and include clearance of rubbish from existing facilities, vegetation tidying, installation of boundary fencing and site sheds.

The compound may be used outside of standard hours to support approved night and weekend work. We will notify the community in advance of any work that will take place outside standard hours.

There may be some additional traffic movements during the establishment of the site compound and weekend (possession) works. We will try to minimise the impact to the local community, where possible.

For improved safety, visual amenity, and dust containment, this area will be delineated with shade cloth. The shade cloth will be printed with the project contact details to enable members of the community to contact the project team in relation to our activities at this location.

Parking will be available on site inside the rail corridor and is not expected to impact public parking. We will update the community if there will be any parking impacts.

Construction laydown areas

A number of laydown areas where equipment and materials can be stored are required along the rail corridor where works are taking place.

These areas are shown in the map provided. Laydown areas will be utilised until mid-2024.

Standard construction hours

Standard construction hours on this project are **7am until 6pm Monday to Friday and 8am until 1pm on Saturdays.**

Weekend work

Some work is required to take place outside of standard construction hours on this project.

We schedule work outside of standard construction hours to take place during Sydney Trains trackwork periods when no trains are running, minimising disruptions to commuter services and improving the safety of our construction team and customers.

This year, we have work planned outside of standard construction hours in October, from:

6pm Friday 7 October until 7am Monday 10 October

6pm Friday 14 October until 7am Monday 17 October.

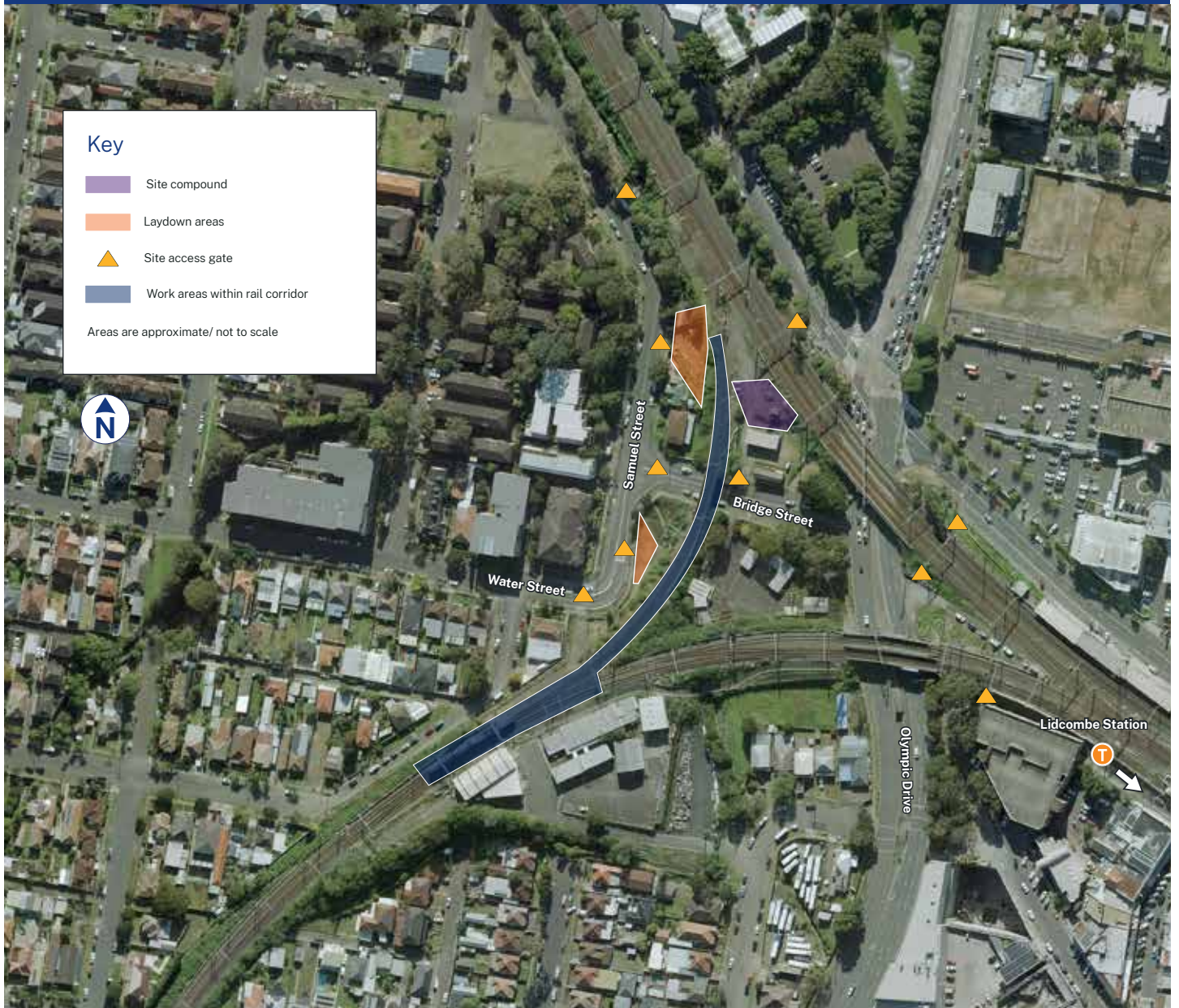
Minimising community impacts

We understand construction activities may cause disruption to our closest neighbours, and every effort will be made to minimise the impacts where possible, including:

- turning off equipment when not in use and using non-tonal reversing alarms to reduce potential noise impacts to the surrounding community
- locating equipment as far away from residents and businesses as possible
- directing lighting away from residents
- installing noise barriers to shield residents from high impact noise activities
- conducting on-site monitoring to ensure compliance with strict environmental conditions relating to noise, vibration and dust management.

We will contact you directly to discuss additional mitigation measures if our work is anticipated to be disruptive at your address.

Lidcombe work areas



Postponed or cancelled work

Due to several factors associated with work in the rail corridor, there is always a possibility that some of our planned work may be postponed or cancelled. We will keep you updated if any planned work is rescheduled.

Other projects in the area

Electrical infrastructure upgrades and track modifications are required to improve train movements through Sefton Park Junction. For more information, please visit the project website:

yoursay.transport.nsw.gov.au/mtms-seftonpark

We are phasing out paper notifications

In 2018, Australia generated 5.9 million tonnes of paper and cardboard waste.

We are committed to integrating sustainable practices into our projects and reducing environmental impacts.

By 2023, we plan to phase out hard copy notifications to residents, unless requested. Instead, we will be digitally distributing construction updates to project-specific email lists.

To help us reduce paper waste, please visit yoursay.transport.nsw.gov.au/mtms-lidcombe or scan the QR code below to complete a 2-question survey and let us know if you would prefer to receive our updates in your inbox instead of your mailbox.

We will continue to remind you of this transition and plan to go entirely digital from January 2023.

If our work is anticipated to directly impact your property and we don't have your contact details, we will still distribute a paper notification to your address to ensure you are aware of upcoming activities.

West of Bankstown rail services in 2024

As part of the integration of Sydney Metro City & Southwest, rail services on the T3 Bankstown Line will change for stations west of Bankstown in 2024.

Services currently operating between Liverpool and the City Circle via Bankstown will instead run via Regents Park and Lidcombe. A shuttle service will operate between Bankstown and Lidcombe, with Regents Park to become the main interchange point for customers switching between the two T3 Bankstown Line branches.

For more information on the planned service changes, please visit: www.transport.nsw.gov.au/projects/current-projects/planning-for-rail-services-west-of-bankstown

Contact us

For more information or to subscribe to project updates:



Project information line: **1800 684 490**



projects@transport.nsw.gov.au



24/7 construction response line: **1800 775 465**



www.transport.nsw.gov.au/mtms



If you need help understanding this information, please contact the Translating and Interpreting Service on **131 450** and ask them to call us on **1800 684 490**

