

M12 Motorway – Central Out of hours work in Kemps Creek and Cecil Park

July 2023



Australian Government



Transport for NSW acknowledges the Dharug people of the Darug Nation as the Traditional Custodians of the lands on which we work and pay respects to Elders past and present.

The Australian and NSW governments are building the M12 Motorway to provide direct access to the Western Sydney International Airport at Badgerys Creek and connect to Sydney's motorway network.

What work are we doing?

Transport for NSW will continue night work over **21 night shifts** between **Saturday 1 July** and **Monday 31 July 2023** along Elizabeth Drive, Clifton Avenue, Salisbury Avenue, Mamre Road, Range Road and Duff Road in Kemps Creek and Cecil Park.

During this period, we will:

- install new communication and power mains
- deliver imported earthworks material to the construction site via Elizabeth Drive, Mamre Road, Range Road and Clifton Avenue
- carry out bridge pile cap and pier reinforcement, formwork and concreting activities at Elizabeth Drive
- deliver, use and remove oversized equipment as required
- deliver and install oversize precast concrete beams
- repair, maintain and install road pavement as required
- carry out stormwater drainage works, landscape maintenance and grass cutting
- deliver and construct concrete batch plant off Clifton Avenue.

These works need to be carried out at night for the safety of our workers and road users and to minimise traffic disruption.

We will continue low impact earthwork and bridge work activities from **6am, Monday to Saturday** across the project. Occasionally, we may need to start from **5am** or finish after **6pm, Monday to Saturdays** to do concrete pours for bridge works as the quality of concrete can be impacted if activities are not continuous or they occur during hot, cold or windy conditions.

The map overleaf shows the location of our work.

Our work schedules

Our night work hours are between **6pm** and **7am**, from **Sunday night** to **Friday morning**. We will not work more than two nights in a row and three nights in a week, in the same location.

Normal work hours are between **7am** and **6pm, Monday to Friday** and between **8am** and **6pm** on **Saturdays**. There will be no work on public holidays.

What equipment will be used?

During the work we may use excavators, compactors, graders, scrapers, piling equipment, concreting equipment, light and heavy vehicles, hand power tools, cranes, vacuum trucks, water carts, sweepers, milling machines, asphalt pavers, bobcats and lighting towers.



How will this work affect you?

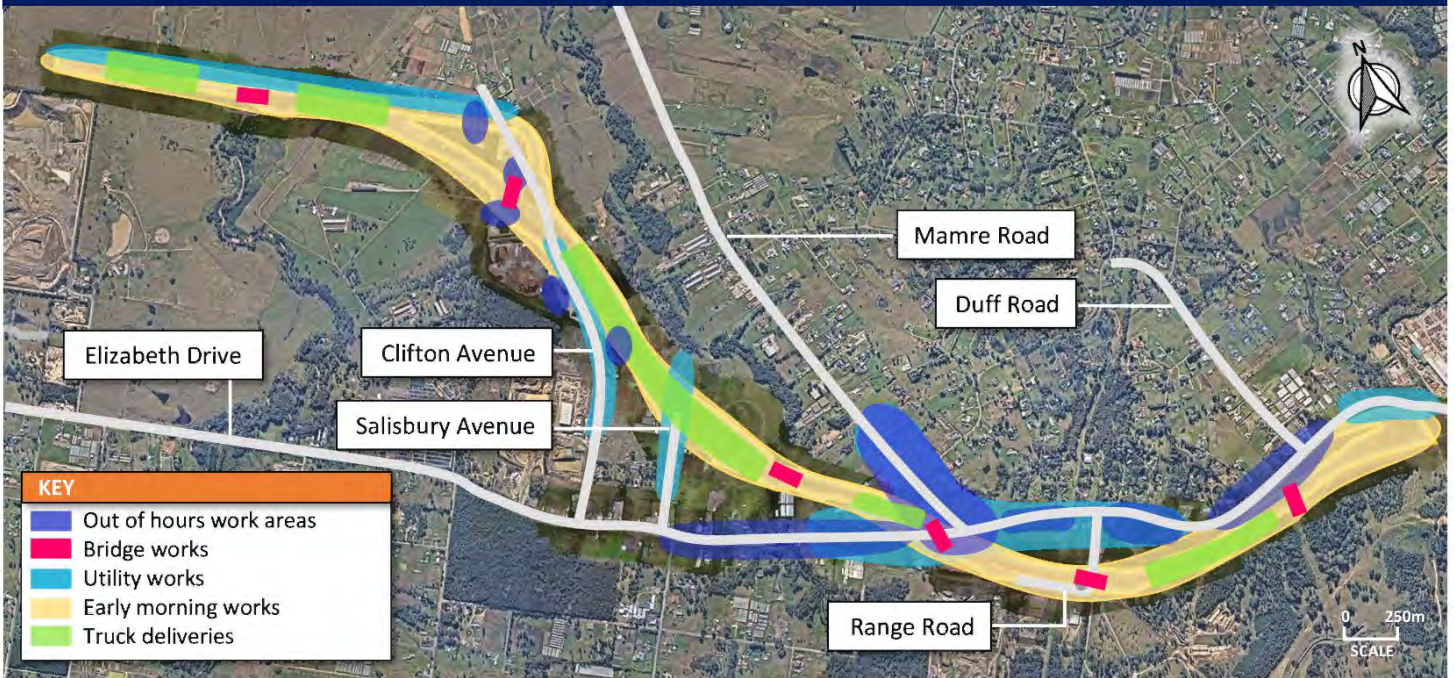
During our work you may see increased activities in the area. The work may be noisy at times, but we will do everything we can to minimise its impact, including completing noisier activities earlier in the night before **midnight**, where possible, and turning off equipment and machinery when not in use.

Traffic changes

There will be temporary traffic changes along the work zone during our work hours to ensure the work zone and traffic are safe while the equipment is used, delivered and removed.

Please keep to speed limits and follow the direction of traffic controllers and signs. For the latest traffic updates, you can call 132 701, visit livetraffic.com or download the Live Traffic NSW app.

Work zones – Elizabeth Drive, Clifton Avenue, Salisbury Avenue, Mamre Road and Duff Road



4 lanes
(up to 6 in the future)



Toll Free



Reduce
cost of congestion



Access
between Airport and M7

Contact us



Project Infoline **1800 517 155**



M12central@seymourwhyte.com.au



nswroads.work/m12



Transport for NSW
PO Box 973, Parramatta NSW 2124



Interpreter service

For languages other than English call 131 450
Arabic • Cantonese • Hindi • Mandarin • Vietnamese

لطلب خدمة الترجمة الشفهية للغات غير الإنجليزية اتصل بالرقم
131 450

獲取英語以外的其他語言傳譯協助服務可以致電**131 450**

अंग्रेज़ी के अतिरिक्त अन्य भाषाओं के लिए दुभाषिया सेवा **131 450**
पर कॉल करें

获取英语以外的其他语言口译协助服务可以致电**131 450**

Để có dịch vụ thông ngôn cho các ngôn ngữ khác tiếng Anh,
gọi số **131 450**



Subscribe for updates at m12motorway@transport.nsw.gov.au

www.transport.nsw.gov.au/privacy-statement#Your_Privacy