

Community Notification – Out of hours work

Regional Rail – Mindyarra Maintenance Centre

August to October 2023



Australian Government



Transport for NSW acknowledges the Tubbagah People of the Wiradjuri Nation as the Traditional Custodians of the lands on which we work and pays respect to Elders past and present.

We are replacing the ageing NSW regional rail fleet of XPT, XPLOER and Endeavour trains.

The new trains will provide improved safety, accessibility, facilities and reliability for customers who travel from many NSW regional centres to Sydney, as well as Canberra, Melbourne and Brisbane.

To support the new fleet, a purpose-built maintenance centre is being constructed in Dubbo. Momentum Trains is delivering the Regional Rail Project on behalf of Transport for NSW.

What work are we doing?

We will carry out work within the Mindyarra Maintenance Centre.

Equipment to be used includes but is not limited to:

- heavy and light vehicles
- excavators
- vibratory roller
- trucks and trailers
- concrete equipment
- water cart
- hand tools

When and where we'll be working

Construction work continues at **Mindyarra Maintenance Centre**, located off **Wingewarra Street**, during standard construction hours.

Some work has been scheduled to take place outside standard construction hours on **Saturdays, Sundays** and **Public Holidays** between **12 August** and **29 October 2023**, weather permitting. This includes:

- **7am to 8am**, and **1pm to 6pm, Saturdays**
- **8am to 6pm, Sundays**
- **8am to 6pm, Monday 2 October** (public holiday)

What will this mean for you?

This work is not expected to be noisy or disruptive, however, you may notice:

- workers and vehicles
- low noise from some of the construction activities

Managing our impacts

Transport for NSW is committed to minimising disruption to the community.

We will take every possible step to reduce noise and impacts on the community and the environment.

This includes and is not limited to:

- using non-tonal reversing beepers
- instructing workers to keep noise to a minimum

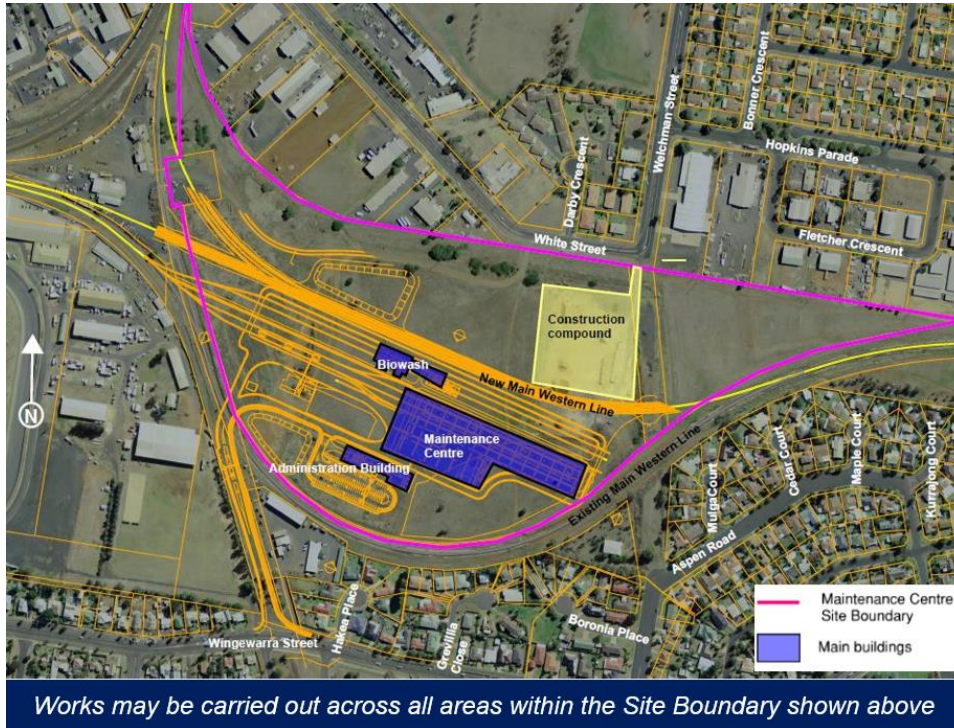
We apologise for any disruption these activities may cause.

Standard construction hours

Standard construction hours for the project are from **7am to 6pm, Monday to Friday**, and **8am to 1pm, Saturday**.



Location of work area



More information

Working closely and effectively with the local community is a priority for Transport for NSW and Momentum Trains. We will keep you up to date about upcoming work, with regular notifications and updates on our website.

If you have questions or concerns or would like more information about the Regional Rail Project, please contact us using the details below.

Contact us



Project Infoline **1800 684 490**
24-hour Construction Response Line
1800 775 465



projects@transport.nsw.gov.au



www.transport.nsw.gov.au/projects/current-projects/regional-rail-mindyarra-maintenance-centre



www.transport.nsw.gov.au/projects/current-projects/regional-rail



For the latest Train services updates:
Call Transport Info on **131 500** or visit
<https://transportnsw.info/>



Interpreter service

For languages other than English call 131 450
Arabic • Greek • Hindi • Mandarin • Vietnamese

طلب خدمة الترجمة الشفهية للغات غير الإنجليزية اتصل
بالرقم **131 450**

Για υπηρεσίες διερμηνείας σε άλλες γλώσσες εκτός από
τα Αγγλικά καλέστε το **131 450**

अंग्रेज़ी के अतिरिक्त अन्य भाषाओं के लिए दुभाषिया सेवा
131 450 पर कॉल करें

获取英语以外的其他语言口译协助服务可以致电**131 450**

Để có dịch vụ thông ngôn cho các ngôn ngữ khác tiếng
Anh, gọi số **131 450**

www.transport.nsw.gov.au/privacy-statement#Your_Privacy