

Mascot Power Supply Upgrade

More Trains, More Services

January 2024



Transport for NSW acknowledges the Gweagal, Bidjigal and Gadigal Clans as the Traditional Custodians of the lands on which we work and pay respects to Elders past and present.

Transport for NSW is upgrading the power supply to support an increase to the number of services operating through the T8 Airport Line tunnel and support the introduction of the new fleet of trains operating along the T8 Airport Rail Line.

What work are we doing?

In January 2024, we will continue electrical work inside the substation at 166 O’Riordan Street and installation of a new 10.5-metre-high fence around the perimeter.

Additionally, we are renewing the landscaping, footpath and driveway at the substation.

When and where we’ll be working

Standard construction hours are between **7am and 6pm Monday to Friday** and **8am and 1pm on Saturdays**.

We’ll be working in the substation site at 166 O’Riordan Street and in the site compound at 200 O’Riordan Street. The map overleaf shows the work locations.

Out of hours work and deliveries

To facilitate the installation of the 10.5-metre-high fence around the substation, some work and deliveries may take place outside of standard construction hours from **10pm Wednesday 10 January to 10pm Monday 30 January 2024**.

Additionally, we will undertake electrical work between 7am to 6pm each Saturday until June 2024 at the substation.

O’Riordan Street pedestrian changes

The footpath on the southern side of O’Riordan Street (between Bourke Road and King Street) will be closed periodically throughout the month of January. This is to allow oversized deliveries to access the work area.

On the days that the footpath is closed, a detour will be in place via the northern side of O’Riordan Street as shown on the map overleaf. Traffic controllers and signage will be in place to direct pedestrians.

What will this mean for you?

In addition to the pedestrian changes, you may also notice:

- workers and vehicles
- noise from machinery and equipment
- traffic controllers.

Managing our impacts

We understand our work may cause disruption to the community. We will seek to minimise impacts as much as possible and follow strict environmental conditions relating to noise, vibration, and dust management.

We would like to thank you for your patience during our work throughout 2023. We will take a break over the holiday period and there will be no construction activities from **6pm Friday 22 December 2023 until 6am Monday 8 January 2024**. During this time, you may notice security guards on site. We wish our neighbours a safe and happy holiday season.





We are going paperless

In case you haven't heard, soon we'll no longer be distributing paper notifications (unless requested) to reduce our environmental impacts. Instead, we will contact you via email when there is work that may impact you.



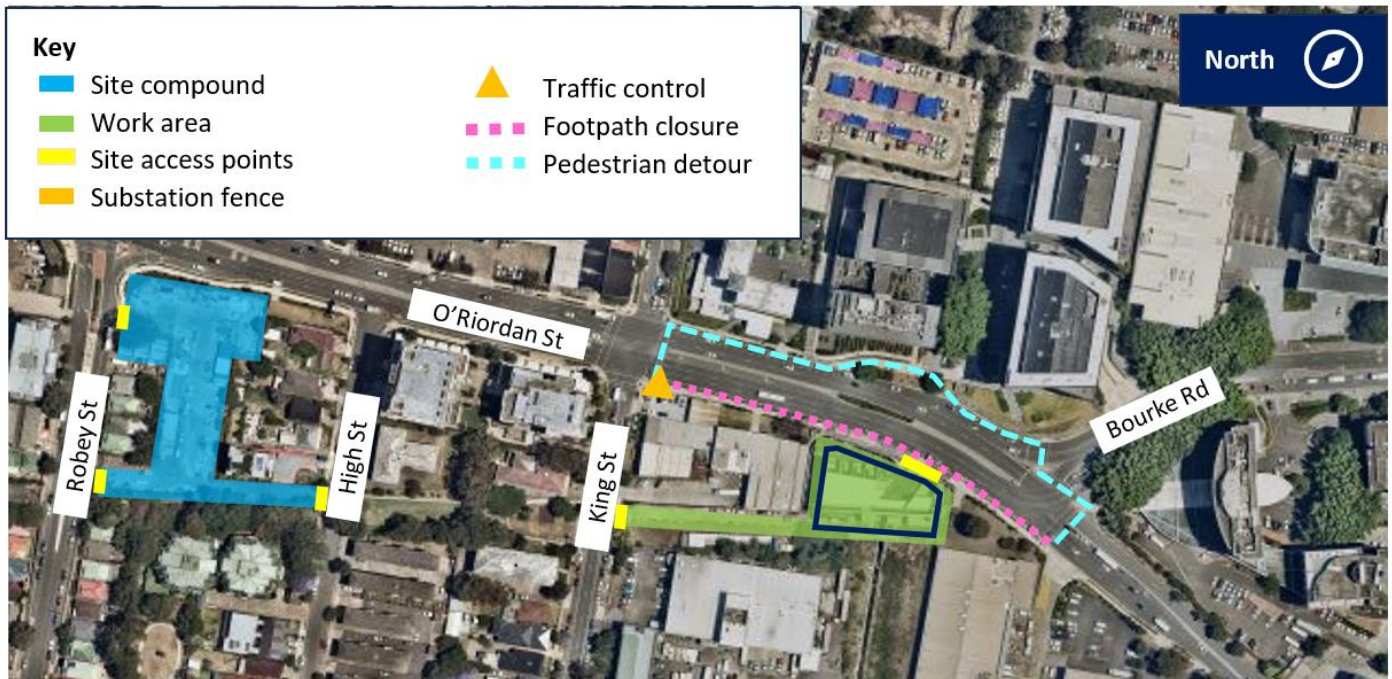
If you haven't already, please scan the QR code and fill out the form to register for email updates.

To continue receiving paper notifications, you can request this via the QR code or call us at **1800 684 490**.

Thank you to residents who have registered already.

Progress photo of the fence installation taken in December 2023. The upper fence will reach 10.5 metres. Installation will continue in January 2024 and is anticipated to be completed in early 2024.

Location of work



Contact us



Project Infoline **1800 684 490**

24-hour Construction Response Line
1800 775 465



projects@transport.nsw.gov.au



yoursay.transport.nsw.gov.au/mtms



Register for email updates



Interpreter service

For languages other than English call 131 450
Arabic • Cantonese • Hindi • Mandarin • Vietnamese
لطلب خدمة الترجمة الشفهية للغات غير الإنجليزية اتصل بالرقم
131 450

獲取英語以外的其他語言傳譯協助服務可以致電**131 450**
अंग्रेज़ी के अतिरिक्त अन्य भाषाओं के लिए दुभाषिया सेवा **131 450**
पर कॉल करें

獲取英語以外的其他語言口譯協助服務可以致電**131 450**
Đề có dịch vụ thông ngôn cho các ngôn ngữ khác tiếng Anh,
gọi số **131 450**