

# Homebush to Strathfield Signalling Upgrade

## More Trains, More Services

February to April 2023

*Transport for NSW pays respect to Elders past and present, and recognises and celebrates the diversity of Aboriginal peoples and their ongoing cultures and connections to the lands and waters of NSW.*

The More Trains, More Services program will simplify and modernise the rail network creating high capacity, turn up and go services for many customers.

This project will upgrade the signalling infrastructure inside the rail corridor between Homebush and Strathfield to improve train movements through the stations.

### What work are we doing?

Essential investigations have been underway since October 2022 to assist with early planning and design. This involves site surveying, locating existing underground services and understanding ground conditions inside the rail corridor.

### When and where we'll be working

Investigation work will continue inside the rail corridor from February to April 2023.

Our site compound off Columbia Lane will be utilised for deliveries, storage of materials and equipment, offices, pre-start work meetings and worker parking.

Standard construction hours are between **7am and 6pm Monday to Friday and 8am and 1pm on Saturdays.**

### Out-of-hours work

Some work will take place outside of standard construction hours from:

- **6am to 6pm on Saturday 11 February and Sunday 12 February 2023**
- **6am to 6pm on Saturday 18 March and Sunday 19 March 2023.**

We schedule work outside of standard construction hours to take place during Sydney Trains trackwork periods when no trains are running, minimising disruptions to commuter services and improving the safety of our construction team and customers.

### What will this mean for you?

You may notice:

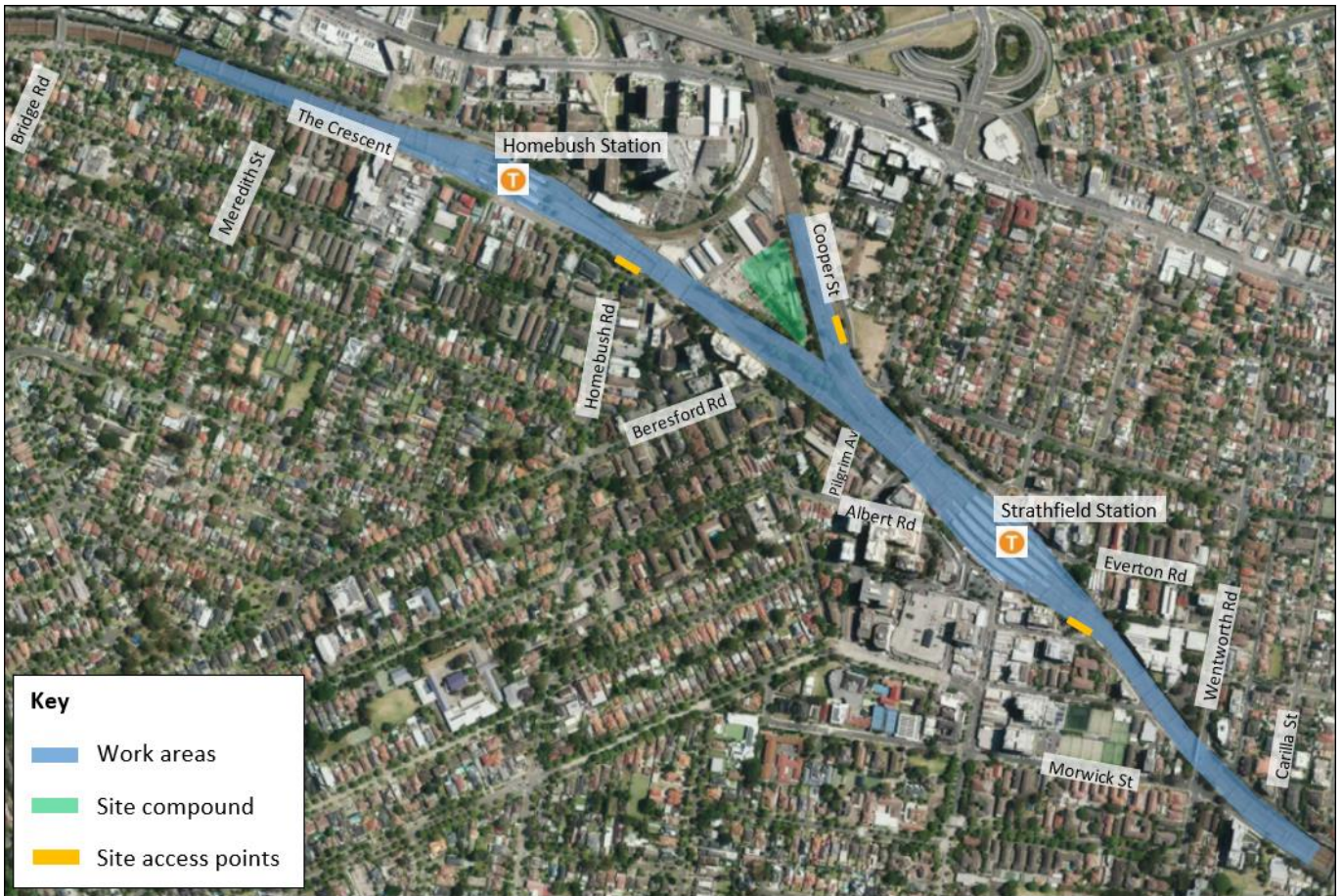
- an increase in workers and vehicles at the site compound and work area
- noise from machinery and equipment.

### Managing our impacts

We understand construction activities may cause disruption for the community. We will seek to minimise impacts as much as possible and adhere to strict environmental conditions relating to noise, vibration and dust management.

Main construction is expected to start later this year and we'll update you regularly about our work as construction progresses.

## Map of work area



## We are going paperless

We are committed to integrating sustainable practices into our projects and reducing environmental impacts.

Soon we will no longer be distributing paper notifications to residents unless requested. Instead, we will be providing construction updates digitally straight to your inbox.



To help us reduce paper waste and to continue receiving these updates, please scan the QR code to subscribe to email updates.

If you wish to continue to receive paper notifications, you can request this via the QR code or by contacting us via the details below.

## Contact us

For more information or to subscribe to project updates:



Project information line: **1800 684 490**



[projects@transport.nsw.gov.au](mailto:projects@transport.nsw.gov.au)



24/7 construction response line: **1800 775 465**



[www.transport.nsw.gov.au/mtms](http://www.transport.nsw.gov.au/mtms)



This document contains important information about public transport projects in your area. If you require the services of an interpreter, please contact the Translating and interpreting Service on **131 450** and ask them to call Transport for NSW on **1800 684 490**. The interpreter will then assist you with translation.