

Newtown to Redfern Signalling Upgrade

More Trains, More Services

November 2023



Transport for NSW acknowledges the Gadigal people of the Eora Nation as the Traditional Custodians of the lands on which we work and pay respects to Elders past and present.

The More Trains, More Services program will simplify and modernise the rail network creating high capacity, turn up and go services for many customers.

This project will upgrade the rail signalling infrastructure between Newtown and Redfern stations to improve train movements through the stations.

What work are we doing?

We will install a new signal gantry inside the rail corridor. The structure will stretch across the railway tracks and carry signals (similar to traffic lights).

Early investigation and preparation work will take place in November 2023, including vegetation removal and excavation work.

Some of the work will involve a vacuum truck. The truck has a pump and a tank and will be stationed at the rail access gate on Copeland Avenue (near the intersection with Watkin Street).

When we'll be working

Standard construction hours are between **7am and 6pm Monday to Friday and 8am and 1pm on Saturdays**.

What will this mean for you?

There will be temporary parking changes on Copeland Avenue as detailed on the right.

You may also notice:

- traffic control
- workers and vehicles
- noise from the vacuum truck and other machinery.

Temporary parking changes on Copeland Avenue

Around nine parking spots (next to the rail corridor) will be temporarily unavailable along the southern side of Copeland Avenue **between 8am and 4pm** from:

- **Monday 6 November to Friday 10 November 2023**
- **Monday 13 November to Friday 17 November 2023***.

This is to ensure there is sufficient room for the vacuum truck to reverse safely up Copeland Avenue (from Burren Street) in the morning and leave in the afternoon.

Residents are welcome to park on the southern side of Copeland Avenue overnight (after 4pm) and on the weekend. However, **please kindly ensure cars are moved to a different location before 8am** on weekdays to ensure a clear path for the reversing truck.

We apologise for any inconvenience this may cause and thank you for your patience.

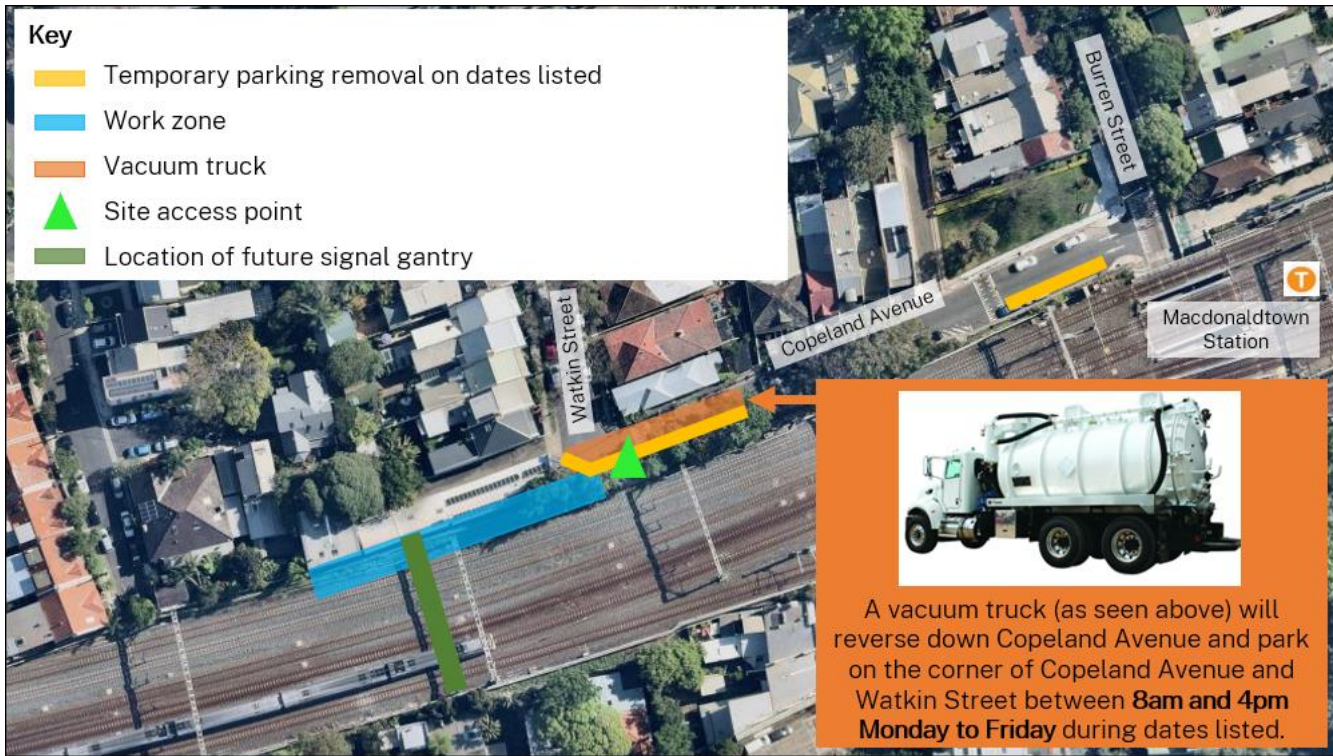
*If the work is completed before Friday 17 November, we will remove all parking signage in the area and the parking lane will return to normal.

Managing our impacts

We understand our work may cause disruption for the community. We will seek to minimise impacts as much as possible and adhere to strict environmental conditions relating to noise, vibration and dust management.



Location of work and parking changes



We are going paperless

Soon we'll no longer be distributing paper notifications (unless requested) to reduce our environmental impacts.

Instead, we will contact you via email when there is work or deliveries that may impact you.



If you haven't already registered, please scan the QR code and fill out the form.

If you wish to continue to receive paper notifications, you can request this via the QR code or call us at 1800 684 490.

Thank you to residents who have already registered.

What's next?

Further work to prepare for the installation of the new signal gantry will take place in December 2023. We will provide further details about this work closer to the time.

Contact us



Project Infoline **1800 684 490**
24-hour Construction Response Line
1800 775 465



projects@transport.nsw.gov.au



yoursay.transport.nsw.gov.au/mtms-newtowntoredfern



Register for email updates



Interpreter service

For languages other than English call 131 450
Arabic • Cantonese • Hindi • Mandarin • Vietnamese
لطلب خدمة الترجمة الشفهية للغات غير الإنجليزية اتصل بالرقم
131 450

獲取英語以外的其他語言傳譯協助服務可以致電**131 450**
अंग्रेज़ी के अतिरिक्त अन्य भाषाओं के लिए दुभाषिया सेवा **131 450**
पर कॉल करें

获取英语以外的其他语言口译协助服务可以致电**131 450**

Để có dịch vụ thông ngôn cho các ngôn ngữ khác tiếng Anh,
gọi số **131 450**