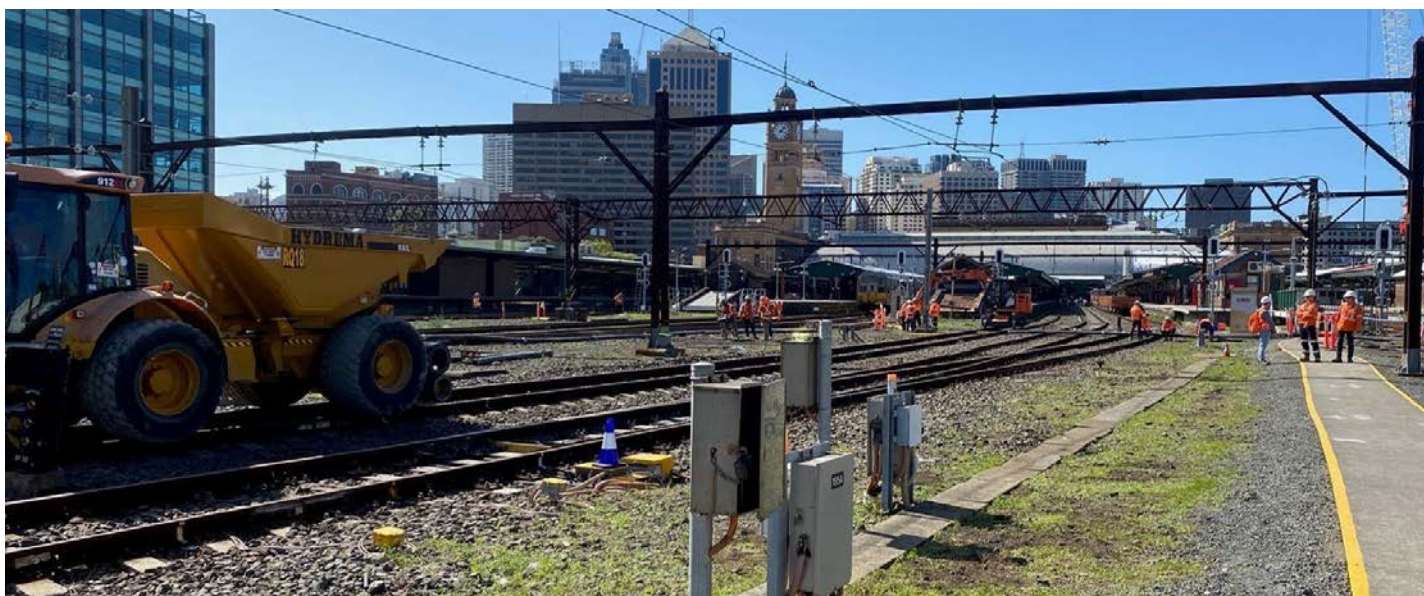


More Trains, More Services

Sydney Terminal Area Reconfiguration Project – Central



What happened in November?

During November, we continued with site investigations and survey work between Sydney Terminal and Macdonaldtown Stabling Yard. The project team established sites for equipment and material storage for efficient work practices and installed a signal distribution box for the T4 line at Eveleigh.

What's planned next?

During December, we will carry out the following activities:

- installation of the overhead wiring portal
- investigate and install the utilities route
- signal installation
- an extension of platforms 9 and 10.

Construction activities will be undertaken during standard construction hours from 7am to 6pm Monday to Friday, and 8am to 1pm on Saturday.

Are there activities planned out of hours?

Some out of hours work is planned to complete the required work. This will take place during a scheduled trackwork period when no trains will be running.

This enables the construction team to safely carry out essential activities inside the rail corridor.

- **2am, Saturday 12 to 2am, Monday 14 December**
- **2am, Saturday 19 to 2am, Monday 20 December**

We will be taking advantage of the quiet train period in December to do extra work.

What does this mean for you?

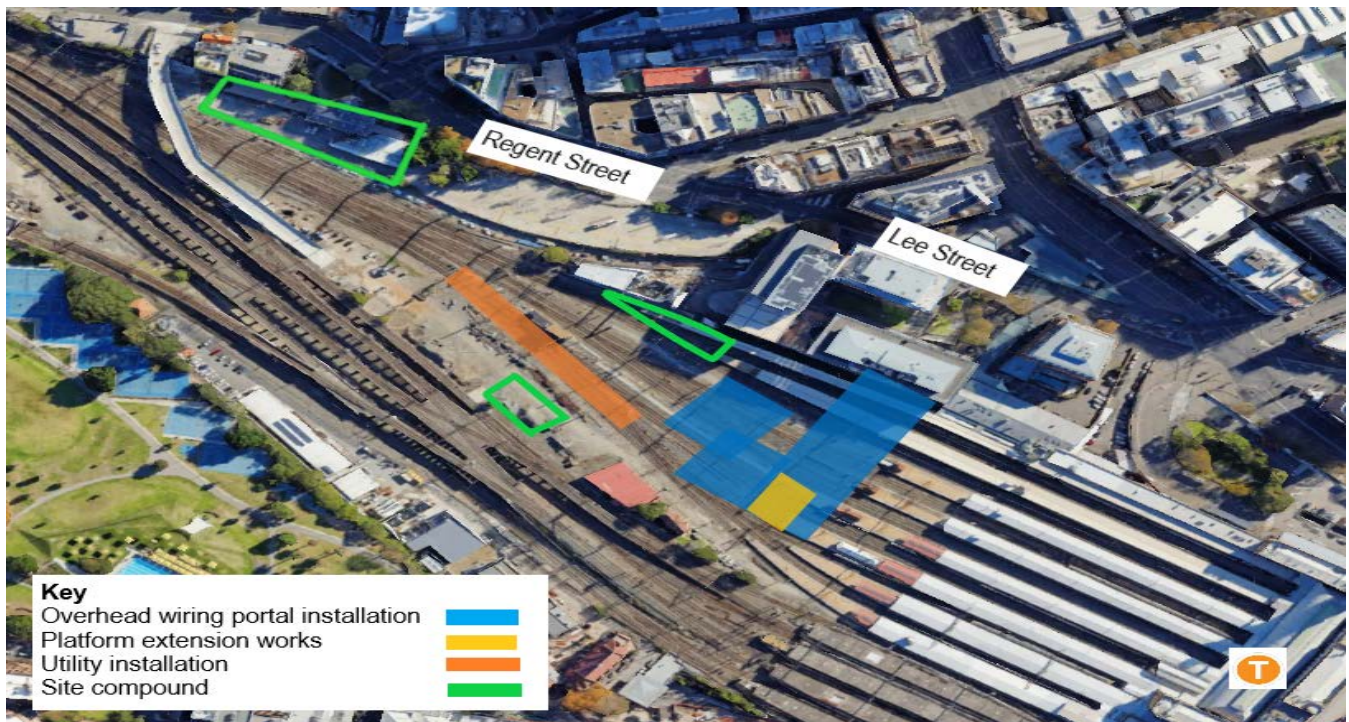
We will be working for five consecutive days and nights:

- **2am, Saturday 26 to 2am, Thursday 31 December**

This work is required to install essential infrastructure that will assist in transforming the rail network along this line in the future.

Environmental assessment indicates that this will be noisy for some residents. We will be contacting those directly impacted by this work.

For up to date information about replacement services during this scheduled trackwork period please visit transportnsw.info or call 131 500.



Where will work take place?

The above map shows the project area inside the rail corridor at Central Station. The project site compound is located at Mortuary Station.

There are a number of other projects working near Central Station on these scheduled trackwork weekends. Residents may notice increased work vehicle movements along local streets as a result of these work activities.

How do we consider the community?

The project team understands construction activities may cause disruption for the community and we will seek to minimise impacts as much as possible.

We will also ensure we adhere to strict environmental conditions relating to noise, vibration and dust management.

How are we staying safe?

We continue to deliver projects across NSW while ensuring the safety of all staff and the community. In line with current Australian Government guidelines around slowing the spread of Coronavirus and social distancing, all work will be carried out at a safe physical distance where possible and necessary hygiene practices will be observed.

Will alternate transport services be running during scheduled track work?

For up to date information about replacement services during this scheduled trackwork period please visit transportnsw.info or call 131 500.

Contact us

For more information or to subscribe for project updates:

 project information line: 1800 684 490

 24/7 construction response line: 1800 775 465

 projects@transport.nsw.gov.au

 www.transport.nsw.gov.au/mtms

Translation



If you require the services of an interpreter, please contact the Translating and Interpreting Service on 131 450 and ask them to contact Transport for NSW on (02) 9200 0200.

An interpreter will assist you with translation.