

More Trains, More Services

Sydney Terminal Area Reconfiguration Project – Central



We're upgrading the rail infrastructure between Sydney Terminal and Erskineville Junction, to support the introduction of the new fleet of trains operating on the South Coast Line which will access platforms 1 to 14 at Central Station.

What has happened lately?

During May and June, we installed overhead wiring infrastructure, completed work on platforms 9 and 10 extensions, removed redundant utilities and installed new drainage, signalling and communications routes.

What's planned next?

In July, we will carry out the following activities:

- removal of overhead wiring structures
- cable route construction
- trackwork
- installation of signalling cables
- drainage installation
- deliveries of infrastructure and materials.

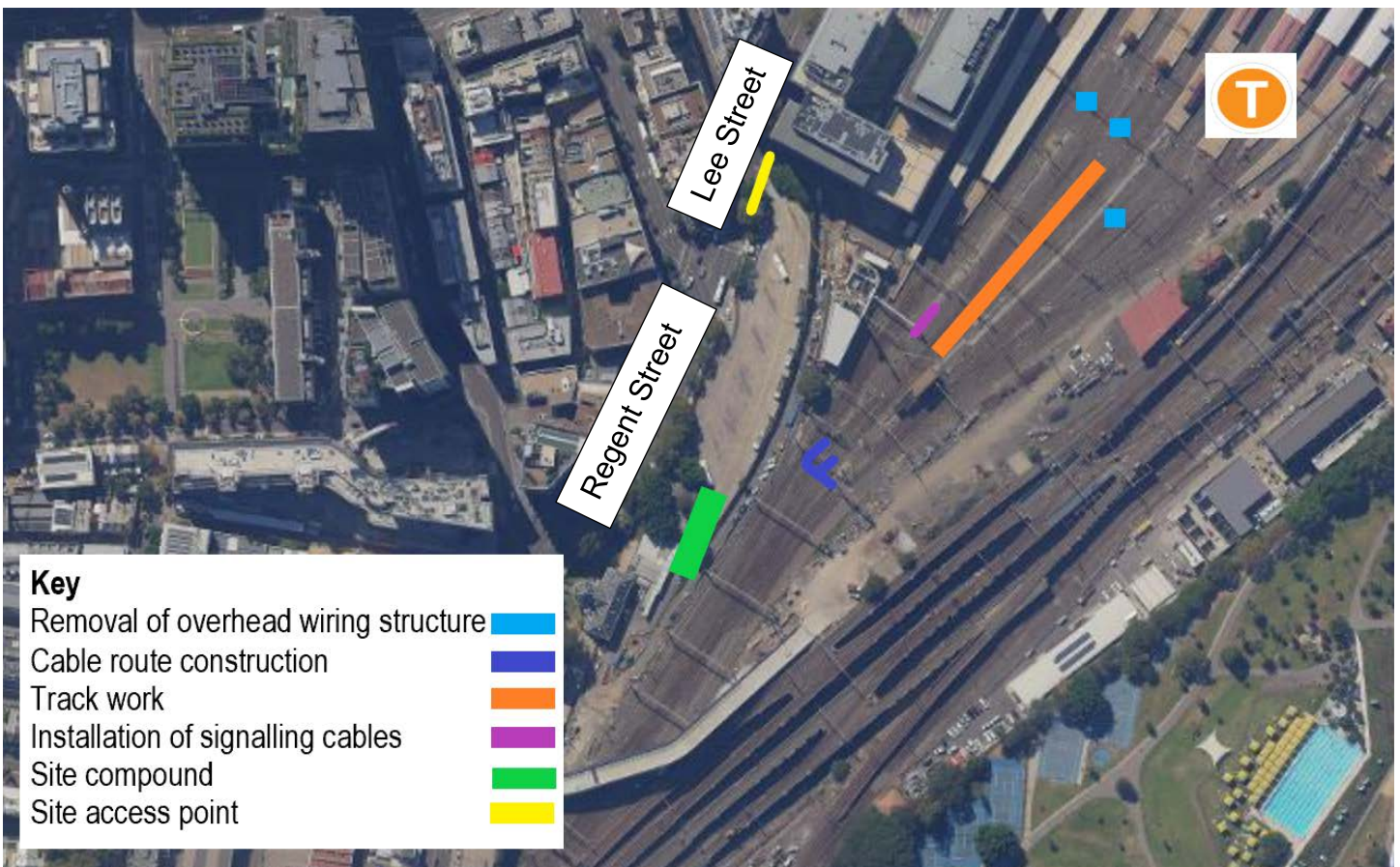
Are there activities planned outside standard construction hours?

To minimise disruption to customers, and to improve the safety of our workers and the community, oversized delivery and pick up of rail infrastructure will take place from **Wednesday 21 July to Friday 23 July (3 nights) between 6pm to 7am.**

Some construction work will also take place outside of standard construction hours inside the rail corridor from **11pm, Friday 23 July to 2am, Monday 26 July.**

This work will take place during a scheduled Sydney Trains trackwork period when no trains will be running. Scheduling construction work outside of standard construction hours enables our construction team to complete essential activities safely.

This work is dependent on weather and site conditions and is subject to change.



Where will work take place?

The above map shows the project area in the Central Station intercity train yard. The project site compound is located at Mortuary Station.

This work is dependent on weather and site conditions and is subject to change.

Alternate transport options

For up to date information about replacement services during this scheduled track work period please visit transportnsw.info or call **131 500**.

How do we consider the community?

The project team understands construction activities may cause disruption for the community and we thank you for your patience as we carry out this work. We will adhere to strict environmental conditions relating to noise, vibration and dust management whilst construction is taking place.

How are we staying safe?

We continue to deliver projects across NSW while ensuring the safety of all staff and the community. In line with current Australian Government guidelines around slowing the spread of Coronavirus and social distancing, all work will be carried out at a safe physical distance where possible and necessary hygiene practices will be observed.

There's a lot of work happening

Multiple project teams from transport agencies are working within the Central rail corridor. For more information on work completed by Sydney Trains, please contact **1300 656 999**, or visit www.transport.nsw.gov.au/sydtraincommunity.

Contact us

For more information or to subscribe for project updates:

 project information line: **1800 684 490**

 **24/7 construction response line:**
1800 775 465

 projects@transport.nsw.gov.au

 www.transport.nsw.gov.au/mtms

Translation



If you require the services of an interpreter, please contact the Translating and Interpreting Service on **131 450** and ask them to contact Transport for NSW on **1800 684 490**.

An interpreter will assist you with translation.