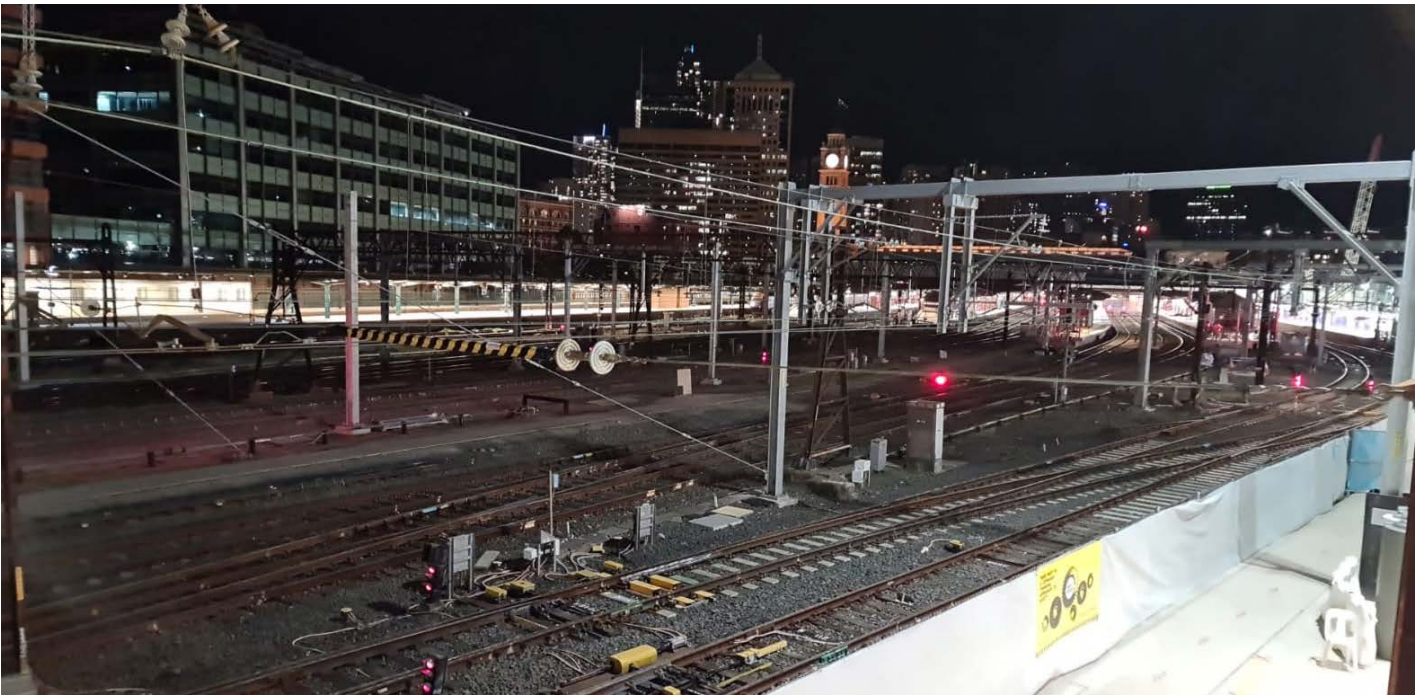


More Trains, More Services

Sydney Terminal Area Reconfiguration Project – Central



We're upgrading the rail infrastructure between Sydney Terminal and Erskineville Junction, to support the introduction of the new fleet of trains operating on the South Coast Line which will access platforms 1 to 14 at Central Station.

What has happened lately?

In April, we installed overhead wiring infrastructure, continued work on platforms 9 and 10, removed and installed drainage and utilities.

What's planned next?

During May and June, we will be carrying out the following activities:

- removal of overhead wiring structures and installation of masts
- completion of work on platforms 9 and 10
- installation of new drainage and service routes
- deliveries of infrastructure and materials.

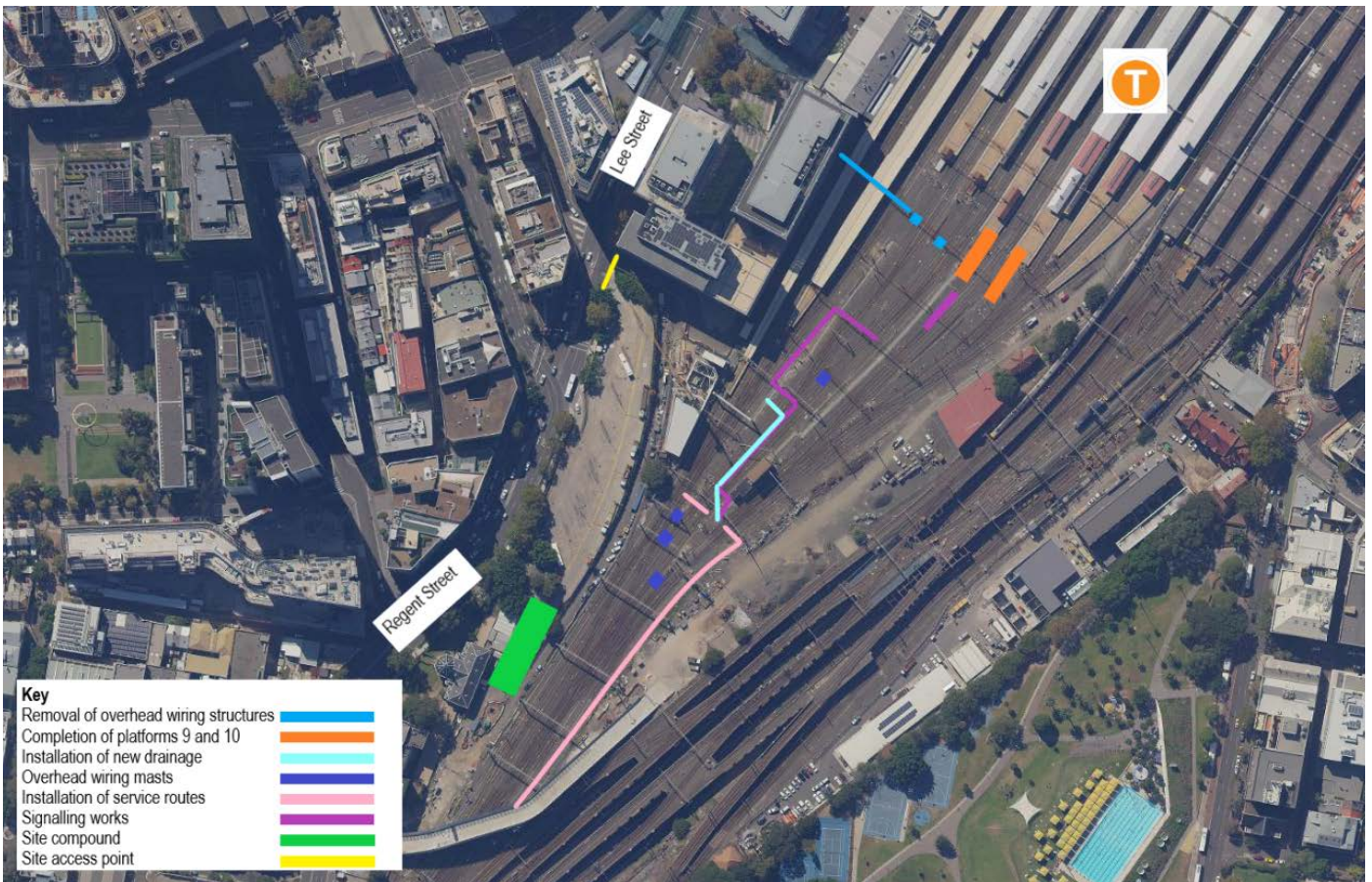
Changes to construction hours

To support the construction industry through Coronavirus, the NSW Government have extended an amendment to the legislation regarding standard construction hours. This amendment enables activities to be carried out between **7am and 6pm on weekdays, weekends and public holidays**. We will always be mindful of the community when planning construction activities to reduce the impact where possible.

Are there activities planned outside standard construction hours?

Work has been scheduled to occur from:

- 2am, Saturday 1 May to 2am, Monday 3 May
- 10pm, Monday 3 May to 7am, Tuesday 4 May
- 2am, Saturday 12 June to 2am, Tuesday 15 June.



How are we carrying out this work?

The Project Team will be removing a redundant overhead wiring structure over tracks 1 to 4 on Saturday 1 to Monday 3 May. This large removal will allow the Project Team to focus on new installations of services and structures for Central Station and rail corridor over the Queen’s Birthday weekend.

This work is dependent on weather and site conditions and is subject to change.

How do we consider the community?

The project team understand our work may cause disruption for the community at times. Scheduling work outside of standard construction hours enables the construction team to safely carry out essential activities inside the rail corridor. Every effort will be made to minimise impacts as much as possible. We will take care to minimise noise as teams enter site via our Lee Street access point. We will also ensure strict adherence to environmental conditions relating to noise, vibration and dust management whilst construction is taking place.

Multiple project teams from transport agencies are working within the Central rail corridor. For more information on work completed by Sydney Trains, please contact 1300 656 999, or visit www.transport.nsw.gov.au/sydneytraincommunity.

Contact us

For more information or to subscribe for project updates:

 project information line: 1800 684 490

 24/7 construction response line:
1800 775 465

 projects@transport.nsw.gov.au

 www.transport.nsw.gov.au/mtms

Translation



If you require the services of an interpreter, please contact the Translating and Interpreting Service on 131 450 and ask them to contact Transport for NSW on 1800 684 490.

An interpreter will assist you with translation.