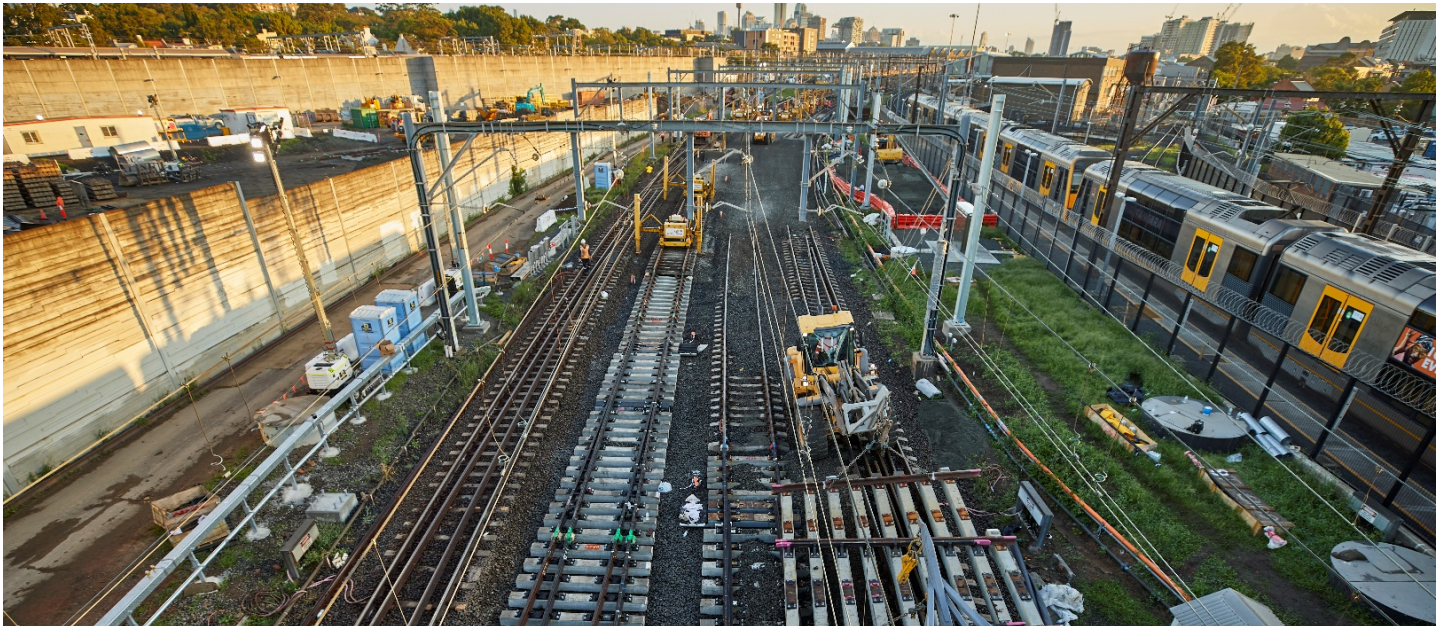


More Trains, More Services

Sydney Terminal Area Reconfiguration Project - Erskineville



We are upgrading the rail infrastructure between Sydney Terminal and Erskineville Junction to simplify and modernise the rail network so that customers can expect more frequent train services in the future.

What happened last month?

During July, we removed and installed overhead wiring infrastructure, installed signalling cables, and constructed cable routes.

What's planned next?

During August, we will carry out the following activities:

- installation of traffic signals
- installation of signalling cables
- signal changeovers
- deliveries and pick up of rail infrastructure.

The signalling work will be carried out on **Saturday 14 August and Sunday 15 August**, between 7am and 6pm.

Are there activities planned outside of standard construction hours?

To minimise disruption to customers, and to improve the safety of workers and the community, oversize delivery and pick up of rail infrastructure and equipment will take place on **Wednesday 25 August and Thursday 26 August (2 nights) between 6pm and 7am**.

This work is dependent on weather and site conditions and is subject to change.

How do we consider the community?

The project team understands construction activities may cause disruption for the community and we thank you for your patience as we carry out this work. We will adhere to strict environmental conditions relating to noise, vibration and dust management whilst construction is taking place.



Where will work take place?

The above map shows the project area inside the rail corridor at Eveleigh including both work site compounds. The site access points are on Swanson Street and Railway Parade.

How are we staying safe?

In line with recent restrictions introduced by the NSW Government on 17 July 2021 to help keep our communities safe, construction activities on the Sydney Terminal Area Reconfiguration Project are paused until Friday 30 July. We are making arrangements for our work activities to safely recommence from 31 July 2021, as detailed in this notification. Should these restrictions change based on advice by the NSW Government, which may impact the timing of our work, the community will be notified. We encourage you to subscribe to our project email distribution for the latest information, by calling us on 1800 684 490 or emailing projects@transport.nsw.gov.au

There's a lot of work happening

Currently there are multiple project teams, transport agencies and contractors working within the Erskineville rail corridor. For more information on work being completed by Sydney Trains, please phone **1300 656 999**, or visit www.transport.nsw.gov.au/sydtraincommunity

Contact us

For more information or to subscribe for project updates:

 **project information line: 1800 684 490**

 **24/7 construction response line: 1800 775 465**

 **projects@transport.nsw.gov.au**

 **www.transport.nsw.gov.au/mtms**

Translation



If you require the services of an interpreter, please contact the Translating and Interpreting Service on **131 450** and ask them to contact Transport for NSW on **1800 684 490**.

An interpreter will assist you with translation.