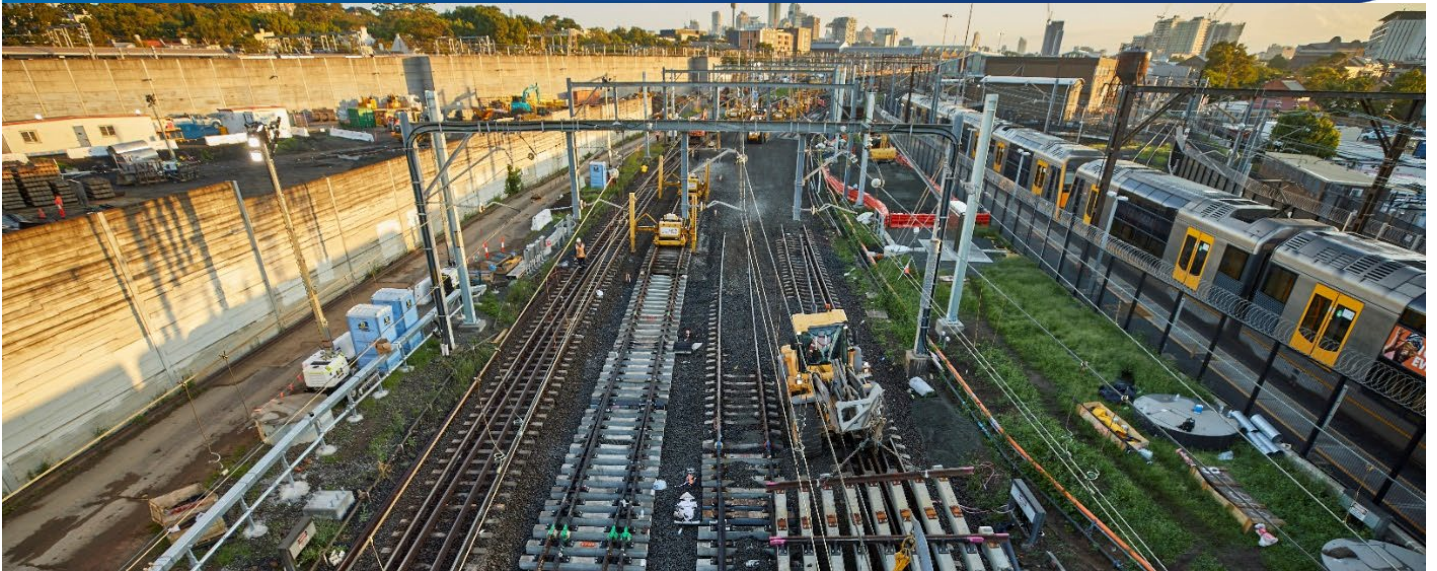


More Trains, More Services

Sydney Terminal Area Reconfiguration Project - Erskineville



What are we doing in Erskineville?

We are upgrading the rail infrastructure between Sydney Terminal and Erskineville Junction to simplify and modernise the rail network so that customers can expect more frequent train services in the future.

What happened last month?

During November, we upgraded and installed new electrical and signalling infrastructure, and carried out cable route construction.

What's planned next?

Through December and into January 2022 we will upgrade, install and commission new electrical, signalling and overhead wiring infrastructure. As part of the electrical work, we will dig a trench along the rail access road near Burren Street.

When will construction take place?

To support the construction industry through the COVID-19 pandemic, the NSW Government has extended an amendment to the legislation regarding standard construction hours. This amendment enables activities to be carried out between **7am and 6pm Monday to Sunday and public holidays**.

Some construction work will take place outside of these hours from:

- **5am Saturday 11 December through to 10pm Sunday 12 December**
- **2am Sunday 26 December through to 10pm Thursday 30 December**

This work will take place during scheduled Sydney Trains trackwork periods when no trains will be running. Scheduling construction work outside of standard construction hours enables our team to complete essential activities safely.

How are we staying safe?

In line with current Australian Government guidelines around slowing the spread of COVID-19 the site will have a dedicated COVID-19 Marshall to ensure all people entering the site are safe to enter the site (as per current NSW Health guidelines) and all necessary hygiene practices will be observed.

The project team would like to thank you for your patience during our works throughout 2021 and we wish you and your family a safe and happy holiday season.



Where will work take place?

The above map shows the work areas inside the rail corridor, along rail access road near Burren Street and our site compounds. The site access points are on Swanson Street and Railway Parade.

The project team will utilise the site compounds for storage of materials and equipment, pre-start work meetings and worker parking.

All work is dependent on weather and site conditions and is subject to change.

How do we consider the community?

The project team understands construction activities may cause disruption for the community. We will seek to minimise impacts as much as possible and adhere to strict environmental conditions relating to noise, vibration and dust management.

Contact us

For more information or to subscribe for project updates:

 project information line: 1800 684 490

 24/7 construction response line: 1800 775 465

 projects@transport.nsw.gov.au

 www.transport.nsw.gov.au/mtms

Translation



If you require the services of an interpreter, please contact the Translating and Interpreting Service on 131 450 and ask them to contact Transport for NSW on 1800 684 490.

An interpreter will assist you with translation.

Construction work and alternative transport options over the holiday period

In addition to the Sydney Terminal Area Reconfiguration Project work at Erskineville, other transport agencies and contractors will be working in Erskineville over the holiday period, including:

- **Erskineville Station Upgrade.** For more information, please phone 1800 684 490 or visit: www.transport.nsw.gov.au/projects/current-projects/erskineville-station-upgrade.

- **Sydney Trains** will carry out signalling work from 26 – 31 December. For more information, please phone 1300 656 999 or visit: www.transport.nsw.gov.au/sydtraincommunity

Buses will replace trains from 2am Saturday 26 December to 10am Friday 31 December.

For more information about replacement services, please visit transportnsw.info or call 131 500.