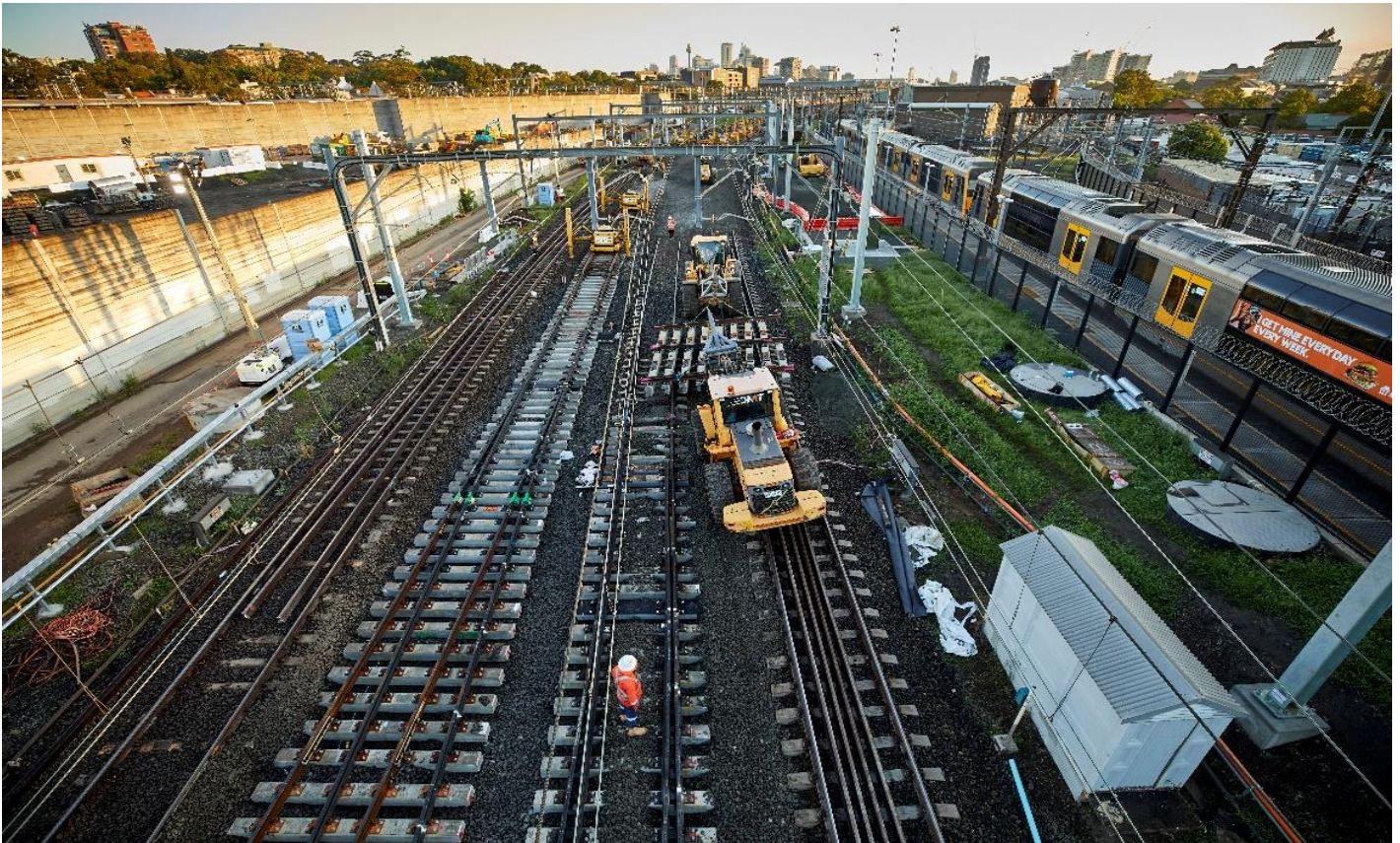


More Trains, More Services

Sydney Terminal Area Reconfiguration Project - Erskineville



What happened in December?

During December, we were busy installing overhead wiring masts, trenching for utilities, and removed and replaced a major portion of track in the Erskineville rail corridor.

We would like to thank the residents of Erskineville for their patience and support during the trackwork possession from 26 to 31 December 2020. Photographs of our work during this time can be seen on pages three and four, and we'll be updating the project webpage in the coming weeks with some interesting timelapse footage showing our progress on site during this time.

What's planned next?

During January and February, we will carry out the following activities:

- installation of drainage
- installation of culverts for drainage
- reinforcement of electrical and signal footings
- install overhead wiring masts
- install configuration wiring
- signal upgrades
- oversized material deliveries.



Where will work take place?

The above map shows the project area inside the rail corridor in Eveleigh including both site compounds. The site access points are on Swanson Street and Railway Parade.

When will construction occur?

Preparatory construction activities will be undertaken during standard construction hours from 7am to 6pm Monday to Friday, and 8am to 1pm on Saturday. Some major construction will need to occur out of hours when no trains are running.

How are we staying safe?

We continue to deliver projects across NSW while ensuring the safety of all staff and the community. In line with current Australian Government guidelines around slowing the spread of Coronavirus and social distancing, all work will be carried out at a safe physical distance where possible and necessary hygiene practices will be observed.

Are there activities planned out of hours?

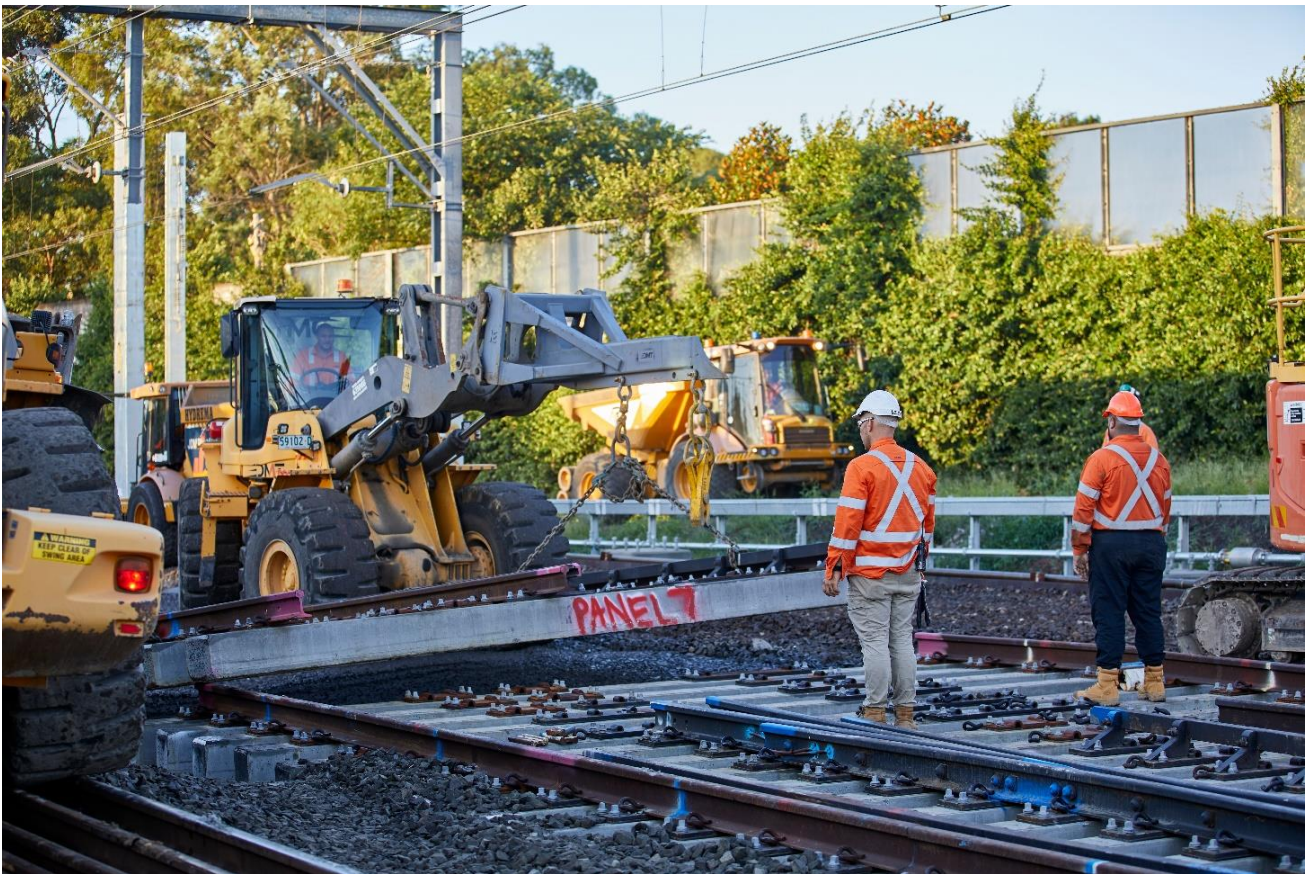
Some out of hours work is planned to complete the required work. These works are taking place during a scheduled trackwork period when no trains will be running. This enables the construction team to safely carry out essential activities inside the rail corridor.

- 5am, Saturday 30 January to 2am, Monday 1 February
- 6pm, Wednesday 3 to 7am, Thursday 4 February
- 5am, Saturday 20 to 2am, Monday 22 February.

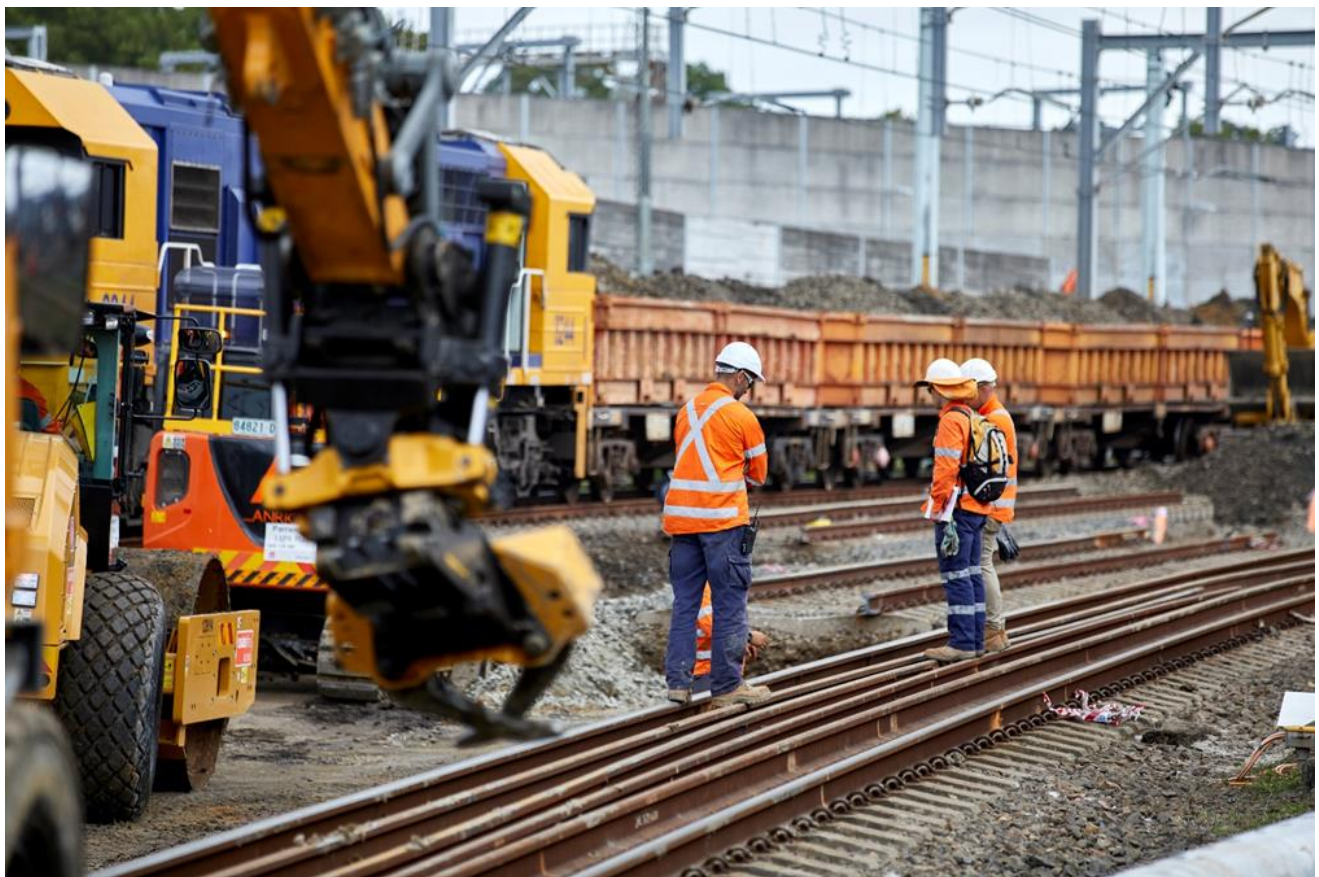
We will be contacting residents directly who may be impacted by this work. These works are dependent on weather and site conditions and are subject to change.

Will alternate transport services be running during scheduled track work?

For up to date information about replacement services during this scheduled trackwork period please visit transportnsw.info or call 131 500.



Installation of utilities for signalling



Track replacement





Installation of track

How do we consider the community?

The project team understands construction activities may cause disruption for the community and we will seek to minimise impacts as much as possible.

When carrying out our trackwork, the Project Team utilises a noise assessment of the programmed activities to determine which properties will be offered alternative accommodation and respite vouchers.

In December 2020, the Project Team worked with local community businesses to provide quality respite options for impacted residents and we will continue to do so. We would like to extend our thanks to those businesses for their support and their positive relationship with our project.

We will continue to ensure we adhere to strict environmental conditions relating to noise, vibration and dust management.

Contact us

For more information or to subscribe for project updates:

 project information line: 1800 684 490

 24/7 construction response line:
1800 775 465

 projects@transport.nsw.gov.au

 www.transport.nsw.gov.au/mtms

Translation



If you require the services of an interpreter, please contact the Translating and Interpreting Service on 131 450 and ask them to contact Transport for NSW on (02) 9200 0200.

An interpreter will assist you with translation.

About More Trains, More Services

Over the next ten years the More Trains, More Services program will simplify and modernise the rail network so that customers can expect more frequent train services, with less wait times, less crowding and more seats on a simpler, more reliable network.