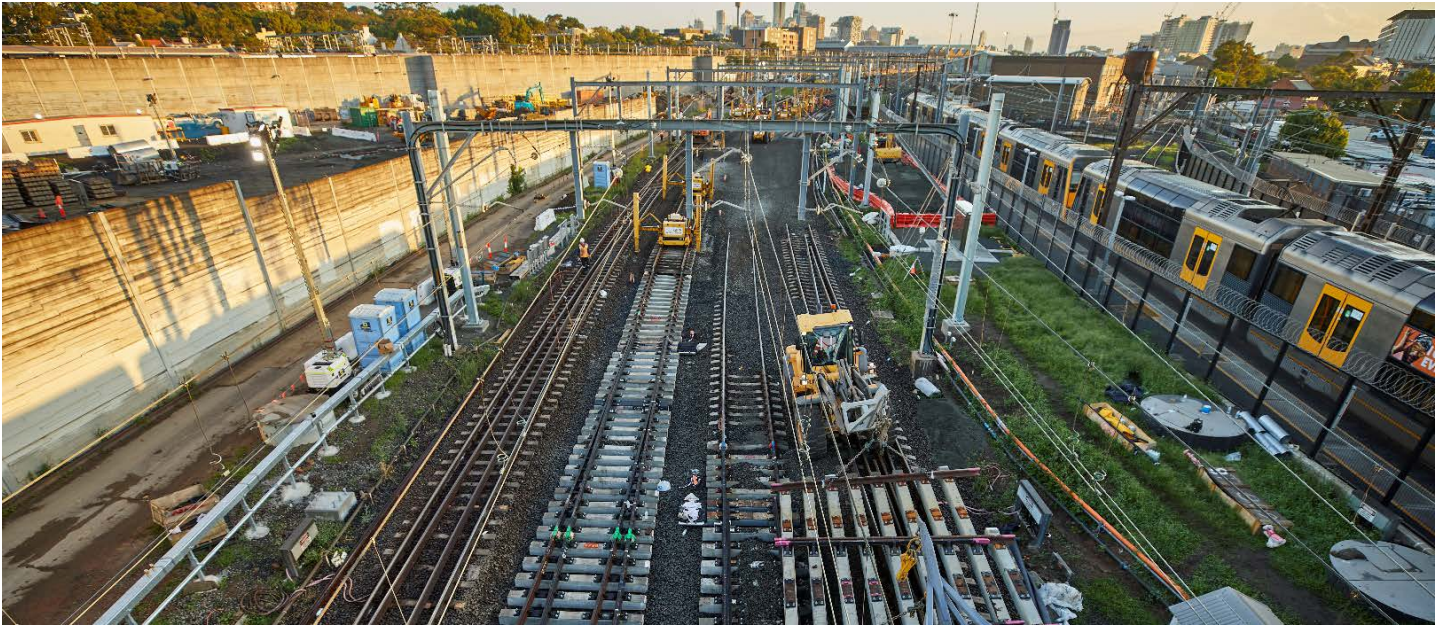


More Trains, More Services

Sydney Terminal Area Reconfiguration Project - Erskineville



We're upgrading the rail infrastructure between Sydney Terminal and Erskineville Junction to simplify and modernise the rail network so that customers can expect more frequent train services in the future.

What happened last month?

During June, we removed redundant overhead wiring, installed new electrical and signalling infrastructure and constructed cable routes.

What's planned next?

During July, we will carry out the following activities:

- removal and installation of overhead wiring infrastructure
- installation of signalling
- construction of cable route
- deliveries of infrastructure and materials.

Are there activities planned outside of standard construction hours?

To minimise disruption to customers, and to improve the safety of workers and the community, oversize delivery and pick up of rail infrastructure and equipment will take place from **Wednesday 14 July to Friday 16 July (3 nights) between 6pm and 7am**. Some construction work will also be completed outside of standard construction hours inside the rail corridor from **5am Saturday 17 July to 2am Monday 19 July**.

This work will take place during a scheduled Sydney Trains trackwork period when no trains will be running. Scheduling construction work outside of standard construction hours enables our construction team to complete essential activities safely.

This work is dependent on weather and site conditions and is subject to change.



Key

- Overhead wiring structure work
- Track work
- Signalling installations
- Cable route construction
- Site compounds
- Site access points

Where will work take place?

The above map shows the project area inside the rail corridor at Eveleigh including both work site compounds. The site access points are on Swanson Street and Railway Parade.

Alternate transport options

For up to date information about replacement services during this scheduled track work period please visit transportnsw.info or call **131 500**.

How do we consider the community?

The project team understands construction activities may cause disruption for the community and we thank you for your patience as we carry out this work. We will adhere to strict environmental conditions relating to noise, vibration and dust management whilst construction is taking place.

How are we staying safe?

We continue to deliver projects across NSW while ensuring the safety of all staff and the community. In line with current Australian Government guidelines around slowing the spread of Coronavirus and social distancing, all work will be carried out at a safe physical distance where possible and necessary hygiene practices will be observed.

There's a lot of work happening

Currently there are multiple project teams, transport agencies and contractors working within the Erskineville rail corridor. For more information on work completed by Sydney Trains, please phone **1300 656 999**, or visit www.transport.nsw.gov.au/sydtraincommunity

Contact us

For more information or to subscribe for project updates:

project information line: 1800 684 490

24/7 construction response line: 1800 775 465

projects@transport.nsw.gov.au

www.transport.nsw.gov.au/mtms

Translation



If you require the services of an interpreter, please contact the Translating and Interpreting Service on **131 450** and ask them to contact Transport for NSW on **1800 684 490**.

An interpreter will assist you with translation.