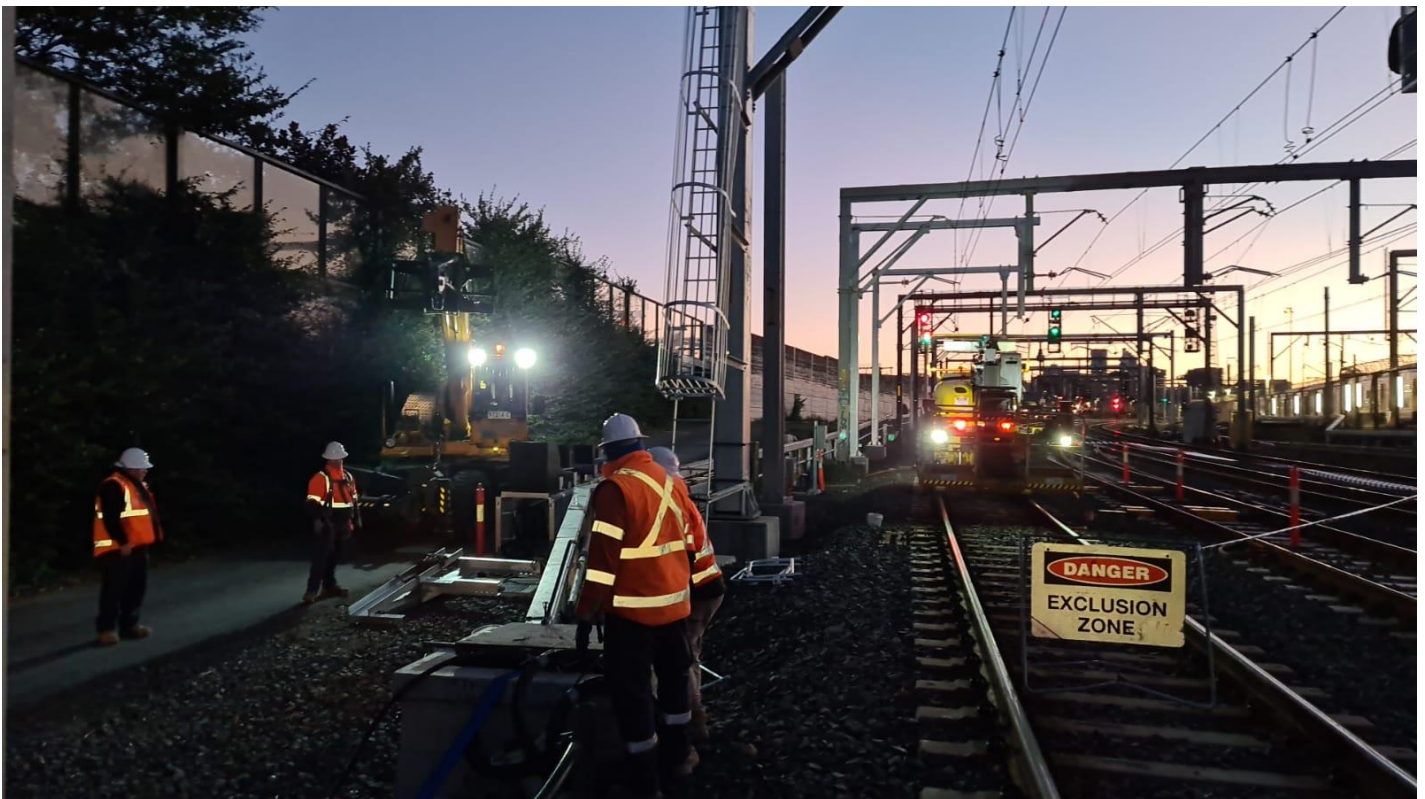


More Trains, More Services

Sydney Terminal Area Reconfiguration Project - Erskineville



We're upgrading the rail infrastructure between Sydney Terminal and Erskineville Junction to simplify and modernise the rail network so that customers can expect more frequent train services in the future.

What happened last month?

During May, we installed overhead wiring infrastructure support, strengthened signalling structures and undertook work to prepare for the relocation of utility cables.

What's planned next?

During June, we will carry out the following activities:

- installation and maintenance of overhead wiring infrastructure
- cable route construction
- installation of signalling signage.

Are there activities planned outside of standard construction hours?

Work has been scheduled to occur from:

- **2am Saturday 26 June to 2am Monday 28 June.**

This work will take place during a scheduled Sydney Trains trackwork period when no trains will be running. Scheduling construction work outside of standard construction hours enables our construction team to complete essential activities safely inside the rail corridor.

Alternate transport options

For up to date information about replacement services during this scheduled track work period please visit transportnsw.info or call **131 500**.



Where will work take place?

The above map shows the project area inside the rail corridor at Eveleigh including both work site compounds. The site access points are on Swanson Street and Railway Parade.

The work is dependent on weather and site conditions and is subject to change.

How do we consider the community?

The project team understands construction activities may cause disruption for the community and we thank you for your patience as we carry out this work. We will adhere to strict environmental conditions relating to noise, vibration and dust management.

About More Trains, More Services

Over the next ten years the More Trains, More Services program will simplify and modernise the rail network so that customers can expect more frequent train services, with less wait times, less crowding and more seats on a simpler, more reliable network.

There's a lot of work happening

Currently there are multiple project teams, transport agencies and contractors working within the Erskineville rail corridor.

For more information on work completed by Sydney Trains, please contact **1300 656 999**, or visit www.transport.nsw.gov.au/sydtraincommunity

Contact us

For more information or to subscribe for project updates:

 project information line: 1800 684 490

 24/7 construction response line: 1800 775 465

 projects@transport.nsw.gov.au

 www.transport.nsw.gov.au/mtms

Translation



If you require the services of an interpreter, please contact the Translating and Interpreting Service on **131 450** and ask them to contact Transport for NSW on **1800 684 490**.

An interpreter will assist you with translation.