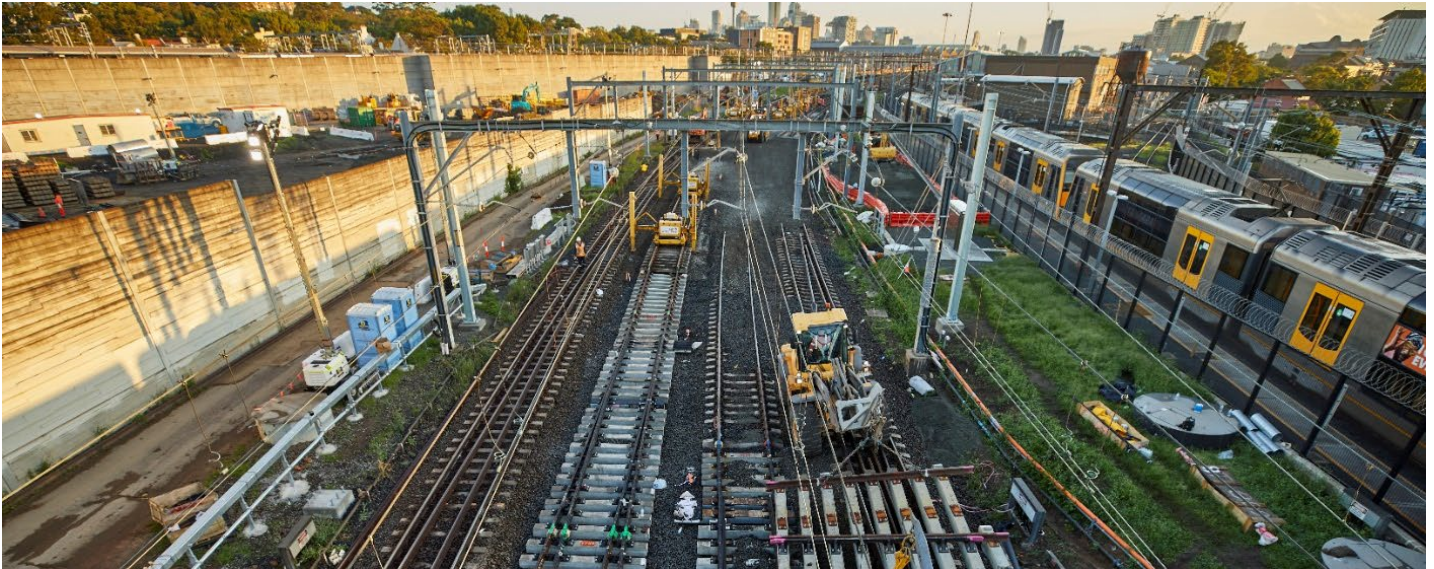


More Trains, More Services

Sydney Terminal Area Reconfiguration and DC Feeder Projects



What are we doing in Erskineville?

We are upgrading the rail infrastructure between Sydney Terminal and Erskineville Junction to simplify and modernise the rail network so that customers can expect more frequent train services in the future.

We are also improving power delivery to the railway network and replacing electrical cables and wiring infrastructure.

What happened last month?

During October, we upgraded and installed new electrical and signalling infrastructure.

What's planned next?

In November, we will continue with electrical and signalling installation work inside the rail corridor and carry out cable route construction inside our Railway Parade site compound. We will also install cable trays and a service line beneath the rail line.

The project teams will utilise the site compounds for storage of materials and equipment, pre-start work meetings and worker parking.

When will construction take place?

To support the construction industry through the COVID-19 pandemic, the NSW Government has extended an amendment to the legislation regarding standard construction hours. This amendment enables activities to be carried out between **7am and 6pm Monday to Sunday and public holidays**.

Some construction work will take place outside of these hours between:

- **5am Saturday 13 November through to 10pm Sunday 14 November** and
- **5am Saturday 27 November through to 10pm Sunday 28 November**.

This work will take place during a scheduled Sydney Trains trackwork period when no trains will be running. Scheduling construction work outside of standard construction hours enables our project team to complete essential activities safely.

All work is dependent on weather and site conditions and is subject to change.



Where will work take place?

The above map shows the project area inside the rail corridor at Eveleigh and our site compounds. The site access points are on Swanson Street and Railway Parade.

How are we staying safe?

We continue to deliver projects across NSW while ensuring the safety of all staff and the community.

In line with current Australian Government guidelines around slowing the spread of Coronavirus the site will have a dedicated Covid Marshall to ensure all people entering the site have been tested for Covid-19 and are safe to enter the site (as per current NSW Health guidelines) and all necessary hygiene practices will be observed.

About More Trains, More Services

Over the next ten years the More Trains, More Services program will simplify and modernise the rail network so that customers can expect more frequent train services, with less wait times, less crowding and more seats on a simpler, more reliable network.

There's a lot of work happening

Currently there are multiple project teams, transport agencies and contractors working within the Erskineville rail corridor. For more information on work being completed by Sydney Trains, please phone **1300 656 999**, or visit www.transport.nsw.gov.au/sydtraincommunity.

Contact us

For more information or to subscribe for project updates:

-  **project information line: 1800 684 490**
-  **24/7 construction response line: 1800 775 465**
-  **projects@transport.nsw.gov.au**
-  **www.transport.nsw.gov.au/mtms**

Translation


131 450

If you require the services of an interpreter, please contact the Translating and Interpreting Service on **131 450** and ask them to contact Transport for NSW on **1800 684 490**.

An interpreter will assist you with translation.

