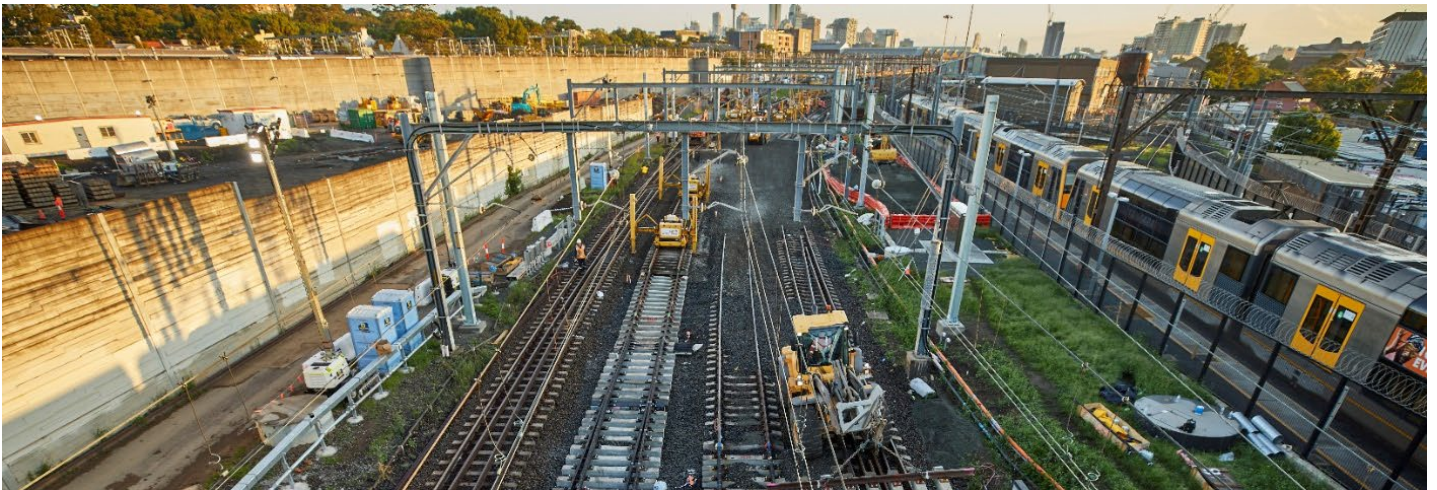


More Trains, More Services

Sydney Terminal Area Reconfiguration Project - Erskineville



What are we doing in Erskineville?

We are upgrading the rail infrastructure between Sydney Terminal and Erskineville Junction to simplify and modernise the rail network so that customers can expect more frequent train services in the future.

What happened last month?

During September, we upgraded and installed new electrical infrastructure, installed signalling equipment and carried out cable route construction.

What's planned next?

In October, we will continue with electrical and signalling installation work inside the rail corridor. We will also utilise the site compounds for storage of materials and equipment, pre-start work meetings, worker parking and for assembly of rail tracks.

When will construction take place?

To support the construction industry through the COVID-19 pandemic, the NSW Government has extended an amendment to the legislation regarding standard construction hours.

This amendment enables activities to be carried out **between 7am and 6pm Monday to Sunday and public holidays.**

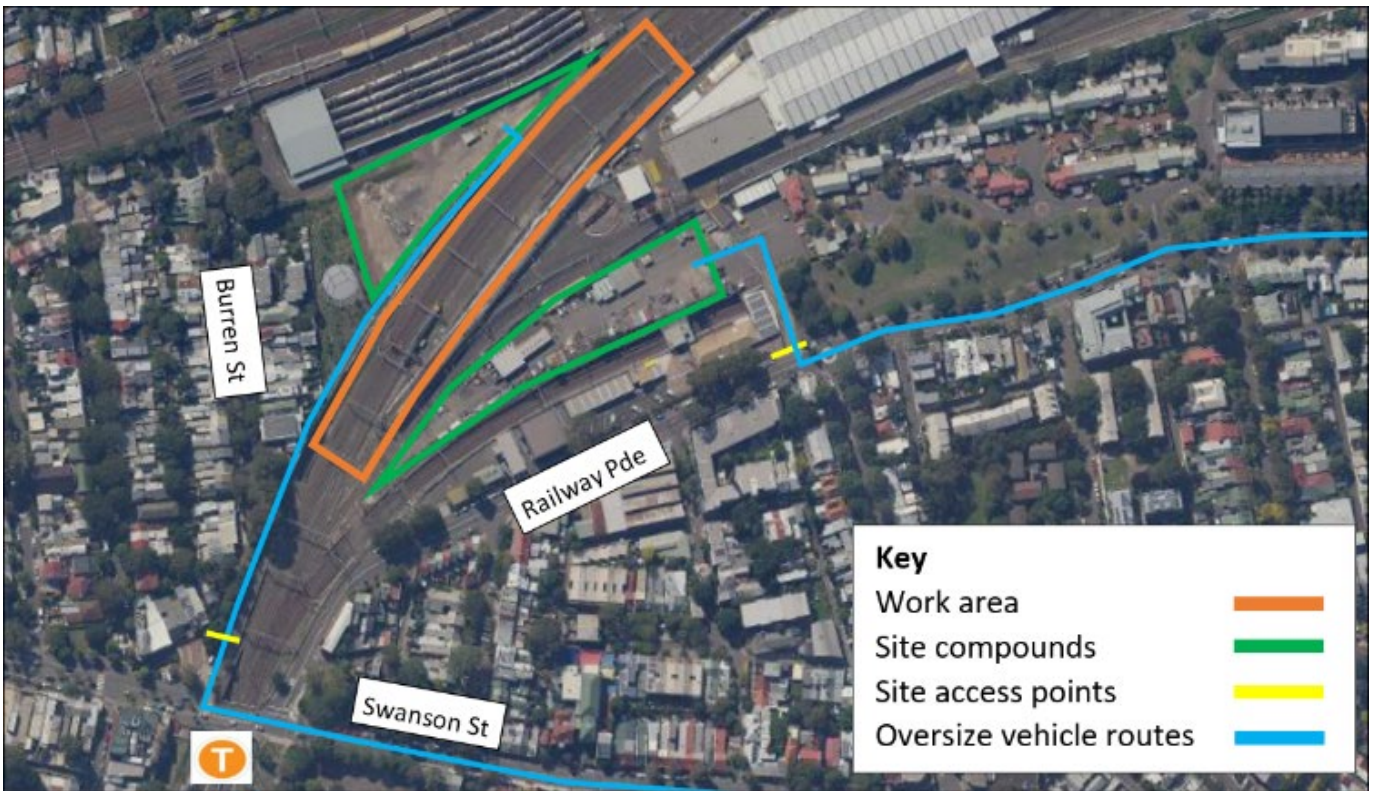
Some construction work will take place outside of these hours between **5am Saturday 9 October through to 11pm Sunday 10 October.**

This work will take place during a scheduled Sydney Trains trackwork period when no trains will be running. Scheduling construction work outside of standard construction hours enables our construction team to complete essential activities safely.

To minimise disruption to customers, and for the safety of our workers and the community, oversize delivery and pick up of rail infrastructure will also take place at night between **7pm and 6am** on the following dates:

- **Tuesday 12 to Sunday 17 October (6 nights)**
- **Wednesday 20 and Thursday 21 October (2 nights)**
- **Tuesday 26 to Sunday 31 October (6 nights)**

Completion of all work is dependent on a number of factors including workforce availability due to the current Covid19 NSW Health guidelines, weather and site conditions and is subject to change. For updates visit our website at www.transport.nsw.gov.au/mtms email us at projects@transport.nsw.gov.au or call us on **1800 684 490.**



Where will work take place?

The above map shows the project area inside the rail corridor at Eveleigh and our site compounds. The site access points are on Swanson Street and Railway Parade.

How are we staying safe?

In line with current Australian Government guidelines around slowing the spread of Coronavirus the site will have a dedicated Covid Marshall to ensure all people entering the site have been tested for Covid-19 and are safe to enter the site (as per current NSW Health guidelines).

Masks will be worn at all times, and where possible all work will be carried out at with a 1.5m physical distance and all necessary hygiene practices will be observed.

There's a lot of work happening

Currently there are multiple project teams, transport agencies and contractors working within the Erskineville rail corridor. For more information on work being completed by Sydney Trains, please phone **1300 656 999**, or visit www.transport.nsw.gov.au/sydtraincommunity

About More Trains, More Services

Over the next ten years the More Trains, More Services program will simplify and modernise the rail network so that customers can expect more frequent train services, with less wait times, less crowding and more seats on a simpler, more reliable network.

Contact us

For more information or to subscribe for project updates:

-  project information line: 1800 684 490
-  24/7 construction response line: 1800 775 465
-  projects@transport.nsw.gov.au
-  www.transport.nsw.gov.au/mtms

Translation

 If you require the services of an interpreter, please contact the Translating and Interpreting Service on **131 450** and ask them to contact Transport for NSW on **1800 684 490**.

An interpreter will assist you with translation.

