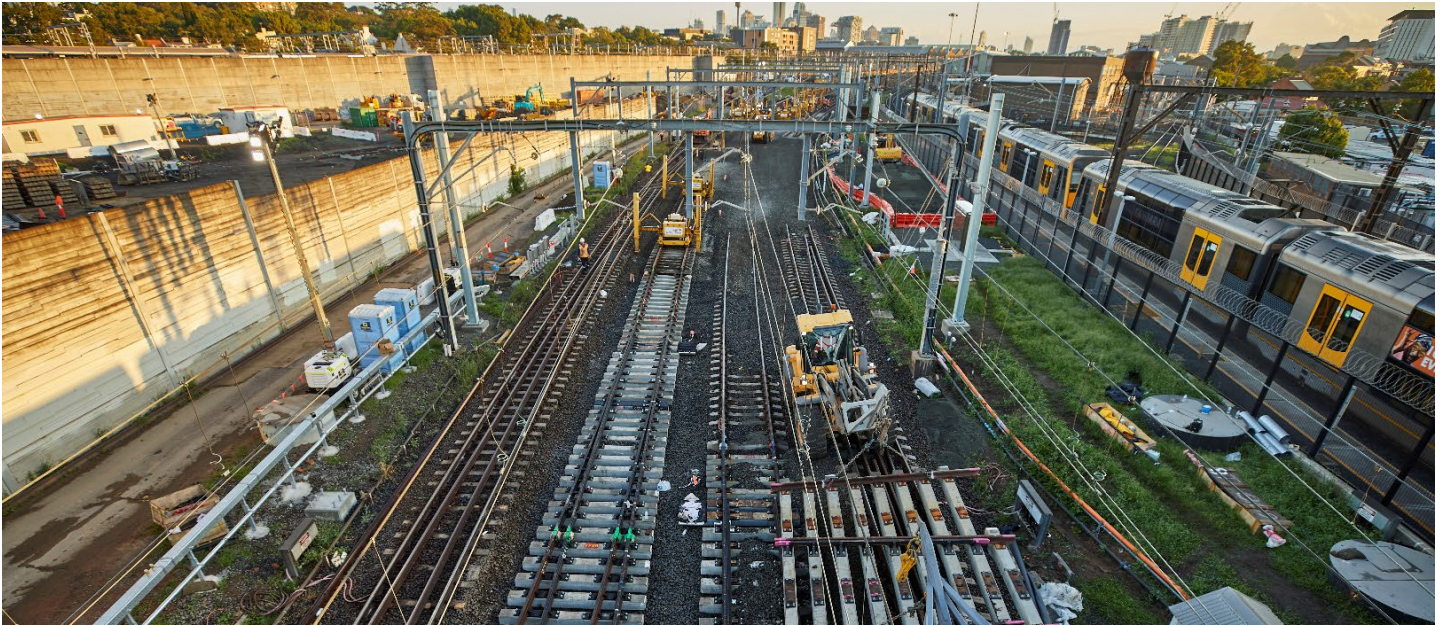


More Trains, More Services

Sydney Terminal Area Reconfiguration Project - Erskineville



What are we doing in Erskineville?

We are upgrading the rail infrastructure between Sydney Terminal and Erskineville Junction to simplify and modernise the rail network so that customers can expect more frequent train services in the future.

What happened last month?

During August, we installed signalling cables and other signaling infrastructure.

What's planned next?

In September, we will carry out the following activities:

- cable route construction; and
- signalling equipment installation.

When will construction take place?

Standard construction hours are 7am to 6pm Monday to Friday and 8am to 1pm on Saturdays.

The NSW Government has allowed construction sites to work extended hours across weekends and public holidays (to 6pm on Saturdays and 7am-6pm

on Sundays and public holidays) throughout the COVID-19 pandemic. These extended work hours enable the construction industry to practice appropriate social distancing with fewer workers on site on any given day by allowing work to be spread across more days in the week.

Are there activities planned outside of standard construction hours?

Some construction work will also take place outside of standard construction hours inside the rail corridor from **5am, Saturday 11 September through to 2am, Monday 13 September.**

This work will take place during a scheduled Sydney Trains trackwork period when no trains will be running. Scheduling construction work outside of standard construction hours enables our construction team to complete essential activities safely. This work is dependent on weather and site conditions and is subject to change.

Should this work be impacted based on advice by the NSW Government, the community will be notified.



Where will work take place?

The above map shows the project area inside the rail corridor at Eveleigh including both work site compounds. The site access points are on Swanson Street and Railway Parade.

How are we staying safe?

We continue to deliver projects across NSW while ensuring the safety of all staff and the community.

In line with current Australian Government guidelines around slowing the spread of Coronavirus the site will have a dedicated Covid Marshall to ensure all people entering the site have been tested for Covid-19 and are safe to enter the site (as per current NSW Health guidelines), masks will be worn at all times, and where possible all work will be carried out at with a 1.5m physical distance and all necessary hygiene practices will be observed.

About More Trains, More Services

Over the next ten years the More Trains, More Services program will simplify and modernise the rail network so that customers can expect more frequent train services, with less wait times, less crowding and more seats on a simpler, more reliable network.

There's a lot of work happening

Currently there are multiple project teams, transport agencies and contractors working within the Erskineville rail corridor. For more information on work being completed by Sydney Trains, please phone **1300 656 999**, or visit www.transport.nsw.gov.au/sydtraincommunity

Contact us

For more information or to subscribe for project updates:

 project information line: 1800 684 490

 24/7 construction response line: 1800 775 465

 projects@transport.nsw.gov.au

 www.transport.nsw.gov.au/mtms

Translation



If you require the services of an interpreter, please contact the Translating and Interpreting Service on **131 450** and ask them to contact Transport for NSW on **1800 684 490**.

An interpreter will assist you with translation.