

More Trains, More Services

Sydney Terminal Area Reconfiguration Project Drainage upgrade work at Eveleigh

Transport for NSW | June and July 2022

What are we doing?

We're upgrading the rail infrastructure between Sydney Terminal and Erskineville Junction to support the introduction of the new fleet of trains operating on the South Coast Line. This includes upgrading the drainage system within the rail corridor at Eveleigh to prevent future flooding and improve reliability across the network.

What's been happening?

In June the project team reached a major milestone when they completed excavation of a 90 metre long drainage tunnel beneath the rail corridor and successfully extracted the micro-tunnel boring machine out of the ground upon completion. We thank the community for their patience during this work.

What's planned next?

From **Monday 27 June**, we will start construction of a 50 centimetre high retaining wall near the Paint Shop (located next to Carriageworks) that will divert excessive rainwater from flowing into the rail corridor. The water retained by the wall will feed into a new drainage pipe that will be installed and connected to the existing drainage system in the area. This work will take up to **four months** to complete and will be carried out during standard construction hours.



Flooding event in the Illawarra Dive tunnels at Eveleigh. Work is underway to improve drainage system in the area and prevent future flooding in the rail corridor.

transport.nsw.gov.au

When will work take place?

Standard construction hours are **7am to 6pm Monday to Friday and 8am to 1pm on Saturdays**.

Upcoming out of hours work

In addition to work near the Paint Shop, we will commence installation of new drainage pipes beneath 320 metres of track inside the Illawarra Dive tunnels located in the rail corridor. This work will involve removing sections of track, installing new drainage pipes and reinstating track.

To complete the work safely, it will take place during scheduled Sydney Trains trackwork periods when no trains will be running.

The work is expected to take around **ten weekends** to complete, with three weekends of work planned in July:

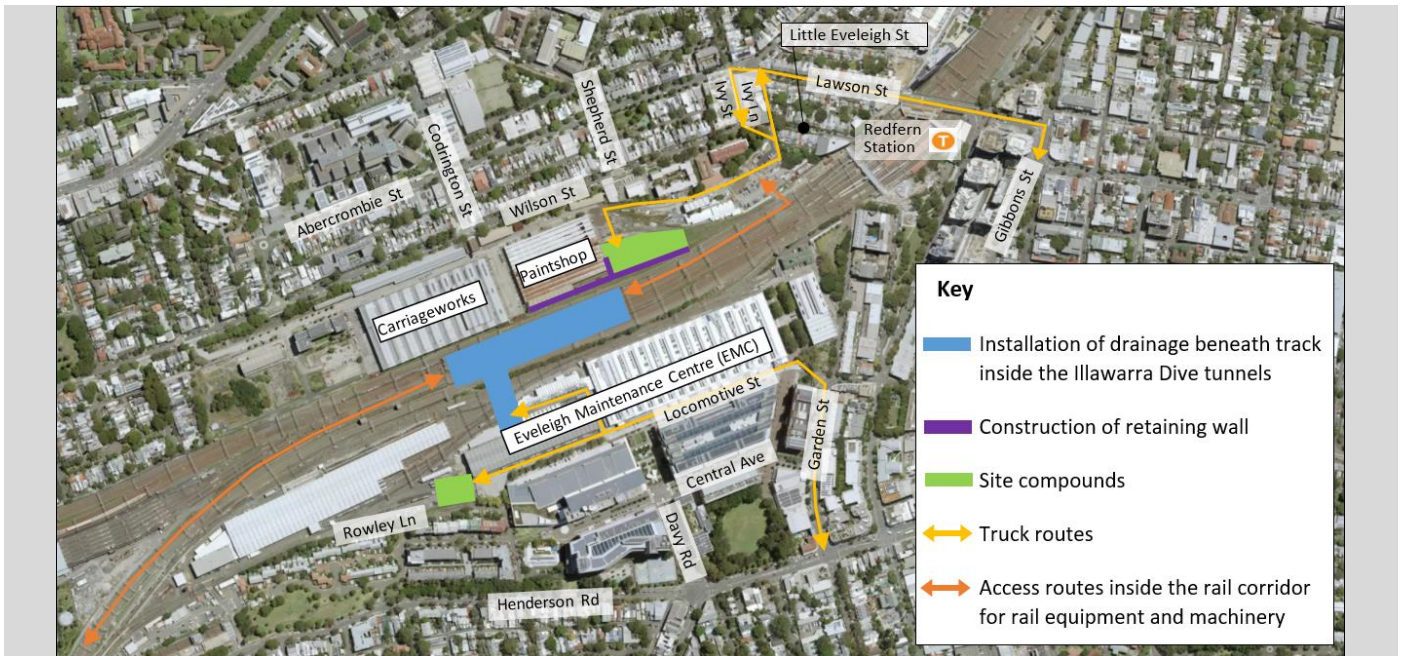
- **Between 10pm Friday 1 July through to 2am on Monday 4 July**
- **Between 10pm Friday 8 July through to 2am Monday 11 July**
- **Between 10pm Friday 22 July through to 2am Monday 25 July**

Please note that the out of hours work in July may be cancelled due to external factors. To register for digital project updates, including changes to planned work, email projects@transport.nsw.gov.au with 'Progress updates MTMS' as the subject line and include your name and address.

Deliveries

As part of the upcoming work there will be deliveries of equipment and materials. The site access points are at the intersection of Ivy Lane and Little Eveleigh Street in Redfern, and on Locomotive Street in Eveleigh as shown overleaf.

The majority of deliveries will be scheduled during the day, however some deliveries will be required at night during trackwork periods.



Where will work take place?

The above map shows the work areas inside the rail corridor and our site compounds. The project team will utilise the site compounds for deliveries, storage of materials and equipment, offices, pre-start work meetings and worker parking.

All work is dependent on weather and site conditions and is subject to change.

How do we consider the community?

The project team understands construction activities may cause disruption for the community. We will seek to minimise impacts as much as possible and adhere to strict environmental conditions relating to noise, vibration and dust management.

There's a lot happening

Currently there are multiple project teams, transport agencies and contractors working within the rail corridor in Eveleigh and Redfern.

For more information on work being completed by **Sydney Trains**, please phone 1300 656 999 or visit www.transport.nsw.gov.au/sydtraincommunity.

For more information on the work being undertaken on the **Redfern Station Upgrade - New Southern Concourse project** please visit <https://www.transport.nsw.gov.au/projects/current-projects/redfern-station-upgrade-new-southern-concourse>, or phone 1800 684 490.

Contact us

If you have any questions or would like more on the More Trains, More Services project please contact our project team:



1800 684 490



projects@transport.nsw.gov.au



www.transport.nsw.gov.au/mtms



Level 5, 15 Bourke Road
Mascot NSW 2020



If you need help understanding this information, please contact the Translating and Interpreting Service on 131 450 and ask them to call us on 1800 684 490.

June and July 2022

Privacy Transport for NSW (TfNSW) is subject to the Privacy and Personal Information Protection Act 1998 ("PIIP Act") which requires that we comply with the Information Privacy Principles set out in the PIIP Act. All information in correspondence is collected for the sole purpose of assisting in the delivery of this project. The information received, including names and addresses of respondents, may be published in subsequent documents unless a clear indication is given in the correspondence that all or part of that information is not to be published. Otherwise we will only disclose your personal information, without your consent, if authorised by the law. Your personal information will be held by us at 27 Argyle Street, Parramatta. You have the right to access and correct the information if you believe that it is incorrect.