

More Trains, More Services

Sydney Terminal Area Reconfiguration Project

Transport for NSW | July 2022

What are we doing?

We are upgrading the rail infrastructure between Sydney Terminal and Erskineville Junction to simplify and modernise the rail network so that customers can expect more frequent train services in the future.

Upcoming work in Redfern

In July we will install new fibre cables through existing conduits inside the rail corridor at Redfern. As part of this work, the project team will use a specialised rail truck to carry the fibre cables and an elevated work platform to reach any elevated conduits.

Once installed and commissioned, the new fibre cables will carry vital signalling information between Sydney Terminal and Erskineville Junction.

When will work take place?

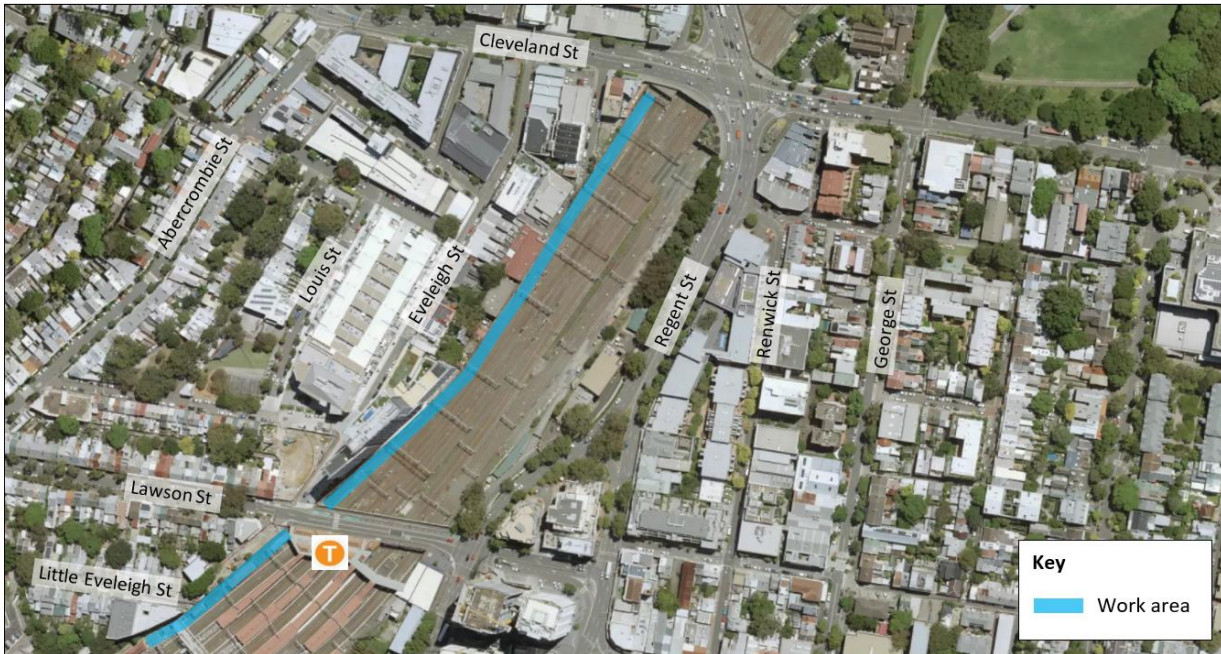
Work will take place **from 5am Saturday 9 July through to 2am Monday 11 July.**

The work will take place during scheduled Sydney Trains trackwork periods when no trains will be running. Scheduling construction work outside of standard construction hours enables our project team to complete essential work safely.

All work is dependent on weather and site conditions and is subject to change.



Work undertaken at Central in 2021 as part of the Sydney Terminal Area Reconfiguration Project



Where will work take place?

The above map shows the work area inside the rail corridor at Redfern.

How do we consider the community?

The project team understands construction activities may cause disruption for the community. We will seek to minimise impacts as much as possible and adhere to strict environmental conditions relating to noise, vibration and dust management.

There's a lot happening

Currently there are multiple project teams, transport agencies and contractors working within the rail corridor in Eveleigh and Redfern.

For more information on work being completed by **Sydney Trains**, please phone 1300 656 999 or visit www.transport.nsw.gov.au/sydtraincommunity.

For more information on the work being undertaken on the **Redfern Station Upgrade - New Southern Concourse project** please visit <https://www.transport.nsw.gov.au/projects/current-projects/redfern-station-upgrade-new-southern-concourse>, or phone 1800 684 490.

Contact us

If you have any questions or would like more on the More Trains, More Services project please contact our project team:



1800 684 490



projects@transport.nsw.gov.au



www.transport.nsw.gov.au/mtms



Level 5, 15 Bourke Road
Mascot NSW 2020



If you need help understanding this information, please contact the Translating and Interpreting Service on 131 450 and ask them to call us on 1800 684 490.

July 2022

Privacy Transport for NSW (TfNSW) is subject to the Privacy and Personal Information Protection Act 1998 ("PIIP Act") which requires that we comply with the Information Privacy Principles set out in the PIIP Act. All information in correspondence is collected for the sole purpose of assisting in the delivery of this project. The information received, including names and addresses of respondents, may be published in subsequent documents unless a clear indication is given in the correspondence that all or part of that information is not to be published. Otherwise we will only disclose your personal information, without your consent, if authorised by the law. Your personal information will be held by us at 27 Argyle Street, Parramatta. You have the right to access and correct the information if you believe that it is incorrect.