

# Drainage upgrade work at Eveleigh

## More Trains, More Services

May and June 2023



Transport for NSW acknowledges the Gadigal people of the Eora Nation as the Traditional Custodians of the lands on which we work and pay respects to Elders past and present.

We are upgrading the rail infrastructure between Sydney Terminal and Erskineville Junction to support the introduction of the new fleet of trains operating on the South Coast Line. This includes upgrading the drainage system within the rail corridor at Eveleigh to prevent future flooding and improve reliability across the network.

### What work are we doing?

#### Drainage pipe installation

Work to install new drainage infrastructure is progressing inside the rail corridor. We have recently installed around 90 metres of new drainage and have another 180 metres to go.

The work involves removing sections of track, installing new drainage pipes and reinstating the track. We will utilise the site compounds shown on the map overleaf for deliveries, storage of materials and equipment, and worker parking.

The work is expected to take another seven weekends to complete, with two weekends of work planned in May and June 2023.

#### Pump station construction

Work to construct a pump station at the Eveleigh Maintenance Centre (EMC) will continue during standard construction hours in May and June 2023.

## We are going paperless



This is the last paper notification you will receive from us.

We are committed to reducing our paper usage and environmental impacts.

After May 2023, we will no longer be distributing paper notifications to residents (unless requested). Instead, we will contact you via email when there is construction work that may impact you.



To register for email updates, please scan the QR code and fill out the form.

If you do not register for updates, you may miss out on important updates and information about potential inconveniences caused by our construction work.

If you wish to continue to receive paper notifications, you can request this via the QR code or call us at 1800 684 490.

### When we'll be working

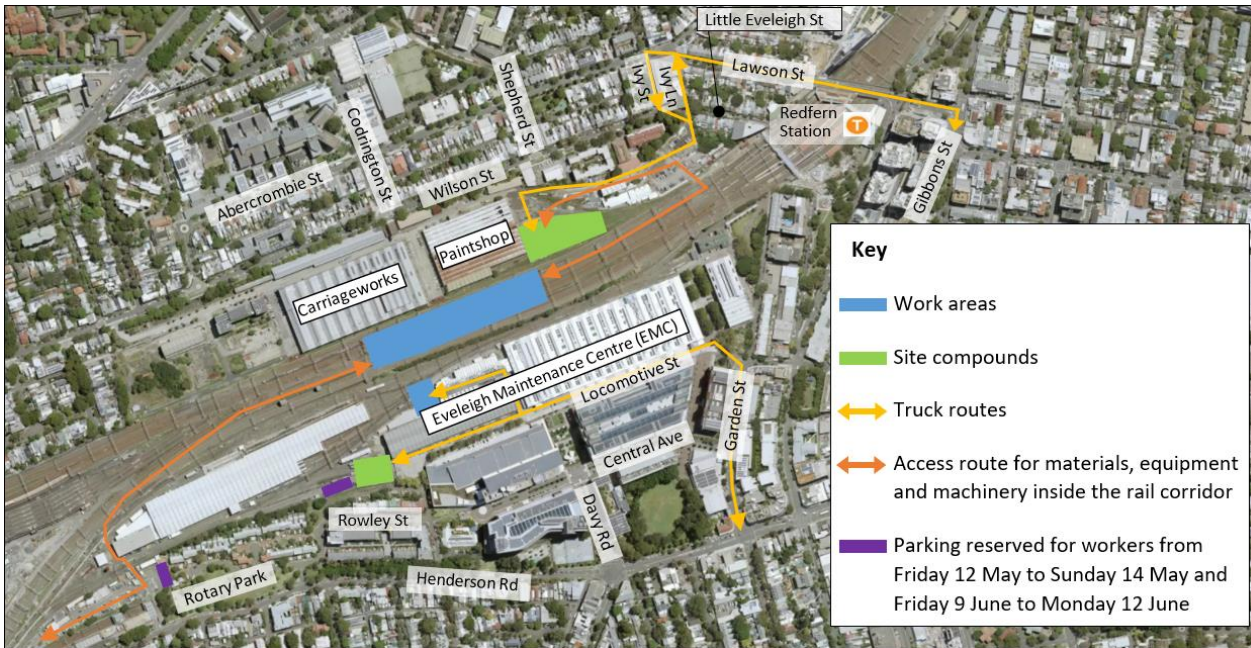
Standard construction hours are **7am to 6pm Monday to Friday and 8am to 1pm on Saturdays.**

For safety reasons, some of the work will take place during scheduled Sydney Trains trackwork periods when no trains are running:

- **10pm Friday 12 May to 2am Monday 15 May 2023**
- **10pm Friday 9 June to 2am Tuesday 13 June 2023.**



## Location of work



## What will this mean for you?

You may notice:

- workers and heavy vehicles
- noise from machinery and equipment.

## Deliveries

As part of the upcoming work there will be deliveries of equipment, machinery and materials.

The majority of deliveries will be scheduled during the day, however some deliveries will be required to take place during the trackwork periods as outlined on Page 1.

The truck routes to and from our work areas are shown on the map above.

## Managing our impacts

We understand construction activities may cause disruption for the community.

We'll seek to minimise impacts as much as possible and adhere to strict environmental conditions relating to noise, vibration and dust management.

## There's a lot happening

There are multiple project teams, transport agencies and contractors working within the rail corridor and site compounds shown on the map above.

For more information on work being completed by Sydney Trains, please phone 1300 656 999 or visit [www.transport.nsw.gov.au/sydtraincommunity](http://www.transport.nsw.gov.au/sydtraincommunity). For more information about the Redfern Station Upgrade, please phone 1800 684 490 or visit [www.transport.nsw.gov.au/projects/current-projects/redfern-station-upgrade-new-southern-concourse](http://www.transport.nsw.gov.au/projects/current-projects/redfern-station-upgrade-new-southern-concourse).

## Contact us



Project Infoline **1800 684 490**  
24-hour Construction Response Line  
**1800 775 465**



[projects@transport.nsw.gov.au](mailto:projects@transport.nsw.gov.au)



[yoursay.transport.nsw.gov.au/mtms](https://yoursay.transport.nsw.gov.au/mtms)



**Register for email updates**



### Interpreter service

For languages other than English call 131 450  
Arabic • Cantonese • Hindi • Mandarin • Vietnamese

لطلب خدمة الترجمة الشفهية للغات غير الإنجليزية اتصل بالرقم  
**131 450**

獲取英語以外的其他語言傳譯協助服務可以致電**131 450**

अंग्रेज़ी के अतिरिक्त अन्य भाषाओं के लिए दुभाषिया सेवा **131 450**  
पर कॉल करें

获取英语以外的其他语言口译协助服务可以致电**131 450**

Để có dịch vụ thông ngôn cho các ngôn ngữ khác tiếng Anh,  
gọi số **131 450**



Subscribe for updates via the QR code

[https://www.transport.nsw.gov.au/privacy-statement#Your\\_Privacy](https://www.transport.nsw.gov.au/privacy-statement#Your_Privacy)