

More Trains, More Services

Sydney Terminal Area Reconfiguration Project

Over the next ten years the More Trains, More Services program will simplify and modernise the rail network, creating turn up and go services for many customers. It means customers can expect more frequent train services, with less wait times, less crowding and more seats on a simpler, more reliable network.

Project update

Upgrades to rail infrastructure between Sydney Terminal and Erskineville Junction are required to support the introduction of the new fleet of trains operating on the South Coast Line that will access platforms 1 to 14 at Central Station.

Preliminary site investigations started in June with site establishment and main construction work progressing in the coming months. Construction will take around two years to complete.

Work we are doing to improve the train network for customers and our staff

- reconfiguration of the railway tracks to improve the efficiency of the network
- realignment of overhead wiring and signals
- movement of underground utilities, structures and drainage.

What you will notice

We are continuing to deliver projects across NSW while ensuring the safety of all staff and the community. In line with current Australian Government guidelines around slowing the spread of Coronavirus and social distancing, all work will be carried out at a safe physical distance where possible and necessary hygiene practices will be observed.

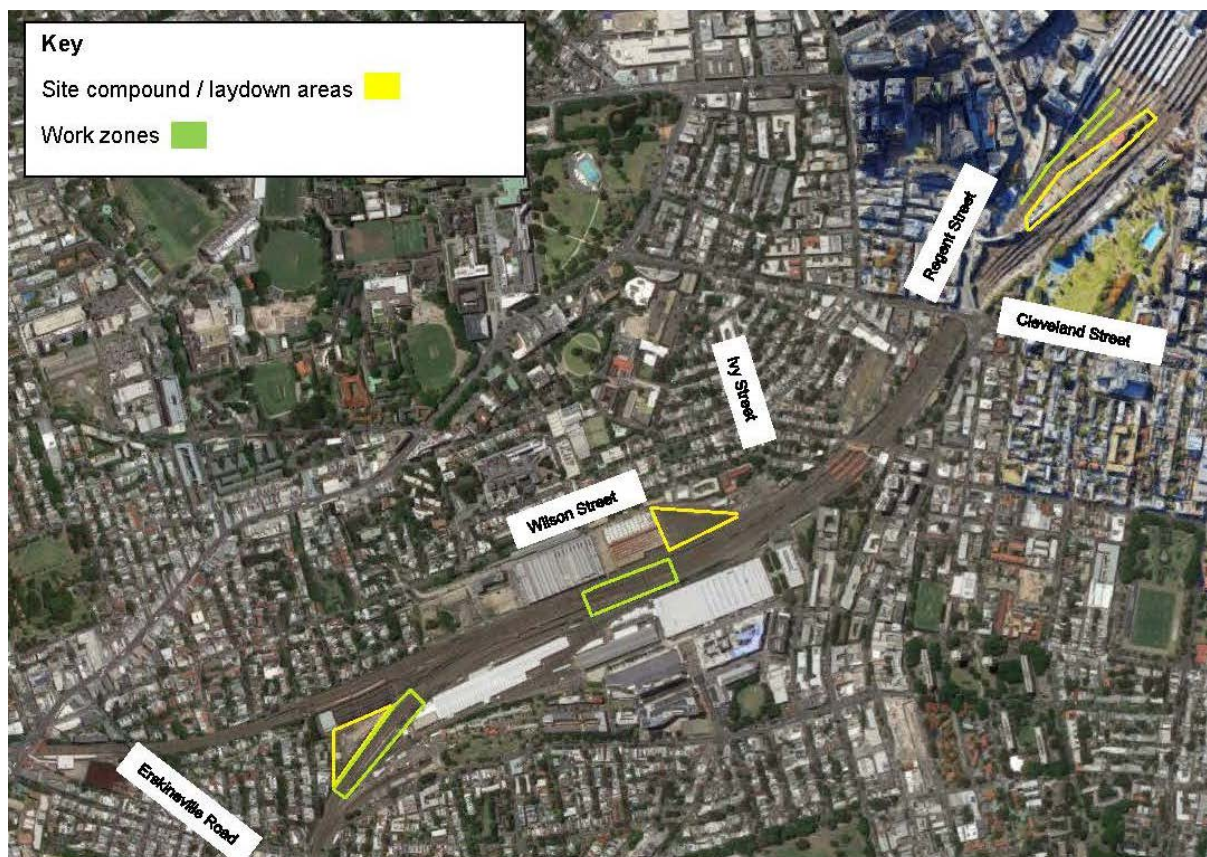
Activities being undertaken in August include:

- site investigation and survey work
- geotechnical, overhead wiring, signalling and service investigations
- site establishment.

Indicative work calendar – August 2020

Key day work (7am - 6pm) trackwork weekend (6am - 6pm, both days)						
Monday	Tuesday	Wednesday	Thursday	Friday	Saturday	Sunday
					1	2
3	4	5	6	7	8	9
10	11	12	13	14	15	16
17	18	19	20	21	22	23
24	25	26	27	28	29	30
31						

Map of Project area



Overview image showing infrastructure improvements to be completed in the rail corridor between Erskineville Junction and Central Station.

Contact us

If you would like to find out more about the project or subscribe to the project email distribution list please contact us:

- call: **1800 684 490**
- email: projects@transport.nsw.gov.au
- visit: transport.nsw.gov.au/mtms

Thank you for your patience during this important work.



This document contains important information about public transport projects in your area. If you require the services of an interpreter, please contact the Translating and Interpreting Service on **131 450** and ask them to call Transport for NSW on **(02) 9200 0200**. The interpreter will then assist you with translation.