



More Trains, More Services Program Sydney Terminal Area Reconfiguration Project July 2020

Project overview

Upgrades to rail infrastructure between Sydney Terminal (Central) and Erskineville Junction are required to support the introduction of the new fleet of trains operating on the South Coast Line that will access platforms 1 to 14 at Central Station.

Upgrades include:

- reconfiguration of the railway tracks
- relocation of overhead wiring and signals
- relocation of underground utilities and drainage improvements.

A construction contract has been awarded to Next Rail comprising of John Holland and Jacobs who will work in partnership with Transport for NSW to deliver More Trains, More Services (MTMS) projects between Sydney Terminal and Hurstville.

Planning approval has been granted and site investigation activities have commenced. This project will take approximately two years to complete.

Upcoming work

In line with current Australian Government guidelines around slowing the spread of Coronavirus and social distancing, all work will be carried out at a safe physical distance where possible and necessary hygiene practices will be observed. All efforts will be made to minimise impacts where possible and ensure strict environmental conditions relating to noise, vibration and dust management are adhered to.

During July, work will take place inside the rail corridor between Sydney Terminal and Erskineville Junction. The following activities will take place:

- site establishment
- geotechnical and utility investigations including track drainage
- overhead wiring investigations including potholing and excavation work
- signalling investigations
- survey work.

Trackwork weekends - July

To minimise disruption to customers, and to improve the safety of workers and the community, some night work is required this month on the following trackwork weekends:

- **From 7am, Saturday 11, through to 6pm, Sunday 12 July**
- **From 3am, Saturday 25, through to 10pm, Sunday 27 July.**

Please note this is dependent on weather and site conditions and is subject to change. See calendar overleaf for further details.

Please note there are other projects working in this area and train services may be affected during scheduled Sydney Trains trackwork. Please contact Transport Info on 131 500 or visit transportnsw.info for more information.

Indicative work calendar – July 2020

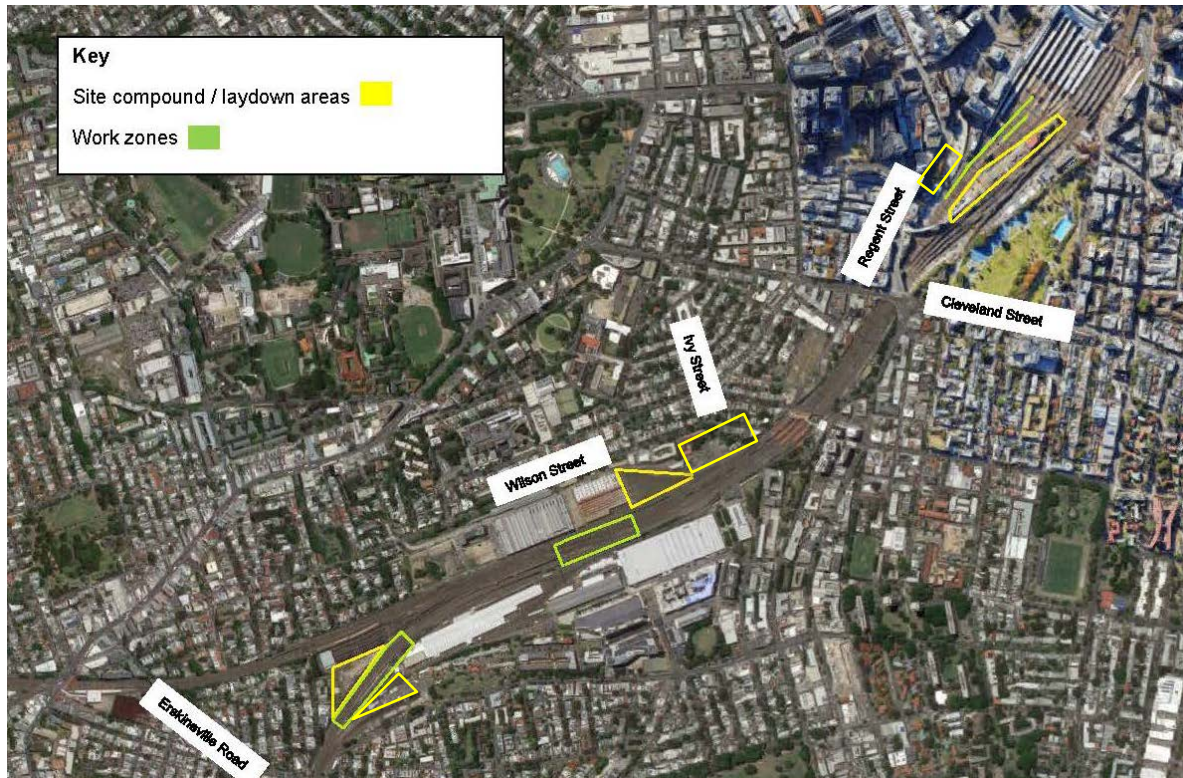
Key day work (7am - 6pm) trackwork weekend (24 hours)						
Monday	Tuesday	Wednesday	Thursday	Friday	Saturday	Sunday
		1	2	3	4	5
6	7	8	9	10	11	12
13	14	15	16	17	18	19
20	21	22	23	24	25	26
27	28	29	30	31		

What you may notice

Equipment to be used during this work will include light vehicles, hi-rail excavators, vacuum trucks, watercart, street sweeper and hand tools. Workers and vehicles will be accessing the rail corridor via the gates at Railway Parade, Burren Street, Little Eveleigh Street, Erskineville Road and Lee Street.

Every effort will be made to minimise any construction impacts to the local community. We apologise in advance for any inconvenience and will do everything we can to reduce noise where possible.

Map of work locations



Contact us

If you would like to speak with the project team or to be added to the project mailing list:

- project info line: **1800 684 490**
- 24 hours construction response line: **1800 775 465**
- email: **projects@transport.nsw.gov.au**
- visit: **transport.nsw.gov.au/projects/more-trains-more-services**



This document contains important information about public transport projects in your area. If you require the services of an interpreter, please contact the Translating and Interpreting Service on **131 450** and ask them to call Transport for NSW on **(02) 9200 0200**. The interpreter will then assist you with translation.