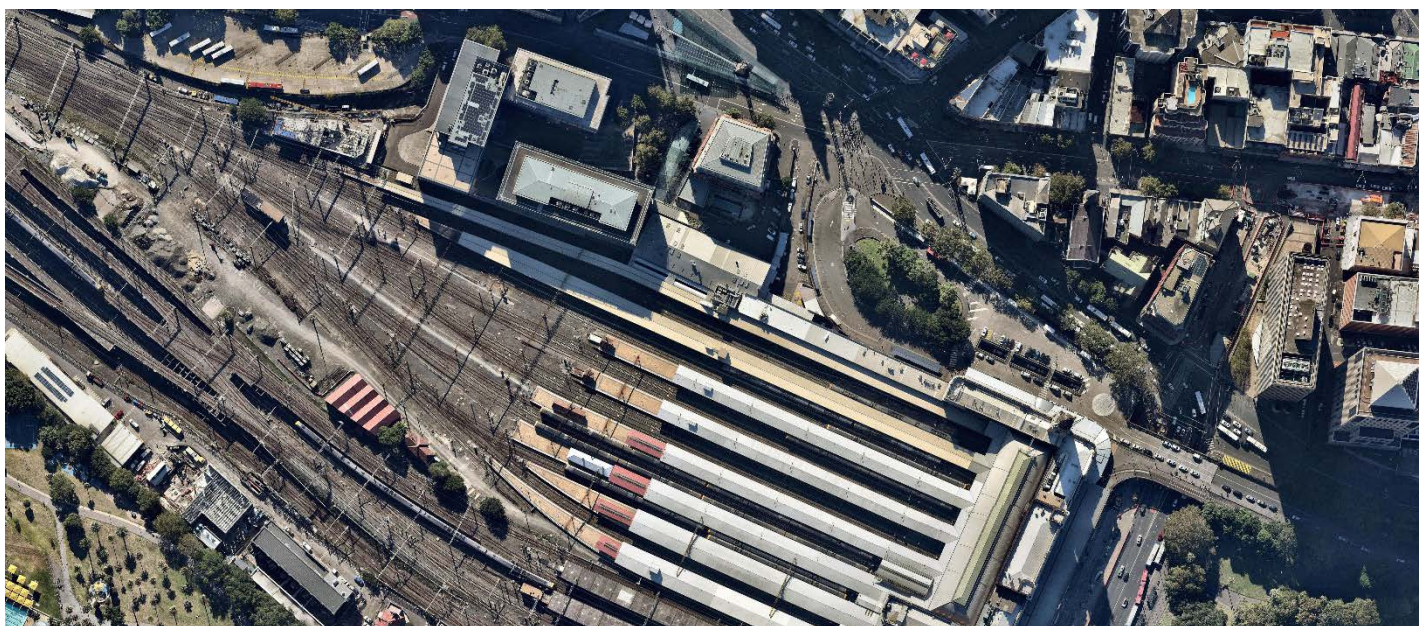


More Trains, More Services

Sydney Terminal Area Reconfiguration project



What happened in October?

During October, we continued with site investigations and survey work between Sydney Terminal and Macdonaldtown Stabling Yard.

What's planned next?

During November, we will continue with the following activities:

- site investigation and survey work
- geotechnical, overhead wiring, signalling and service investigations

Construction activities will be undertaken during standard construction hours from 7am to 6pm Monday to Friday, and 8am to 1pm on Saturday.

Are there activities planned out of hours?

To minimise disruption to customers, and to improve the safety of workers and the community, **oversize deliveries of rail infrastructure** will take place on the following evenings:

- 8pm, Tuesday 17 to 6am, Wednesday 18 November.

Each night, three trucks carrying oversize rail tracks will arrive via Locomotive Street, Eveleigh and Swanson Street, Erskineville. They will be unloaded by a front end loader. Residential parking and side streets will remain open during this time.

Out of hours work is also planned and will be carried during a rail shutdown weekend from:

- 10pm, Friday 27 to 2am, Monday 30 November.

These works are dependent on weather and site conditions and are subject to change.

Completing work during scheduled track-work periods enables the construction team to safely carry out essential activities inside the rail corridor.

For up to date information about services during these times please visit transportsw.info or call 131 500.



What's next?

The next phase of major construction for the project will start in December to install new tracks near Macdonaldtown Stabling Yard. This work is a critical component of the upgrade that will be carried out over a consecutive number of days during a rail shutdown in late December. We will provide further information in the coming weeks and will get in touch with directly impacted stakeholders about the nature of this work.

How do we consider the community?

The project team understands construction activities may cause disruption for the community and we will seek to minimise impacts as much as possible.

We will also ensure we adhere to strict environmental conditions relating to noise, vibration and dust management.

How are we staying safe?

We continue to deliver projects across NSW while ensuring the safety of all staff and the community. In line with current Australian Government guidelines around slowing the spread of Coronavirus and social distancing, all work will be carried out at a safe physical distance where possible and necessary hygiene practices will be observed.

About More Trains, More Services

Over the next ten years the More Trains, More Services program will simplify and modernise the rail network so that customers can expect more frequent train services, with less wait times, less crowding and more seats on a simpler, more reliable network.

Contact us

For more information or to subscribe for project updates:

 project information line: 1800 684 490

 24/7 construction response line: 1800 775 465

 projects@transport.nsw.gov.au

 www.transport.nsw.gov.au/mtms

Translation



If you require the services of an interpreter, please contact the Translating and Interpreting Service on 131 450 and ask them to contact Transport for NSW on (02) 9200 0200.

An interpreter will assist you with translation.