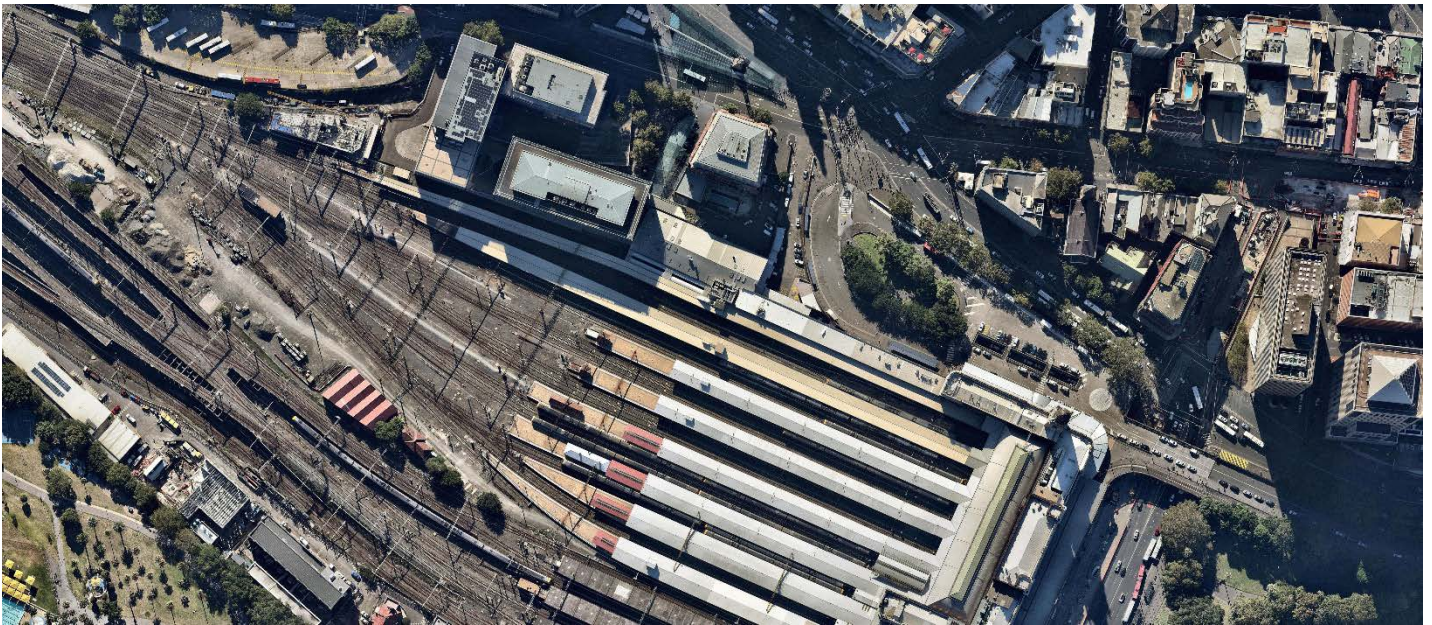


More Trains, More Services

Sydney Terminal Area Reconfiguration project



What happened in September?

During September, we continued with preliminary site investigations between Sydney Terminal and Macdonaldtown Stabling Yard.

What's planned next?

Throughout October, we will continue with the following activities:

- site investigation and survey work
- geotechnical, overhead wiring, signalling and service investigations
- site and laydown areas established for materials and equipment.

These works are part of our program of work to upgrade the rail infrastructure between Sydney Terminal and Erskineville Junction, which is required to support the introduction of the new fleet of trains operating on the South Coast Line which will access platforms 1 to 14 at Central Station.

When will day work and deliveries occur?

During October, it will be necessary to undertake **day works** from 7am to 6pm Monday to Friday, and 8am to 1pm on Saturday.

To minimise disruption to customers, and to improve the safety of workers and the community, **oversize deliveries of rail infrastructure** will take place on the following evenings:

- Wednesday 30 September and Thursday 1 October, 6pm to 6am
- 8pm, Monday 5 to 6am, Tuesday 6 October
- 8pm, Sunday 11 to 6am, Monday 12 October
- 8pm, Sunday 18 to 6am, Monday 19 October
- 8pm, Sunday 25 to 6am, Monday 26 October.

Each night, three trucks carrying oversize rail turnouts will arrive outside of standard construction hours via Regent Street, Chippendale and Swanson Street, Erskineville. They will be unloaded by a front end loader. Residential parking and side streets will remain open during this time.



When are track works taking place?

Some out of hours work is planned to complete the site investigations. Every effort will be made to minimise disruption to the community including traffic control and signage for vehicles and cyclists travelling in the vicinity of the site investigation locations.

- 10pm, Friday 2 to 2am, Tuesday 7 October
- 3am, Saturday 10 to 2am, Monday 12 October.

These works are dependent on weather and site conditions and are subject to change.

Completing work during scheduled track-work periods enables the construction team to safely carry out essential activities inside the rail corridor.

For up to date information about services during these times please visit transportnsw.info or call 131 500.

How are we staying safe?

We continue to deliver projects across NSW while ensuring the safety of all staff and the community. In line with current Australian Government guidelines around slowing the spread of Coronavirus and social distancing, all work will be carried out at a safe physical distance where possible and necessary hygiene practices will be observed.

About More Trains, More Services

Over the next ten years the More Trains, More Services program will simplify and modernise the rail network so that customers can expect more frequent train services, with less wait times, less crowding and more seats on a simple, more reliable network.

Contact us

For more information or to subscribe for project updates:

 project information line: 1800 684 490

 24/7 construction response line:
1800 775 465

 projects@transport.nsw.gov.au

 www.transport.nsw.gov.au/mtms

Translation



If you require the services of an interpreter, please contact the Translating and Interpreting Service on 131 450 and ask them to contact Transport for NSW on (02) 9200 0200.

An interpreter will assist you with translation.