

More Trains, More Services

Thirroul, Bellambi, Kiama and Port Kembla Platform Extensions



More Trains, More Services

The More Trains, More Services program is delivering platform extensions and rail asset upgrades between Sydney's CBD and the South Coast to support the introduction of the Mariyung fleet.

What's been happening?

After pausing all construction activity as a result of NSW Government Public Health Orders and Restrictions at the end of July, we are now back on site and continuing our upgrade work at Thirroul, Bellambi and Kiama stations.

We have extended Platforms 1 and 2 at Kiama by approximately 8 metres at each end to accommodate the longer trains and make it easier for customers to access all carriages of the Mariyung fleet.

As we approach completion of the platform extensions at Thirroul, Bellambi and Kiama, our attentions will return to Port Kembla.

Earlier this year, we started preparing Port Kembla Station for the platform extension work which will start in September 2021.

What's next?

Thirroul and Bellambi

In September, we will be focusing on platform extensions at Thirroul and Bellambi, including concrete pouring, laying asphalt, painting work and tactile installation.

After we have completed the platform extensions, we will begin installing light poles and CCTV for improved customer safety and security and upgrading signalling equipment to support improved electrical capacity on the network.

Kiama

Remaining activities on the platform at Kiama Station will be cosmetic to comply with rail standards and our work will now move south-west towards Barney Street.

Port Kembla

At Port Kembla, we will be excavating and installing concrete supports for the new platform extension, which will also require the relocation of underground drainage routes and minor vegetation clearing at the end of the platform.

Night work

In September, some work activities are required to take place outside of standard construction hours (7am- 6pm) at Thirroul and Bellambi stations.

This work has been scheduled to take place during a Sydney Trains trackwork periods when no trains are running.

Scheduling our work to coincide with Sydney Trains track work periods minimises disruptions to commuter services and improves the safety of our construction team and customers.

Work outside standard construction hours is scheduled to take place between:

- **6pm Monday 30 August and 7am Thursday 2 September at Thirroul**
- **6pm Friday 10 and 7am Monday 13 September at Thirroul and Bellambi**
- **6pm Friday 17 and 7am Monday 20 September at Kiama**

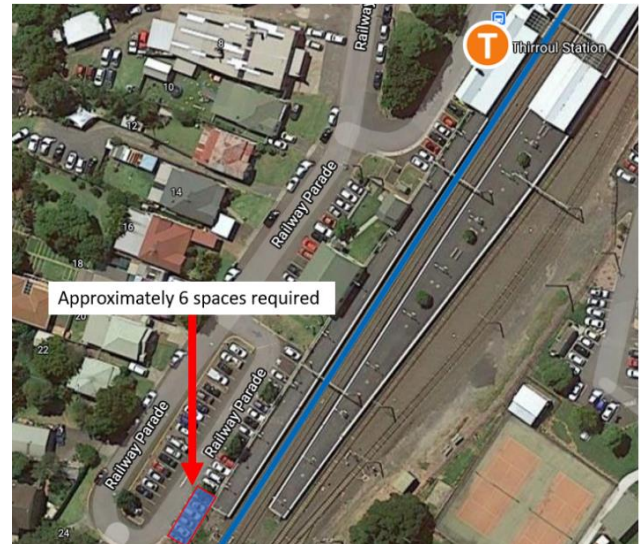
Night Work Calendar – August & September 2021						
Mon	Tue	Wed	Thu	Fri	Sat	Sun
30	31	1	2	3	4	5
Thirroul						
6	7	8	9	10	11	12
				Thirroul and Bellambi		
13	14	15	16	17	18	19
				Kiama		
20	21	22	23	24	25	26
27	28	29	30			

These times are subject to change as a result of NSW Government Public Health Orders and Restrictions. For up to date information, please visit yoursay.transport.nsw.gov.au/mtms-southcoast

Parking changes at Thirroul

To enable construction activities to be undertaken safely, we will be temporarily reserving car spaces at Thirroul between **6pm Friday 10 and 7am Monday 13 September**.

We will temporarily require the use of 6 commuter car parking spaces off Railway Parade in Thirroul, as indicated in the image below.



We will also be reserving 30 car spaces off King Street in Thirroul for the safe delivery of plant and material, as indicated in the image below.



Traffic control will reserve these spaces and signage will be installed to advise motorists about these temporary changes.

Parking changes at Bellambi

To enable the safe movement of construction plant, we will be temporarily reserving 6 spaces at Bellambi between **6pm Friday 10 and 7am Monday 13 September**, as indicated in the image below.



Parking changes at Kiama

We will temporarily reserve 17 spaces in the commuter Park & Ride facility at Kiama between **6pm Friday 17 and 7am Monday 20 September at Kiama**, as indicated in the image below.



How we are keeping our sites safe

We are continuing to deliver projects across New South Wales while ensuring the safety of all staff and the community.

All work will be carried out in line with current NSW Government Public Health Orders and Restrictions which are subject to change.

Minimising Community Impacts

The project team understands that construction activities may cause disruption for the community and every effort will be made to minimise impacts where possible, including:

- turning off equipment when not in use and using non-tonal reversing alarms to reduce potential noise impacts to the surrounding community.
- locating equipment as far away from residents and businesses as possible
- directing lighting away from residents
- installing noise barriers to shield residents from high impact noise activities
- conducting on-site monitoring to ensure compliance with strict environmental conditions relation to noise, vibration and dust management.



A picture showing the steel reinforcement of the platform extension at Bellambi prior to the concrete pour – August 2021

Mariyung Fleet

The platform extensions at Thirroul, Bellambi and Kiama stations will support the introduction of a new 55-train fleet with 554 new carriages for improved safety, accessibility and comfort.

This fleet has been called 'Mariyung', the Darug word for Emu in acknowledgment of the local Aboriginal culture.

The Mariyung fleet will run through many Aboriginal countries such as Darug country, as well as at final destinations in Wiradjuri Country in the west at Lithgow; Awabakal Country to the north at Newcastle and Dharawal Country to the south at Kiama.

Testing of the new fleet is in its final intensive stages.

There is still some work to be completed before the train enters passenger service. This includes familiarising staff with the new train through education and training exercises, finalising consultation with stakeholders, and other operational readiness activities.

Benefits of the MTMS program



Simplified rail network
to improve reliability and reduce customer impacts from incidents



More services
that will reduce wait times and ease crowding for longer distance customers



Better connections
and integration with other modes of transport



Faster travel time
for customers through digital train control technology and upgraded rail infrastructure, creating more opportunities for express trains

Keep in touch

We would like to thank you, our closest neighbours, for your ongoing support as we work to improve services on the network.

If you would like to know more about our work, please visit the project webpage

yoursay.transport.nsw.gov.au/mtms-southcoast or contact us through the avenues listed below.

About More Trains, More Services

Over the next ten years the More Trains, More Services program will simplify and modernise the rail network so that customers can expect more frequent train services, with less wait times, less crowding and more seats on a simpler, more reliable network.

Contact us

For more information or to subscribe for project updates:

 **project information line: 1800 684 490**

 **24/7 construction response line: 1800 775 465**

 **projects@transport.nsw.gov.au**

 **www.transport.nsw.gov.au/mtms**

Translation



If you require the services of an interpreter, please contact the Translating and Interpreting Service on **131 450** and ask them to contact Transport for NSW on **1800 684 490**.

An interpreter will assist you with translation.