

More Trains, More Services

Thirroul Platform Extension Project

Work being completed at Thirroul, December 2020



What's the latest news?

Over the last two months, we have been busy working in the rail corridor at Thirroul, completing installation of combined service routes to protect and carry utility cables underground. This work is important for improving the capacity of the rail system for future use and efficiency.

Pipes have also been laid underneath the rail tracks and a new base structure has been installed to enable the construction and installation of new signals.

What's coming next?

Throughout February, we will be completing:

- overhead wiring activities
- installation of track, signalling equipment, overhead wiring footings and masts

Changes to car parking

From **12pm Friday 19** until **6am Monday 22 February** we will require temporary use of approximately 15 car spaces to enable construction activities to be undertaken safely.

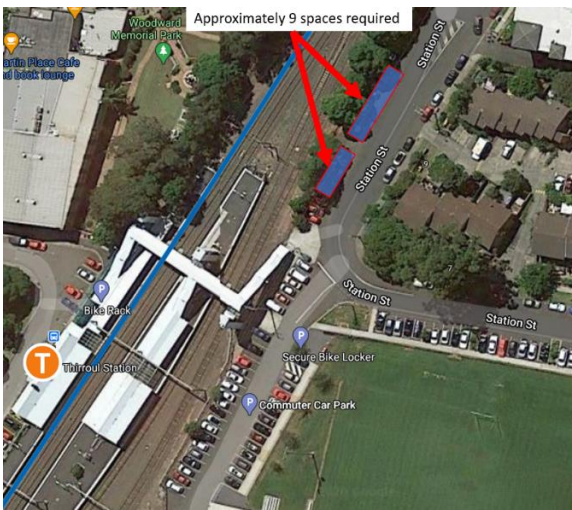
Railway Parade

We will reserve approximately 6 car spaces off Railway Parade, as indicated in the image below.



Station Street

We will reserve approximately 9 car spaces off Station Street, as indicated in the image below.



Bollards will be installed to reserve these spaces and signage will be in place to advise motorists in advance about these temporary changes.

What you need to know about construction hours

Standard construction hours on this project are 7am to 6pm, Monday to Friday, weekends and public holidays.

To minimise disruption to commuter services and improve the safety of the construction team, we will be undertaking activities outside of standard construction hours.

This work will take place from **6am Saturday 20 until midnight Sunday 21 February**, while passenger trains are not running.

For up to date information about services during these times please visit transportnsw.info or call 131 500.

About More Trains, More Services

Over the next ten years the More Trains, More Services program will simplify and modernise the rail network so that customers can expect more frequent train services, with less wait times, less crowding and more seats on a simpler, more reliable network.

How we will minimise construction impacts

The project team understands that construction activities may cause disruption for the community and every effort will be made to minimise impacts where possible including turning off machinery when not in use, using non-tonal reversing beepers and undertaking noise monitoring. We will ensure compliance with strict environmental conditions relating to noise, vibration and dust management.

Our noise modelling has indicated that some properties will be effected by this work. We are committed to minimising disruption on local residents and businesses and will contact you directly if your property is impacted.

How are we keeping out sites safe?

In line with current Australian Government guidelines around slowing the spread of Coronavirus and social distancing, all work will be carried out at a safe physical distance where possible and all necessary hygiene practices will be observed.

Contact us

For more information or to subscribe for project updates:

 **project information line: 1800 684 490**

 **24/7 construction response line: 1800 775 465**

 **projects@transport.nsw.gov.au**

 **www.transport.nsw.gov.au/mtms**

Translation



If you require the services of an interpreter, please contact the Translating and Interpreting Service on **131 450** and ask them to contact Transport for NSW on **(02) 9200 0200**.

An interpreter will assist you with translation.