

Maintenance work on the Hume Highway at Marulan from Monday 13 November

Upcoming work

November 2023



Transport for NSW acknowledges the Traditional Custodians of the lands on which we work and pays respect to Elders past and present.

Transport for NSW will carry out maintenance work on the Hume Highway at Marulan

What work are we doing?

Following the concrete slab replacement work carried out in October 2023, we will be replacing additional concrete pavement slabs in various locations on the southbound lanes along the Hume Highway at Marulan.

This work will support future rehabilitation of the Hume Highway and improve safety.

Work will be carried out on the southbound lanes on the Hume Highway from the Marulan southbound BP Service Centre for about three kilometres.

We will be working **between 6am and 4.30pm from Monday 13 November to Friday 8 December**, weather permitting. No work will be carried out on Saturdays and Sundays.

How will this work affect you?

There will be noise and lighting associated with this work. We will make every effort to minimise noise where possible.

Traffic impacts

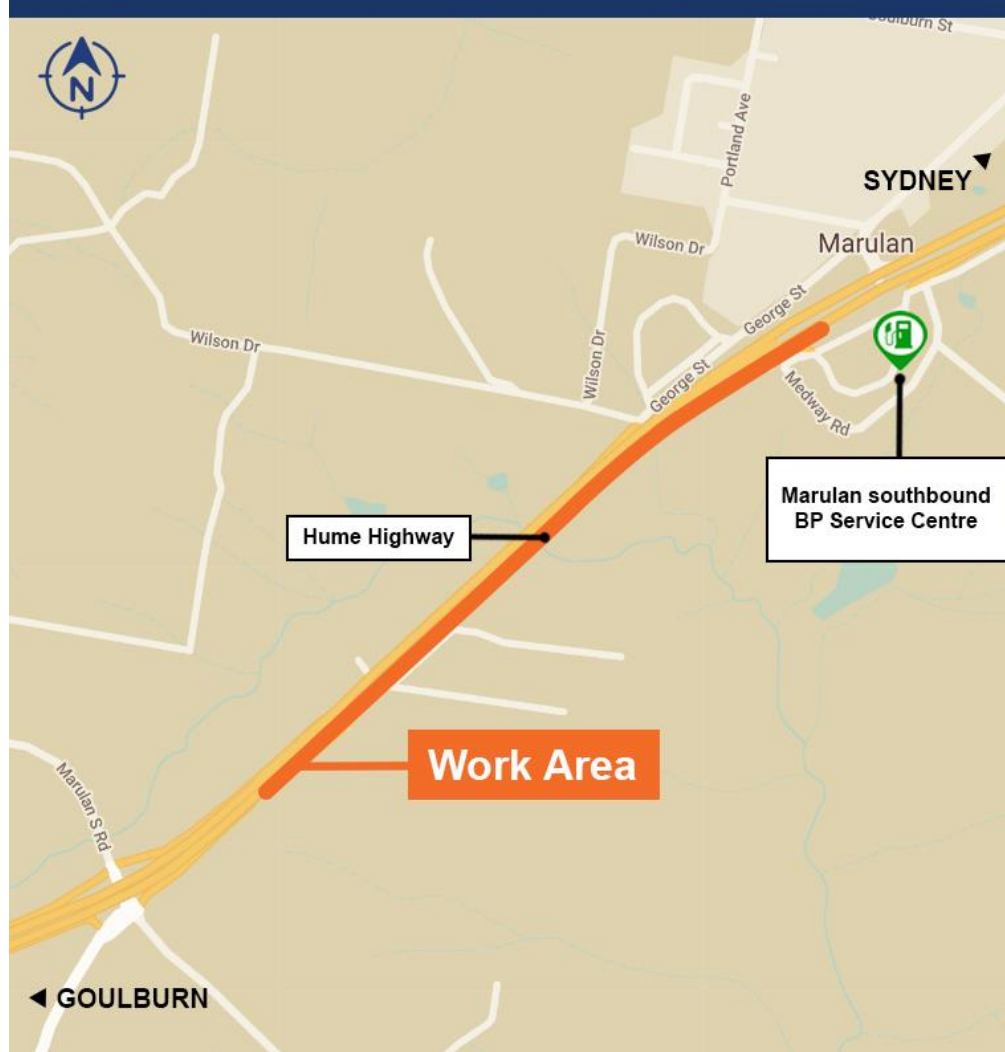
During work, a reduced speed of 40 km/h will be in place.

A single lane closure of the southbound slow lane will be in place 24 hours a day, Monday to Friday. Both southbound lanes will remain open on Saturdays and Sundays.

Road users are advised to allow five minutes additional travel time, drive to the conditions, and follow the directions of signs and traffic control.

For the latest traffic updates, you can call 132 701, visit [livetraffic.com](https://www.livetraffic.com) or download the Live Traffic NSW App.

Changed traffic conditions on the Hume Highway at Marulan



Contact us

If you have any questions or would like more information, please contact the project team:

0497 879 428

southprojects@transport.nsw.gov.au

transport.nsw.gov.au

If you need help understanding this information, please contact the Translating and Interpreting Service on 131 450 and ask them to call us on 0497 879 428.