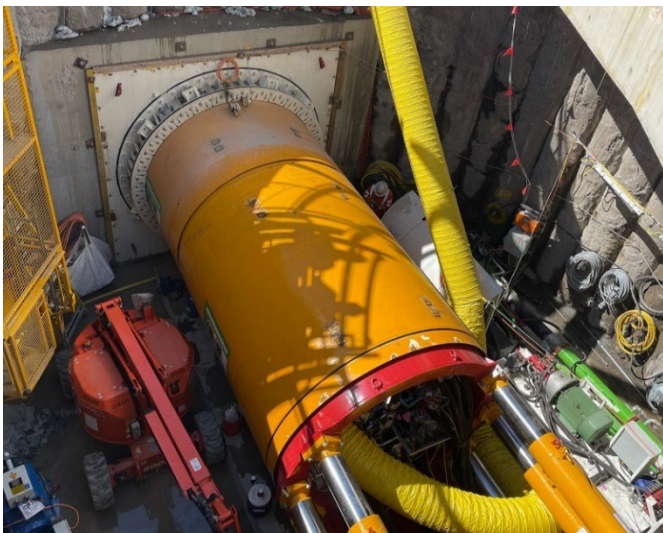


More Trains, More Services

Mascot Power Supply Upgrade Project

Upcoming out of hours work at the retrieval shaft on Bourke Street between Coward and John Streets **from 6pm, Tuesday 30 November to 7am, Sunday 5 December** and road closure of Bourke Street between Coward and John Streets **from 10pm, Thursday 2 December to 3am, Sunday 5 December**



Our newly launched TBM at the Launch shaft at 166 O'Riordan Street, Mascot

Our micro tunnelling machine is on its way to the retrieval shaft

The micro-tunnelling machine is on its way approximately 8 metres underneath Bourke Road and will complete the required cable tunnel for the power supply to the T8 Airport Line at the end of this month.

Once the machine is retrieved, cabling will take place to connect the new substation at 166 O'Riordan Street to the T8 Airport Line tunnel where the retrieval shaft is located. This will generate the required power to supply more trains on the T8 Airport Line.

Upcoming work planned outside standard construction hours

In preparation for the arrival of the micro-tunnelling machine, the project team is required to carry out reinforcement work for the tunnel breakthrough.

The project team will then be utilising a large crane and other equipment to remove each section of the micro tunnelling machine. Each section of the machine will be removed and placed on a truck and delivered to our site at 200 O'Riordan Street.

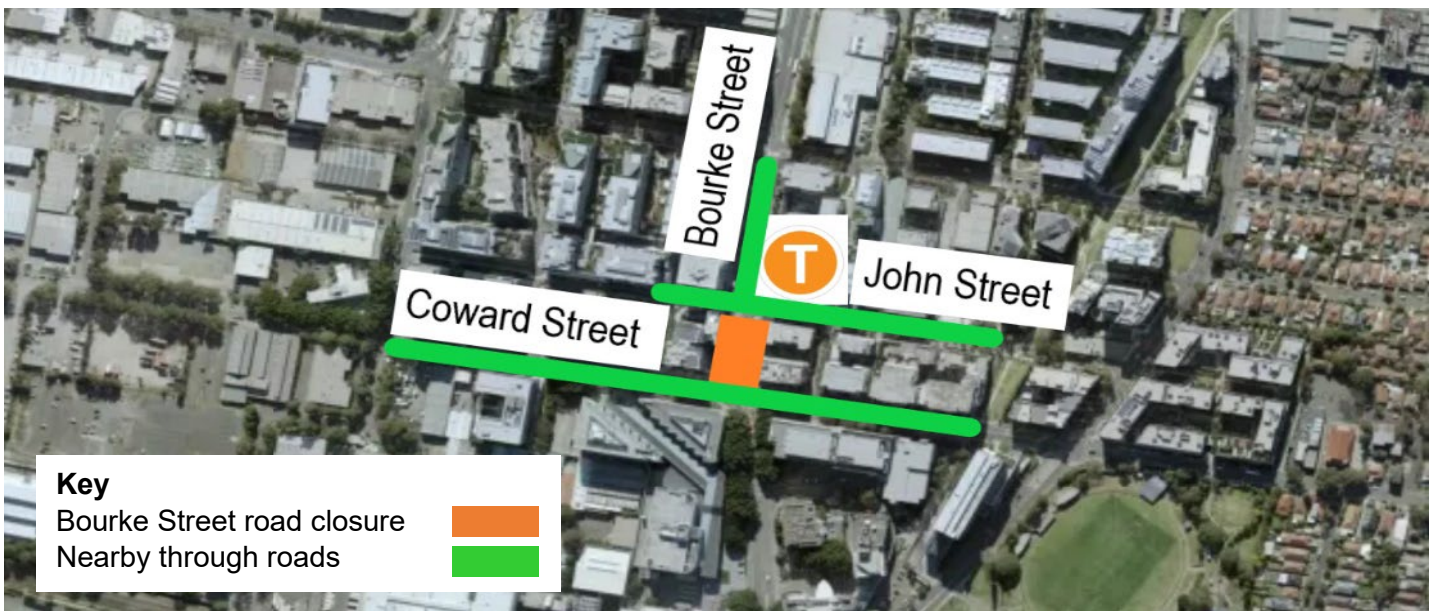
Due to road and safety regulations, the project team will need to work continuously from **6pm, Tuesday 30 November to 7am, Sunday 5 December** to remove the micro-tunnelling machine.

Upcoming road closure – 10pm Thursday 2 December to 3am Sunday 5 December

Due to the size of the crane required to remove the sections of the machine and the safety requirements of the removal, the project team will close Bourke Street **between Coward and John Streets** from **10pm, Thursday 2 December through to 3am, Sunday 5 December 2021**. Traffic control will be in place at the Bourke and John Street intersection during this time to assist motorists. We understand this may cause some minor delays in the area and apologise for this inconvenience.

Please follow the signage that will be in place and the traffic control instructions when you are near the retrieval shaft area. These procedures are in place to keep motorists and pedestrians in Mascot safe during the removal of the micro tunnelling machine.

For the latest traffic information, download the Live Traffic NSW app, visit www.livetraffic.com or call 132 701.



Where will work take place?

The above map shows the project work and road closure location (in orange) and through roads that will be accessible during the works in Mascot. The pedestrian detour of Laycock Street will remain unchanged during the road closure.

How do we consider the community?

The project team understands construction activities may cause disruption for the community and we will seek to minimise impacts as much as possible. We will put strategies in place to ensure strict adherence to environmental conditions.

We apologise for this inconvenience during this work and thank you for your patience whilst we complete this important work to enable more trains on the T8 Airport Train Line.

Contingency dates

This planned work outside standard construction hours at the retrieval shaft and the road closure is dependent on a number of factors including ground conditions, the progress of the micro tunnelling machine and weather. Should there be any change to the dates we will contact you directly with updated information.

Temporary bus stop changes

There will be a number of bus stop closures due to the temporary closure of Bourke St at Mascot between Coward and John Streets. Please follow the signage in place to the alternate bus stops and allow extra time for your journey. To plan your trip, please visit <https://transportnsw.info/trip>

Changes to the South East bus network

From Sunday 5 December 2021, Transport for NSW (Transport) will be making changes to the South East bus network. To plan your trip, please visit <https://transportnsw.info/trip>

Contact us

For more information or to subscribe for project updates:

 project information line: 1800 684 490

 24/7 construction response line: 1800 775 465

 projects@transport.nsw.gov.au

 www.transport.nsw.gov.au/mtms

Translation



If you require the services of an interpreter, please contact the Translating and Interpreting Service on **131 450** and ask them to contact Transport for NSW on **1800 684 490**.

An interpreter will assist you with translation.