

# More Trains, More Services

## Mascot Precinct Upgrade projects



### What is happening in Mascot?

Transport for NSW (TfNSW) is carrying out two upgrade projects in Mascot as part of the More Trains, More Services program.

The Mascot Station Access Upgrade project will build a new station entrance on the western side of Bourke Street, in the plaza opposite the existing station entrance. This will improve the flow of customers and reduce crowding in and around the station making travel easier and more comfortable for train and road users.

The Mascot Power Supply Upgrade project involves building a new substation at 166 O'Riordan Street, and an underground power supply cable route connecting the electrical substation to the train station on Bourke Street.

This upgrade will create the necessary power supply to support the increase in the number of trains travelling along the T8 Airport line in the future.

Standard construction hours on both projects are 7am to 6pm Monday to Friday and 8am to 1pm, Saturdays.

### About More Trains, More Services

Over the next ten years the More Trains, More Services program will simplify and modernise the rail network so that customers can expect more frequent train services, with less wait times, less crowding and more seats on a simpler, more reliable network.



## Mascot Station Access Upgrade

In March, the project team removed the vegetation, trees, plants and planter boxes as part of utility relocation works.

### What's planned for April?

Work will continue in April and includes:

- ongoing relocation of utilities, including water, sewer and electricity
- removal of kerbs, medians and vegetation on the eastern side of Bourke Street, between John Street and Church Avenue and laying new asphalt
- minor line marking on Bourke Street between John Street and Church Avenue
- installation of two new loading zone spots on Church Avenue.
- utility services searching around the Bourke Street and John Street intersection

Equipment to be used includes excavators, jackhammers, saw cutters, road saws, hydraulic drill, generator, trucks and powered hand tools.

### Where will the work take place?

The above map shows the location of the work being completed near Mascot Station. It also shows the creation of two loading zone spots on Church Avenue.

### What is planned next?

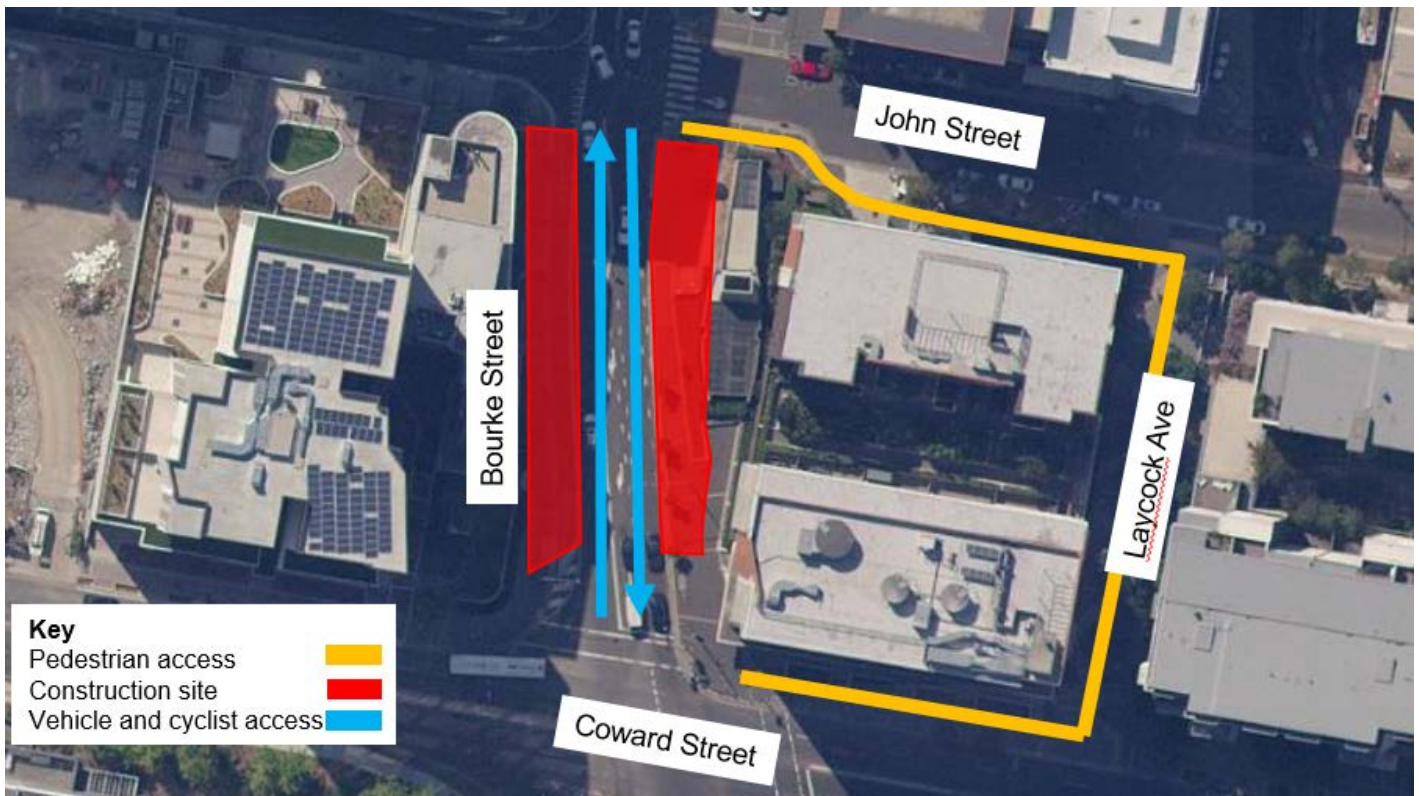
You can expect to see more changes to the Plaza in the coming weeks with hoardings beginning to be erected on site. We will implement our way-finding signage to assist pedestrians and cyclists get to where they want to go easily.

### Minimising disruption on our neighbours

Throughout February and March, the team have been working with local business owners to understand their needs and identify how we can minimise disruption during the construction phase of the projects. Our work will focus on wayfinding and promotion of local businesses on the hoardings. Keep a look out for our campaign in the coming months to inform locals that this area is still open for business.







## Mascot Power Supply Upgrade

During March, we carried out piling work and completed waste material removal at the substation site of 166 O’Riordan Street. We also started work on Bourke Street, carrying out utility investigations and modifications to the road alignment and medians between Coward and John streets.

To ensure the safety of pedestrians, a detour is in place on Bourke Street between Coward and John streets. Signage directing pedestrians to detour via Laycock Avenue has been erected. The above map shows this change.

### What’s planned next?

Work will continue in April and includes:

- piling work at the substation site at 166 O’Riordan Street and on the western side of Bourke Street
- completing modifications to the road alignment on Bourke Street between John and Coward streets
- installation of site sheds in the laydown area at 265 King Street.

### Where will the work take place?

The above map shows the location of work on Bourke Street between Coward and John streets. This work is required to receive the tunnel boring machine when the cable route construction is nearing completion. We will also continue work at 166 O’Riordan Street and 265 King Street, Mascot.

### Are there activities planned outside of standard work hours?

Some work will be completed outside of standard construction hours on Bourke Street between Coward and John streets. This work will occur 8pm to 6am on:

- Friday 9 April to Monday 11 April
- Friday 16 April to Monday 18 April

We will be contacting residents directly who may be impacted by this work.

Completion of this work is dependent on weather and site conditions and is subject to change.

## Changes for cyclists

Closure of the bike lane has progressively taken place during the last month. Feedback from cyclists indicated a preference for remaining on the road rather than being diverted. We've been working closely with Bayside Council to incorporate the changes and keep Bourke Street as a 40km zone. We will continue to focus on making sure signage is clear for cyclists in the area.

## Bus service changes and traffic detours

From 10pm, Friday 9 April to 5am Monday 12 April there will be a number of temporary changes to bus services, as a result of work being carried out on Bourke Street between Coward Street and John Street, Mascot.

These temporary changes will affect bus routes:

- 307 towards Mascot
- 307 towards Botany
- 357 towards Mascot
- 357 towards Bondi Junction Interchange
- 418 towards Kingsford.

Some parking will be removed as a result of the bus changes on Coward Street. Northbound buses will be temporarily relocated to 10 Bourke Road (outside the Qantas building). Bus signage will be in place to direct pedestrians to alternative bus stops during this time.

Check [www.transportnsw.info](http://www.transportnsw.info) for more information about these changes and which stops will be affected.

Detours for road users traveling within the Mascot area will also be in place during this time:

- road users will be detoured northbound on O'Riordan Street, and will need to turn left onto John Street
- road users will be detoured northbound on O'Riordan Street, and will need to turn left onto Bourke Road, left onto Coward Street, right onto Kent Road, and then right onto Gardeners Road.

Portable electronic signage boards will be set up to assist road users.

## How do we consider the community?

The project team understands construction activities may cause some disruption for the community. Every effort will be made to minimise impacts where possible such as traffic control and signage for vehicles and cyclists travelling near site locations. We will also ensure we adhere to strict environmental conditions relating to noise, vibration and dust management.

## Help us reduce paper waste?

We are always exploring the best ways to connect with the communities where we work while minimising impacts on the environment. To help us reduce paper waste, please visit [yoursay.transport.nsw.gov.au/mtms](http://yoursay.transport.nsw.gov.au/mtms) and click through to the project in your area to let us know if you would prefer to receive our updates to your inbox instead of your mailbox.

## Contact us

For more information or to subscribe for project updates:

 **project information line: 1800 684 490**

 **24/7 construction response line:  
1800 775 465**

 **[projects@transport.nsw.gov.au](mailto:projects@transport.nsw.gov.au)**

 **[www.transport.nsw.gov.au/mtms](http://www.transport.nsw.gov.au/mtms)**

## Translation



If you require the services of an interpreter, please contact the Translating and Interpreting Service on **131 450** and ask them to contact Transport for NSW on **1800 684 490**.

An interpreter will assist you with translation.