



Mascot Power Supply Upgrade

More Trains, More Services

April and May 2023



Transport for NSW acknowledges the Gweagal, Bidjigal and Gadigal Clans as the Traditional Custodians of the lands on which we work and pay respects to Elders past and present.

What work are we doing?

During April and May 2023, work will continue on the Mascot Power Supply Upgrade.

Work includes:

- continuing to fit out the substation and build the new facade around the substation boundary
- installing cables and other electrical infrastructure to connect power from the substation to the track at Mascot Station.

The map overleaf outlines the site access point.

When and where we'll be working

Standard construction hours are **7am to 6pm, Monday to Friday and 8am to 1pm on Saturdays.**

We'll be working within the substation site on 166 O'Riordan Street and the site compound on 200 O'Riordan Street.

The map overleaf outlines the locations of the substation and site compound.

Out-of-hours work

Some work will take place inside the T8 Airport Line tunnel and on Bourke Street near Mascot Station outside of standard construction hours **from 2am Saturday 1 April through to 2am Monday 3 April 2023.**

The sites at 166 and 200 O'Riordan Street will be used by the team for support activities associated with the work.

This out-of-hours work will take place during a scheduled Sydney Trains trackwork period when no trains will be running. Scheduling construction work outside of standard construction hours enables our project team to complete the activities safely.

Furthermore, to carry out the fit out of the substation at 166 O'Riordan Street, the project team will work from **7am to 6pm each Saturday until May 2023.** These out-of-hours works are expected to generate minimal noise.

All construction work is weather permitting and subject to change.

What will this mean for you?

You may notice:

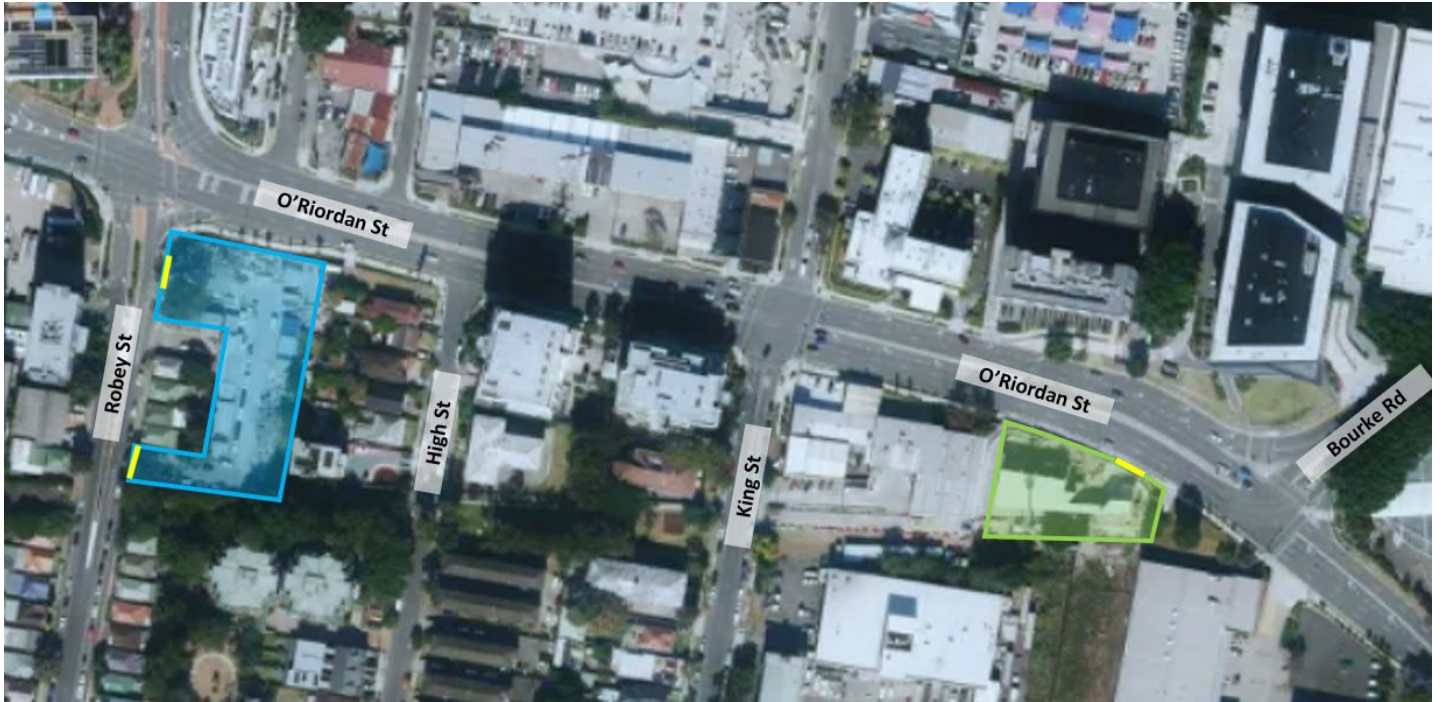
- workers and vehicles in and near the site compounds
- noise from machinery and equipment

Managing our impacts




We understand construction activities may cause disruption for the community. We will seek to minimise impacts as much as possible and adhere to strict environmental conditions relating to noise, vibration and dust management.



Location of work area



Map Key

-  Site compound/ laydown area
-  Substation
-  Site access points

Contact us



Project Infoline **1800 684 490**
24-hour Construction Response Line
1800 775 465



projects@transport.nsw.gov.au



yoursay.transport.nsw.gov.au/mtms



Interpreter service

For languages other than English call 131 450
Arabic • Cantonese • Hindi • Mandarin • Vietnamese
لطلب خدمة الترجمة الشفهية للغات غير الإنجليزية اتصل بالرقم
131 450

獲取英語以外的其他語言傳譯協助服務可以致電**131 450**
अंग्रेज़ी के अतिरिक्त अन्य भाषाओं के लिए दुभाषिया सेवा **131 450**
पर कॉल करें

獲取英語以外的其他語言口譯協助服務可以致電**131 450**
Để có dịch vụ thông ngôn cho các ngôn ngữ khác tiếng Anh,
gọi số **131 450**