



Work is progressing in Mascot

Transport for NSW is continuing construction within the Mascot precinct of the Mascot Station Upgrade and the Mascot Power Supply Upgrade as part of the More Trains, More Services program.

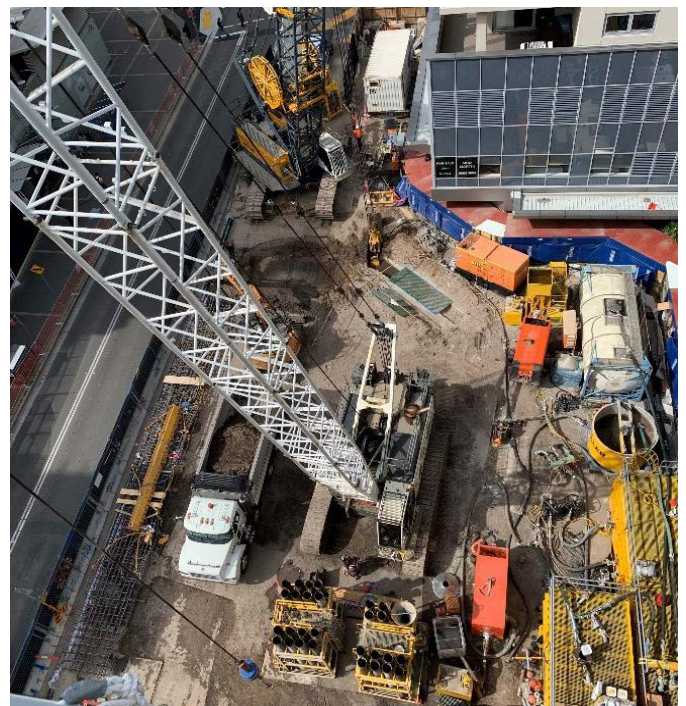
Last month there were a number of changes in and around Bourke, Coward, John and O’Riordan Streets in Mascot with works also commencing within Mascot station.

The hoarding was installed within Mascot Station and demolition works to the former office area took place in preparation for building the new toilet facilities.

Works are now complete on the underground retaining (diaphragm) wall that will support the future western entrance to the station.

The micro-tunnel boring machine (MTBM) was launched from 166 O’Riordan Street and during November has been travelling approximately 8 metres underneath Bourke Road making its way to the retrieval shaft site on Bourke Street between Coward and John Streets.

Work at the retrieval shaft on Bourke Street between John and Coward Streets has continued in readiness for the removal of the micro tunnelling machine on completion of tunnelling in early December.



Work progressing on the wall that will support the future western entrance to the station during November.

What's planned next?

Planned construction activities in **December and January** for the Mascot Power Supply Upgrade include:

- Retrieval of the micro-tunnel boring machine on Bourke Street between Coward and John Streets
- Continuing to build the substation at 166 O'Riordan Street (including concreting, drainage work, roofing, and structural steel construction)
- Crane demobilisation and removal at 166 O'Riordan Street
- Structural support installations at the retrieval shaft location on Bourke Street between Coward and John Streets.

Works planned for the Mascot Station Upgrade in **December** include:

- Installation of jet grout columns and seals
- Concrete works and earthworks within the site
- Mobilisation of plant and equipment for piling works to support the new western entrance
- Installation of dewatering apparatus
- Supply and install of the new partitions, ceiling and door frames for the new station toilets
- Completion of new toilet block
- Installation and connection of station systems for the new toilet block.

Works planned for the Mascot Station Upgrade in early **January** include:

- Demobilisation of piling equipment
- Earthworks within the compound
- Concrete works within the compound
- Installation of concrete beams
- Installation of gantry crane at street level
- Fit-out of new toilet block located within Mascot station.



Steel fixing at the future substation building at 166 O'Riordan Street, Mascot.



Work is progressing at the future substation site at 166 O'Riordan Street, Mascot.

Jet grouting work in December for the western station entrance

During December, jet grouting will take place as works progress on the new western station entrance.

Jet grouting is a construction process which comprises of the injection of cement grout under high pressure to mix in with the soil. This then forms a column or blanket of soil and cement grout mix which will be the supporting element used for future excavation.

The cement will be delivered to site by a bulk road tanker and pumped into a stationary storage silo within the site. The cement will then be transferred to the grout mixer as required to produce the quantity required for the shift. This process continues until all grouting is complete.

The equipment used to complete these activities includes an excavator, crane, bored pile rig, generator, tipper truck, saw cutter, trucks, non-destructive digging truck, concrete pump, compaction roller, core drills, powered hand tools.

Micro-tunnelling update

Our micro tunnelling machine is nearing the retrieval shaft and will shortly be removed

The micro-tunnelling machine is on its way approximately 8 metres underneath Bourke Road after recently completing the required cable tunnel for the power supply to the T8 Airport Line.

Once the machine is retrieved from our retrieval shaft on Bourke Street between Coward and John Streets, cabling will take place to connect the new substation at 166 O'Riordan Street to the T8 Airport Line tunnel where the retrieval shaft is located. This will generate the required power to supply more trains on the T8 Airport Line.



The micro tunnelling machine launch in early November from 200 O'Riordan Street, Mascot.



A view into the cable tunnel from the future substation site.

Upcoming road closure of Bourke Street between Coward and John Street from 10pm Thursday 2 December to 3am Sunday 5 December to remove the micro-tunnelling machine

Due to the size of the crane required to remove the sections of the machine and the safety requirements of the removal, the project team needs to close Bourke Street **between Coward and John Streets from 10pm, Thursday 2 December through to 3am, Sunday 5 December 2021**. Traffic control will be in place at the Bourke and John Street intersection. We understand this may cause some minor delays in the area and apologise for this inconvenience.

Please follow the signage that will be in place and the traffic control instructions when you are near the retrieval shaft area. These procedures are in place to keep motorists and pedestrians in Mascot safe during the removal of the micro tunnelling machine. For the latest traffic information, download the Live Traffic NSW app, visit www.livetraffic.com or call 132 701.

To support the construction industry through the COVID-19 pandemic, the NSW Government has extended an amendment to the legislation regarding standard construction hours. This amendment enables activities to be carried out between 7am and 6pm Monday to Sunday and public holidays.

Temporary bus stop changes

There will be a number of bus stop closures due to the temporary closure of Bourke Street at Mascot between Coward and John Streets between 10pm Thursday 2 December and 3am Sunday 5 December. Please follow the signage in place to the alternate bus stops and allow extra time for your journey. To plan your trip, please visit <https://transportnsw.info/trip>

Changes to the South East bus network

From Sunday 5 December 2021, Transport for NSW (Transport) will be making changes to the South East bus network. To plan your trip, please visit <https://transportnsw.info/trip>

Upcoming out of hours work

Station upgrade work

Throughout December there will be a number of occasions when the project will require delivery and removal of oversized equipment for the bored piling work and removal of equipment from the diaphragm wall works. The dates for these will be notified for in advance. On occasion during December there will be out of hours work inside the station within the hoarding area. There will be no noise impacts associated with these works. **These deliveries and removals will occur between 1am and 6am.**

Retrieval shaft site - removal of the micro tunnelling machine

The project team will be utilising a large crane and other equipment to remove each section of the micro tunnelling machine. Each section of the machine will be removed and placed on a truck and delivered to our site at 200 O'Riordan Street.

Due to road and safety regulations, the project team will need to work continuously from **6pm, Tuesday 30 November to 7am, Sunday 5 December** to remove the micro-tunnelling machine.

We understand that this work will generate noise for the area and we have been in contact with directly impacted residents.

Completion of all work is dependent on a number of factors including workforce availability due to the current Covid19 NSW Health guidelines, weather and site conditions and is subject to change we'll keep our website, www.transport.nsw.gov.au/mtms-mascot updated with the dates the work will be carried out.

Christmas closedown

Mascot Station upgrade

The Station upgrade team will be taking a break over the Christmas period, with a shutdown occurring from the 24 December 2021 through to the 3 January 2022. There will be no works during this period.

Mascot Power Supply upgrade

The Mascot Power Supply team will finish work at our sites at 166 O'Riordan Street, 200 O'Riordan Street and on Bourke Road near John Street on Friday 17 December and will resume work on Monday 10 January 2022.

Thank you for your patience during the works throughout 2021 and we wish you and your family all the best over the holiday season.

Shop local at Mascot

Transport for NSW encourages you to support local businesses during the holiday period. It's time to celebrate and the following local businesses are close by for your convenience - the following cafes and restaurants are open and accessible via the footpath along Bourke Street.



Taisho Japanese Restaurant

Shop 6/8 Bourke St, Mascot (02) 8668 4961

Teaser

Shop 10/8 Bourke St, Mascot 0468 998 802

Coffee Club

Shop 4/8 Bourke St, Mascot (02) 8959 4172

Domino's

Shop 9/8 Bourke St, Mascot (02) 8339 3420

Mr Lei

Shop 7/8 Bourke St, Mascot (02) 8339 4744

Mr Nam

Shop 1/8 Bourke St, Mascot (02) 8386 5748

Northeastern Family Chinese Restaurant

Shop 2/8 Bourke St, Mascot (02) 8060 6815

Spice Thai Cuisine

Shop 3/8 Bourke St, Mascot (02) 8339 4838

Looking for delivery options?

Restaurants and cafes along Bourke Street, Mascot are affiliated with Deliveroo, Doordash, Eatapp.online, Hey You, Menulog and UberEats.



Contact us

For more information or to subscribe for project updates:



Project information line: **1800 684 490**



24/7 construction response line: **1800 775 465**



projects@transport.nsw.gov.au



www.transport.nsw.gov.au/mtms

Translation



If you require the services of an interpreter, please contact the Translating and Interpreting Service on **131 450** and ask them to contact Transport for NSW on **1800 684 490**.

An interpreter will assist you with translation.