



# More Trains, More Services

Mascot Precinct Upgrade projects

## What is happening in Mascot?

Transport for NSW (TfNSW) is carrying out two upgrade projects in Mascot as part of the More Trains, More Services program.

The Mascot Station Access Upgrade project will build a new station entrance on the western side of Bourke Street, in the plaza opposite the existing station entrance.

The Mascot Power Supply Upgrade project involves building a new substation at 166 O'Riordan Street, and an underground power supply cable route connecting the electrical substation to the train station on Bourke Street.

You can expect to see more changes in Mascot in the coming weeks with fencing and hoardings beginning to be erected, and some new detours being put into place to assist pedestrians get to where they want to go safely.

## Changes to construction hours

To support the construction industry through Coronavirus, the NSW Government have extended an amendment to the legislation regarding standard construction hours. This amendment enables activities across all our Mascot sites to be carried out between 7am and 6pm on weekdays, weekends and public holidays.

## Are activities planned outside of these standard work hours?

We have scheduled some work to be completed outside of standard construction hours during May. This work needs to be completed at night to ensure safety of pedestrians, construction workers and to minimise the impact to traffic.

We will be working up to eight night shifts, between 6pm and 7am, on:

- Wednesday 5 May and Thursday 6 May
- Wednesday 12 May and Thursday 13 May
- Wednesday 19 May and Thursday 20 May
- Wednesday 26 May and Thursday 27 May

This work may be noisy at times. We will be contacting residents directly who may be impacted.

We will also be completing work between 8pm to 6am on:

- Monday 3 Tuesday 4 and Friday 7 May

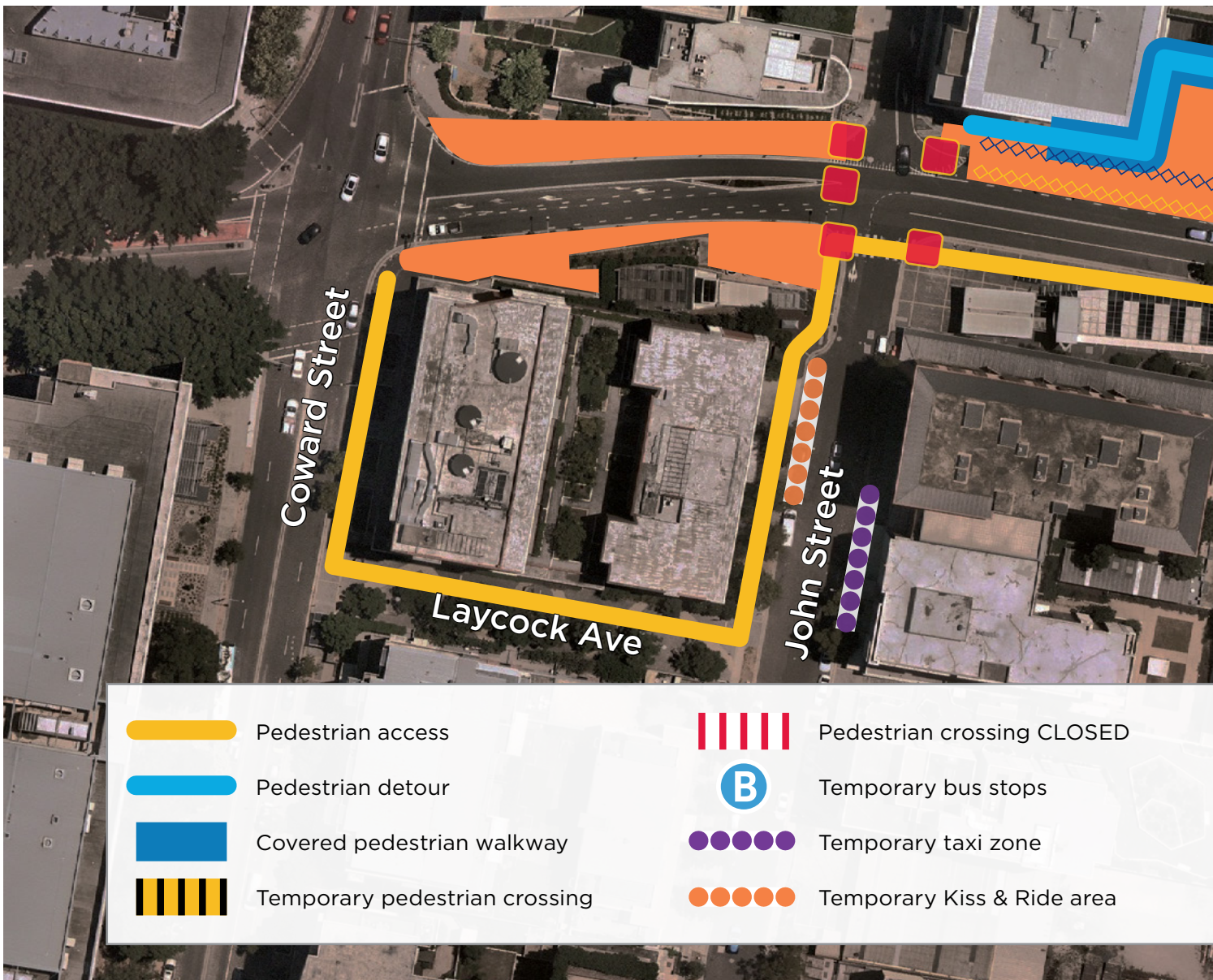
This work is not expected to be noisy.

Completion of our night work is dependent on weather and site conditions and is subject to change.

The project team understands construction activities may cause some disruption for the community. Every effort will be made to minimise impacts where possible such as traffic control and signage for vehicles and cyclists travelling near site locations. We will also ensure we adhere to strict environmental conditions relating to noise, vibration and dust management.

## Where will the work take place?

The map overleaf shows the location of the work being completed in Mascot, and includes information about upcoming pedestrian changes and where we will be establishing our compounds. It also shows the creation of two loading zone spots on Church Avenue.



## Mascot Station Access Upgrade

In April, the project team continued working on the relocation of utilities, including water, sewer and electricity. We removed kerbs, medians and vegetation on the eastern side of Bourke Street, and began laying new asphalt between John Street and Church Avenue.

## What's planned next?

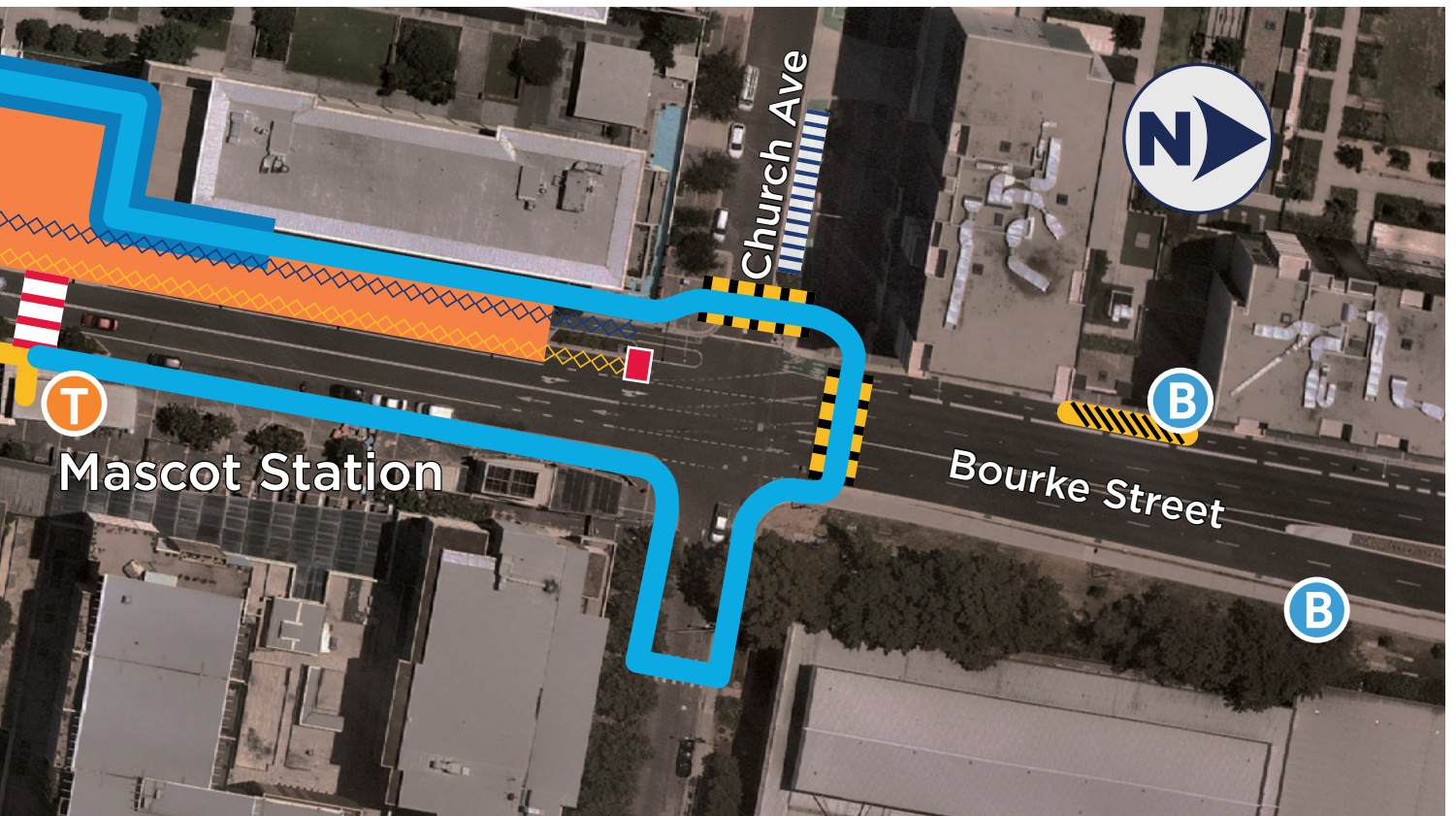
Our project team will be busy in May, completing the following activities:




- temporarily removing the pedestrian crossing on Bourke Street, in front of the train station
- installing new temporary pedestrian crossing across Bourke Street, north of Church Avenue
- installing two new loading zone spots on Church Avenue

- continuing the removal of kerb and vegetation on the eastern side of Bourke Street, between John Street and Church Avenue
- ongoing relocation of utilities, including water, sewer and electricity, and locating existing services on Bourke Street
- constructing the new site compound, with fencing and hoarding around the site
- relocating bus stops on Bourke Street
- removing cycleway kerbs
- line marking and installing signage for taxi bays and kiss and ride zones on John Street.

Equipment to be used for these activities includes an elevated work platform, electrical chainsaws, lighting towers, powered hand tools and construction vehicles.





- |  |                                 |   |                             |
|--|---------------------------------|---|-----------------------------|
|   | Temporary loading zone          |   | Median strip & kerb removal |
|  | Construction zone/site compound |  | Bicycle lane CLOSED         |
|  | Vehicle exit to site compound   |  | Parking/merge lane CLOSED   |
|  | Utility excavation              |   |                             |

### Constructing a new site compound

From Wednesday 12 May, we will begin setting up our site compound and construction site on Bourke Street. This work is expected to take around one week, and will be in place until the end of the project (expected late 2022).

Solid fencing and hoarding will surround the construction site and pedestrian access through the plaza will be changed. Pedestrians will need to follow the detour route, through the covered hoardings in the plaza.

### Pedestrian access changes

From Thursday 13 May, the pedestrian crossing on Bourke Street will be closed until the end of the project.

As a temporary measure, pedestrians are asked to follow the detour routes as outlined on the above map to ensure their safety.

By July, subject to approval, we will install a signalised crossing at the intersection of John Street and Bourke Street to shorten this detour until the completion of the project.

Access to all shops including those on Etherden Walk will be maintained at all times. Pedestrians will need to follow the detour route around the hoardings in the plaza.

We apologise for any inconvenience and thank you for your patience.

## Traffic changes

From Thursday 13 May, the parking lane on the eastern and western side of Bourke Street between John Street and Church Avenue will be closed. These lane closures will be in place until the end of the project (expected late 2022).

A temporary kiss and ride area and taxi zone will be installed on John Street, as shown on the map. We will also be temporarily moving bus stops located on Bourke Street, to north of Church Avenue on Sunday 9 May.

The bicycle lane between John Street and Church Avenue remains closed until the end of the project.

Please follow the direction of traffic controllers and signage around the project, and allow additional travel time.

## Mascot Power Supply Upgrade

During April, we installed site sheds at the substation site of 166 O’Riordan Street. We also completed modifications to the road alignment and medians on Bourke Street between Coward and John streets.

To ensure the safety of pedestrians, a detour is in place on Bourke Street between Coward and John streets. Signage directing pedestrians to detour via Laycock Avenue has been erected. The map overleaf shows this change. We thank you for your patience whilst these changes take place. We will continue to look for opportunities to minimise impacts on pedestrians where possible.

## What’s planned next?

Construction activities continue in May and include:

- piling and concrete work at the substation site at 166 O’Riordan Street
- enabling work including drainage and services investigation work to prepare for piling work on the western side of Bourke Street
- installation of road work including asphaltting, line marking and survey marker installation on Bourke Street and O’Riordan Street
- delivery of oversized rail infrastructure will occur with traffic control in place where necessary.

## Mascot is open for business

Throughout construction, our team will continue to work with local business owners to understand their needs and identify how we can minimise disruption during the construction phase of the projects. We will use our hoardings to promote these businesses. Keep a look out for our campaign in the coming months to inform locals that this area is still open for business.

### Contact us

For more information or to subscribe for project updates:



Project information line: **1800 684 490**



**24/7** construction response line:  
**1800 775 465**



[projects@transport.nsw.gov.au](mailto:projects@transport.nsw.gov.au)



[www.transport.nsw.gov.au/mtms](http://www.transport.nsw.gov.au/mtms)

### Translation



If you require the services of an interpreter, please contact the Translating and Interpreting Service on **131 450** and ask them to contact Transport for NSW on **1800 684 490**.

An interpreter will assist you with translation.