

More Trains, More Services

Mascot Power Supply Upgrade project



What happened in October?

During October, we continued with geotechnical, utility and survey investigations in the area to help inform the detailed design for the project.

What's planned next?

Throughout November, we will continue geotechnical, utility and survey investigations.

The project team will also begin the site set up and mobilisation of equipment at 166 and 200 O'Riordan Street, Mascot to start site based construction activities.

How do we consider the community?

Standard construction hours on this project are **7am to 6pm** Monday to Friday, weekends and public holidays. We are committed to keeping the community well informed of our construction activities and being a good neighbour. The project team understands construction activities may cause disruption for the community.

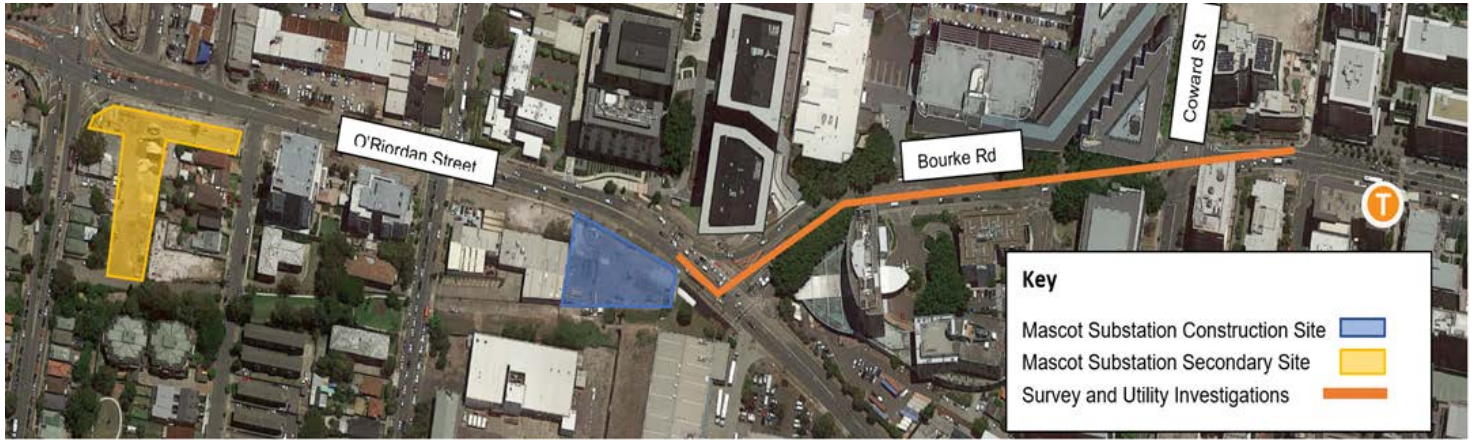
Every effort will be made to minimise impacts where possible such as traffic control and signage for vehicles and cyclists travelling near site investigation locations. We will also ensure we adhere to strict environmental conditions relating to noise, vibration and dust management.

Are there activities planned out of hours?

Some out of hours work may be required to complete the site investigations. The community will be notified seven days in advance of night work being carried out. Night work would proceed depending on weather and site conditions, and is subject to change.

How are we staying safe?

We continue to deliver projects across NSW while ensuring the safety of all staff and the community. In line with current Australian Government guidelines around slowing the spread of Coronavirus and social distancing, all work will be carried out at a safe physical distance where possible and necessary hygiene practices will be observed.



Where will work take place?

The above map shows the project area from 166 O'Riordan Street, along Bourke Road and Bourke Street where investigation activities will take place.

What else in happening in Mascot?

Mascot Station Access Upgrade – have your say

Transport for NSW is proposing to create a new station entrance on the western side of Bourke Street at Mascot. This will improve the flow of customers and reduce crowding in and around the station making travel easier and more comfortable for train and road users. A Review of Environmental Factors is open for comment from Friday 23 October to Friday 6 November 2020. Please visit <https://yoursay.transport.nsw.gov.au/mascot-station-upgrade> for more information.

Airport North Precinct – Completed October 2020

Transport for NSW have completed upgrading the roads north of the airport, widening O'Riordan Street to three lanes in each direction between Bourke Road and Robey Street. The project has been completed ahead of schedule, allowing local businesses and the community enjoy the benefits of the new roadway and shared pedestrian paths. The project is the final piece of the puzzle for the Airport Precinct, improving congestion and travel times around Port Botany and the Airport.

About More Trains, More Services

Over the next ten years the More Trains, More Services program will simplify and modernise the rail network so that customers can expect more frequent train services, with less wait times, less crowding and more seats on a simpler, more reliable network.

Contact us

For more information or to subscribe for project updates:

 project information line: 1800 684 490

 24/7 construction response line:
1800 775 465

 projects@transport.nsw.gov.au

 www.transport.nsw.gov.au/mtms

Translation



If you require the services of an interpreter, please contact the Translating and Interpreting Service on 131 450 and ask them to contact Transport for NSW on (02) 9200 0200.

An interpreter will assist you with translation.