

More Trains, More Services

Mascot Precinct Upgrade projects



Work is progressing in Mascot

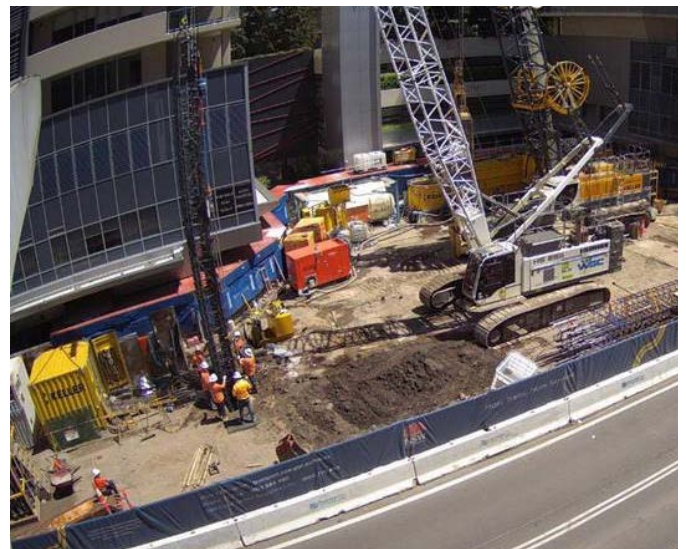
Transport for NSW (TfNSW) is continuing construction within the Mascot precinct of the Mascot Station Upgrade and the Mascot Power Supply Upgrade as part of the More Trains, More Services program.

Last month there were a number of changes in and around Bourke, Coward, John and O’Riordan Streets in Mascot. These included ongoing relocation of services, roadworks and electrical works and installation of the new temporary traffic signals which are now operational at the intersection of Bourke and John Streets.

Works are well underway on the underground retaining (diaphragm) wall that will support the future western entrance to the station.

The southern building of the future substation at 166 O’Riordan Street is starting to take shape.

Work at the retrieval shaft on Bourke Street between John and Coward Streets has also progressed in preparation for the removal of the micro tunnelling machine on completion of tunnelling in December.



Work progressing on the wall that will support the future western entrance to the station.

What’s planned next?

Mascot Power Supply Upgrade

Planned construction activities in November include:

- Continuing to build the future substation at 166 O’Riordan Street (including concreting, electrical work, and structural steel construction).

- Excavation and set up work at 166 O’Riordan Street in preparation for the commencement of tunnelling in early November.
- Concreting, removing ground water, and excavation on the western side of Bourke Street to enable the retrieval of the micro-tunnelling machine on completion of work in December.

Mascot Station Upgrade

- Commissioning new electrical supply in John Street (West).
- Continued diaphragm wall installation at Mascot Station.
- Demobilisation of large cranes and equipment.
- Mobilisation of plant and equipment for structural concreting works to support the future western entrance at Mascot Station.
- Installation of hoarding and demolition of an office area within Mascot Station to prepare for construction of new station toilets.
- Relocation of existing station systems to enable construction of a new toilet block within the station.

When will work take place?

To support the construction industry through the COVID-19 pandemic, the NSW Government has extended an amendment to the legislation regarding standard construction hours. This amendment enables activities to be carried out between 7am and 6pm Monday to Sunday and public holidays.



The large 280 tonne crane currently working at the future substation site.

Upcoming out of hours works

Station upgrade work

Throughout early November there will be early morning deliveries of equipment for the diaphragm/ retaining wall work. Deliveries will enter via John Street at 4am and will be unloaded after 7am.

On occasion during November there will also be out of hours work inside the station within a hoarded off area. There will be no noise impacts associated with these works.

To facilitate the construction of the new station toilets, there will be out of hours work occurring within the station during the Sydney Trains trackwork weekend in November. These works will take place between **6am Saturday 20 November to 6pm Sunday 21 November**.

Retrieval shaft - corner of Bourke Road and Coward Street

As part of our power upgrades within the T8 Airport Line tunnel we will be accessing our compound on the eastern side of Bourke Road between John and Coward streets as well as accessing via Mascot Station outside of standard construction hours from **6pm to 6am between Monday 15 November and Sunday 21 November**. We do not expect this work to be noisy.

Future substation site - 166 O’Riordan Street

As part of our works at 166 O’Riordan Street we need to undertake some steel fixing work out of standard construction hours between 6pm and 7am in preparation for a number of concrete pours during November. Additionally, while majority of these concrete pours will be undertaken during standard construction hours, finishing work may need to be undertaken out of hours throughout November.

Tunnelling work

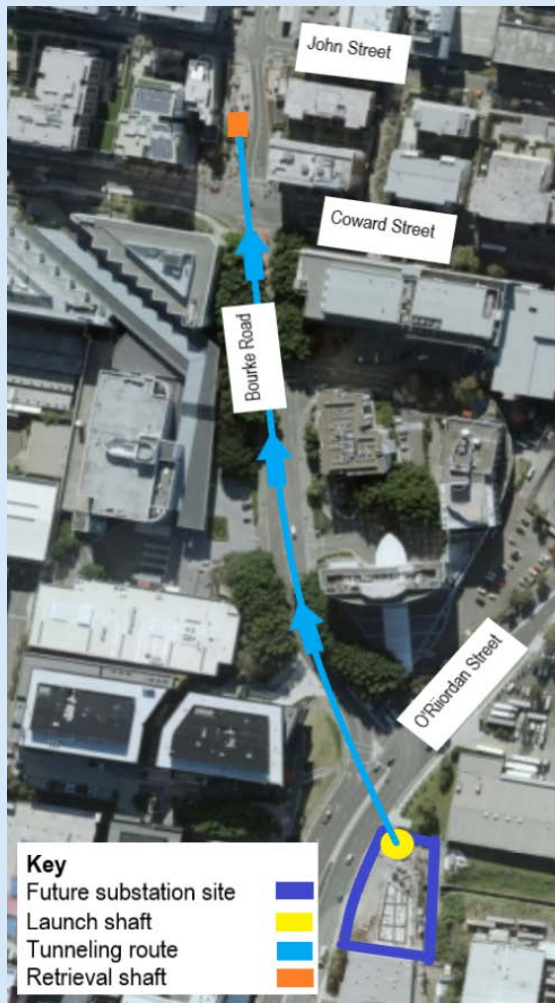
Once the micro-tunnel boring machine is launched in early November it will operate 24/7 until it completes its journey in early December. We don’t expect this work to be noisy, and every effort will be made to minimise disruption to the community.

Completion of all work is dependent on a number of factors including workforce availability due to the current Covid19 NSW Health guidelines, weather and site conditions and is subject to change. We’ll keep our website, www.transport.nsw.gov.au/mtms-mascot updated with the dates the work will be carried out.

Aunty Recheal, Mascot's micro-tunnel boring machine



View from inside the launch shaft for the micro tunnelling machine at 166 O'Riordan Street.



Map showing the underground tunnelling route

Why is the Mascot Power Supply Upgrade Project using a micro tunnel boring machine?

A micro-tunnel boring machine (MTBM) is being utilised to create the necessary underground pathway for new cables. These cables will connect the new substation being built at 166 O'Riordan Street to the T8 Airport Line Tunnel under Bourke Street between Coward and John Streets.

Where are we tunnelling?

The MTBM is driven from the surface at 166 O'Riordan Street to excavate a tunnel and bore underneath Bourke Road between the launch site at 166 O'Riordan Street and the retrieval site at Bourke Road between Coward and John Streets.

When and how will we be tunneling?

From early November, the project team will begin utilising a tunnel boring machine with a width of 3 metres to excavate and bore the tunnel approximately 8 metres below Bourke Road.

Whilst undertaking the tunnelling, the project team will be carrying out the fit-out of the tunnel. The fit-out process will include power, ventilation, and service utilities to enable safe cable placement in the tunnel.

What are the benefits of tunnelling?

The project team are using a tunnel boring machine to ensure a controlled excavation of the underground material and to stabilize the ground. Tunnelling will provide less disruption to the community compared to other methods such as trenching which often requires prolonged road closures.

How will we retrieve the tunnel boring machine?

Approximately four weeks after beginning excavation at 166 O'Riordan Street, the tunnel boring machine will reach the retrieval shaft site on Bourke Street between Coward and John Streets.

The project team will close this section of Bourke Street for three nights to remove the tunnel boring machine with a crane. Detours and signage will be in place to guide motorists around Bourke Street.

We understand that this work will generate noise and require traffic detours for the area and will directly contact impacted residents and businesses prior to the retrieval of the tunnel boring machine.

Where will the work take place?

The map shows the tunnel boring machine route from the new substation location at 166 O'Riordan Street to the retrieval shaft site on Bourke Street between Coward and John Streets.

Completing the journey: Removing Mascot's micro-tunnel boring machine in December

Once the micro-tunnel boring machine has reached the retrieval location in the shaft currently under construction on the western side of Bourke Road between Coward and John streets, it needs to be removed. To do this the project team will close this section of Bourke Street for three nights over from a Friday to early Monday in early December and bring in a large 500 tonne mobile crane to remove the micro-tunnel boring machine in sections.

Detours and signage will be in place to guide motorists around Bourke Street.

We understand that this work will generate noise and inconvenience in the area and we will provide further details to the community and potentially impacted residents well in advance of this work.



Looking into our tunnelling retrieval shaft on Bourke Road.

Shop local at Mascot

Transport for NSW encourages you to support local businesses during the construction of the Mascot Station Upgrade.

A local business guide is inserted into this notification. **#ShopLocalMascot** is an initiative to support your community and connect you to local businesses. Don't forget to shop, snap and share your pics.



About More Trains, More Services

Over the next ten years the More Trains, More Services program will simplify and modernise the rail network so that customers can expect more frequent trains services, with less wait times, less crowding and more seats on a simpler, more reliable network.

Contact us

For more information or to subscribe for project updates:

📞 Project information line: **1800 684 490**

📞 24/7 construction response line: **1800 775 465**

@ projects@transport.nsw.gov.au

🖱️ www.transport.nsw.gov.au/mtms

Translation



If you require the services of an interpreter, please contact the Translating and Interpreting Service on **131 450** and ask them to contact Transport for NSW on **1800 684 490**.

An interpreter will assist you with translation.